

# RECALIBRATING THE ROHINGYA RESPONSE

## 2025-26 JOINT RESPONSE PLAN ROHINGYA HUMANITARIAN CRISIS



SNAPSHOT OF THE SECOND YEAR OF THE PLAN

### KEY FIGURES: JANUARY-DECEMBER 2026

**1.89M** PEOPLE IN NEED

51.2% Women & Girls 48.8% Men & Boys

Host communities  
**640K**



Rohingya refugees/FDMNs  
**1.25M**

**1.56M** PEOPLE TARGETED

51.3% Women & Girls 48.7% Men & Boys

Host communities  
**307K**



Rohingya refugees/FDMNs\*  
**1.25M**

\*Forcibly Displaced Myanmar Nationals

**USD 710.5M** TOTAL NEEDS FOR 2026

**USD 674.3M**

Rohingya Refugees/  
FDMN

**USD 36.2M**

Bangladeshi Host  
Community



**143**  
PROJECTS

**11**  
UN agencies

**52**  
Bangladeshi NGOs

**98**  
UNIQUE  
PARTNERS\*

**28**  
International NGOs

**7**  
Other national  
and international  
organizations

Photo@WFP/2025

\*This includes 52 appealing partners and 73 implementing partners (of the appealing partners, 22 are implementing activities under other projects).

**USD 710.5M**

Total Funding Needs

(Cox's Bazar and Bhasan Char)

Resilience  
& Solutions  
Funding Needs

**68.1M**

1st Priority  
Funding Needs

**495.3M**



**31.7M**

3rd Priority  
Funding Needs

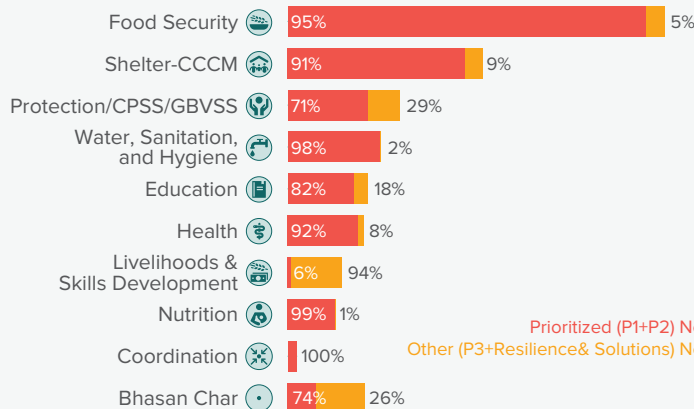
**115.4M**

2nd Priority  
Funding Needs

**USD 610.7M**

Prioritized (P1+P2) Funding Needs

(Cox's Bazar and Bhasan Char)



Prioritized (P1+P2) Needs  
 Other (P3+Resilience & Solutions) Needs

### Strategic Objective 1

Work towards the early, voluntary, and sustainable repatriation of Rohingya refugees/FDMNs to Myanmar.

### Strategic Objective 2

Strengthen the protection and resilience of Rohingya refugee/FDMN women, men, girls, and boys.

### Strategic Objective 3

Deliver life-saving assistance to populations in need.

### Strategic Objective 4

Foster the well-being of host communities.

### Strategic Objective 5

Strengthen disaster risk management and combat the effects of climate change.

# SNAPSHOT OF THE SECOND YEAR OF THE PLAN: JANUARY-DECEMBER 2026

## POPULATION TARGETED IN 2026: ROHINGYA REFUGEES/ FDMNs AND HOST COMMUNITY IN COX'S BAZAR



**1,220,209**

**51.8%** Women & Girls **48.2%** Men & Boys



**307,152**

**50.6%** Women & Girls **49.4%** Men & Boys

**631,183** Children (<18 yrs)  
311,336 girls  
320,847 boys

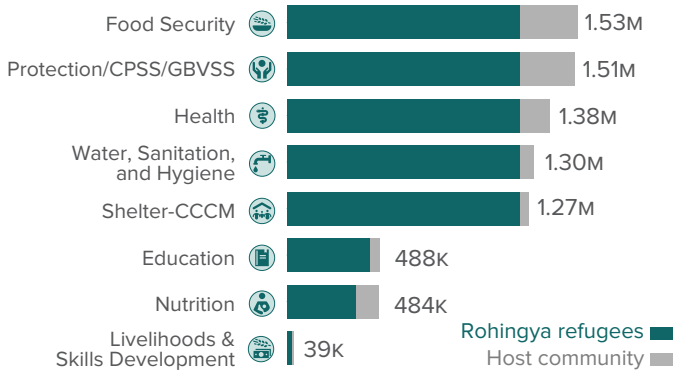
**533,566** Adults (18-59 yrs)  
293,479 women  
240,087 men

**54,460** Elderly (60+ yrs)  
24,292 women  
30,168 men

**135,299** Children (<18 yrs)  
69,788 girls  
65,511 boys

**156,266** Adults (18-59 yrs)  
77,824 women  
78,442 men

**15,587** Elderly (60+ yrs)  
7,759 women  
7,828 men



## POPULATION TARGETED IN 2026: ROHINGYA REFUGEES/ FDMNs ON BHASAN CHAR\*



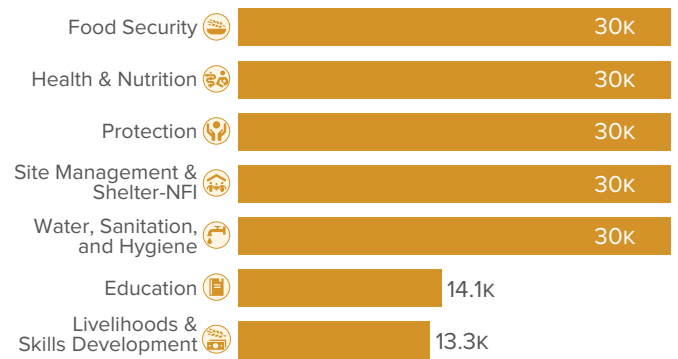
**30,000\*\***

**51.6%** Women & Girls **48.4%** Men & Boys

**15,543** Children (<18 yrs)  
7,655 girls  
7,888 boys

**13,118** Adults (18-59 yrs)  
7,215 women  
5,903 men

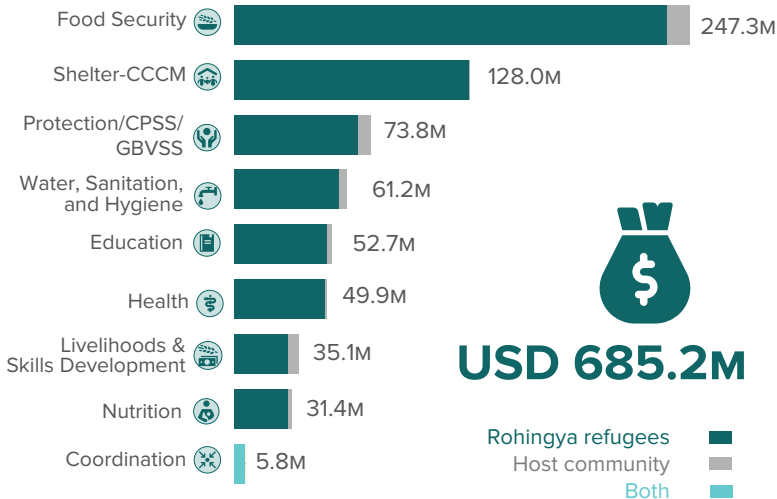
**1,339** Elderly (60+ yrs)  
597 women  
742 men



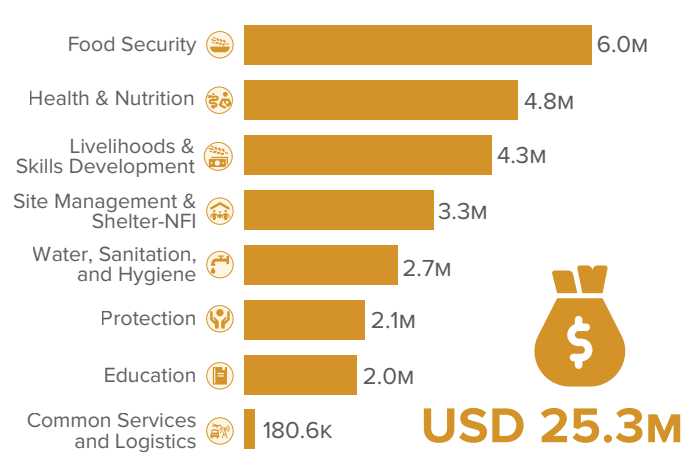
## 2026 JOINT RESPONSE PLAN APPEALING PARTNERS

ACF, ACTED, ActionAid, AMAN, BDRCS, BRAC, CARE, Caritas, CBMG, CWW, DRC, Educo, FAO, FIVDB, Friendship, GUSS, HEKS, HI, Hope, ILO, IMPACT, IOM, IRC, IRW, MG, MI, Mukti, NGOF, NRC, OBAT, Oxfam, Plan, Prantic, Protyashi, QC, RDRS, SAWAB, SCI, TdH, Tearfund, UN Women, UNDP, UNFPA, UNHCR, UNICEF, UNOPS, WFP, WHH, WHO, WVI, YPSA

## TOTAL NEEDS FOR 2026: COX'S BAZAR



## TOTAL NEEDS FOR 2026: BHASAN CHAR



\* The Bhasan Char Response is led by the Government of Bangladesh, with the support of UNHCR on behalf of the broader humanitarian community. In 2026, efforts to promote streamlined coordination between Cox's Bazar and Bhasan Char are underway.

\*\* This JRP is appealing to support 30,000 Rohingya refugees/FDMNs on the island. Adjustments to the appeal will be made, if required, based on the actual number of Rohingya refugees/ FDMNs on Bhasan Char.