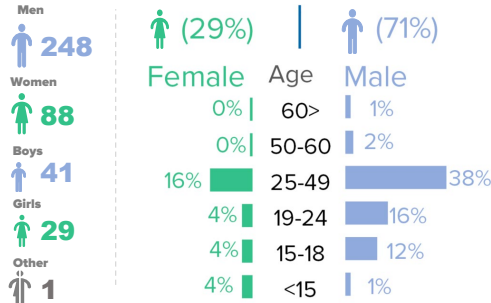


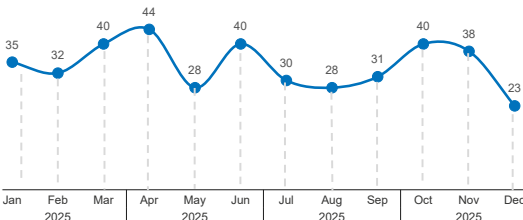
# 407

Total victims of trafficking identified

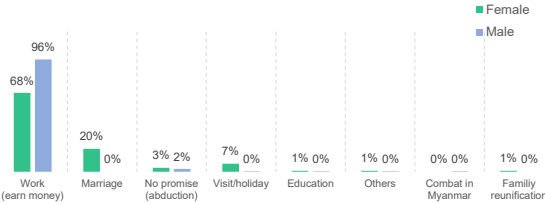


Lower numbers of detected child cases may indicate under-reporting due to lack of awareness about child trafficking in the community, or care-givers being perpetrators of trafficking.

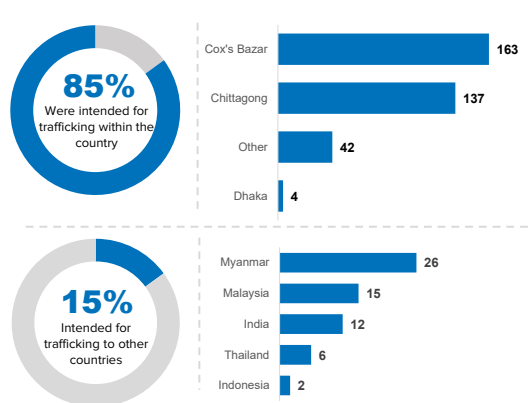
## Monthly trend of identification of trafficking victims



## Promise During Recruitment



## Intended Destination of Trafficking Victim



## Context

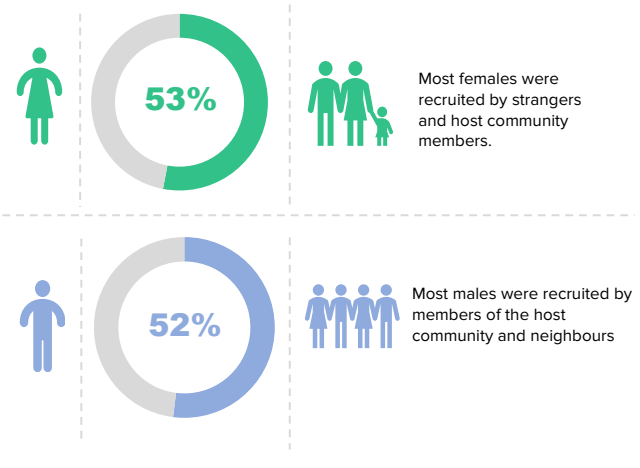
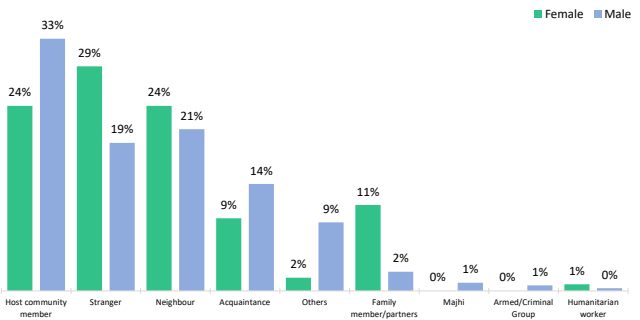
The data in this dashboard is based solely on information collected by ATWG members during service provision. It reflects only those individuals who have undergone a full assessment against global trafficking indicators in the context of seeking services. As such, it does not capture the broader population affected by trafficking and is likely a significant undercount. Underreporting is also influenced by factors such as fear of retaliation, stigma, and the potential dangers associated with disclosing trafficking experiences, including fear of retaliation by perpetrators.

In 2025, ATWG partners identified **407 trafficking cases**, mostly involving labour exploitation. Adult men comprised the majority, while women made up 22% and children 17%, underscoring significant child protection needs. Most victims were aged 25-49, followed by youth and children. Underreporting remains substantial due to stigma, fear of retaliation, mistrust of authorities, and limited awareness of reporting channels. Exploitation occurred mainly in **agriculture, construction, factories, and domestic work**, with forced sex work also reported. Land based internal trafficking dominated, with **most victims exploited within Bangladesh** rather than abroad.

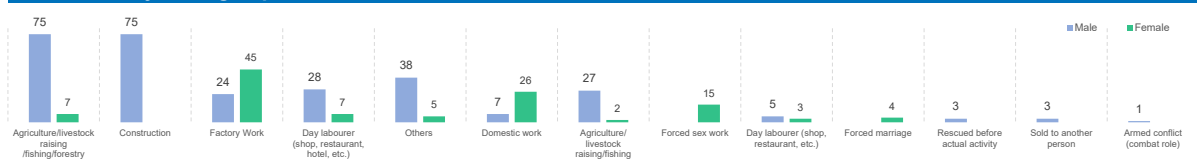
Compared to the previous year, the number of trafficking cases rose in 2025 by 28%, marking increases across all demographic groups. The number of child victims increased by 61%, indicating expanding risks for minors. The ratio of female victims (women and girls) remained the same around 29% both in 2024 and 2025.

These statistics may be subject to change as new information becomes available.

## Recruiter



## Actual Activity During Exploitation



Between January and December 2025, ATWG members screened a total of 36 individuals (28 male and 8 female) who were identified not to be victims of trafficking. All cases involved individuals lured by fraudulent job opportunities. Nineteen individuals were reportedly intended for Malaysia, one case for India, one for Thailand, and two for Myanmar, while the remaining cases involved attempted internal movement within Bangladesh.