

Government of the People's Republic of Bangladesh  
**Office of the Refugee Relief and Repatriation Commissioner**  
Cox's Bazar  
[www.rrrc.gov.bd](http://www.rrrc.gov.bd)

No: 51.04.2200.005.00.032.24- **3333**

Date: **15** September 2025

Sub: **Approval of Shelter Models under GoB-Approved TSS Application**

Ref: ISCG's letter no.-(1) ISCG/2025/46, date: 17 August 2025  
(2) ISCG/2025/40, date: 17 July 2025

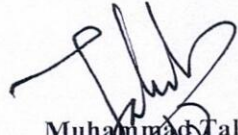
In reference to the above-mentioned subject and letter, the office of the RRRC acknowledges receipt of your letter dated 17 August 2025 regarding the request for approval of four Temporary Safer Shelter (TSS) models in line with the Government of Bangladesh-approved TSS application. After careful review and consideration, the RRRC office is pleased to approve for the implementation of the following two TSS models:

Model 3: **Upgraded Mid-Term Shelter (MTS) with TSS Features**

Model 4: **CGI Roofing & Cement-Soaked Geotextile Shelter (CR&CS-GS) – New TSS Model**

2. However, regarding the model 1 (Mud Tally Shelter-MTS) and Model 2 (Waste Revive Resilient Shelter-WRRS), it has been decided to resubmit the drawing, design and BoQ according to the approved guidelines.

Thank you for your continuous support and cooperations.

  
**Muhammad Talut**  
(Deputy Secretary)  
Mobile: 01847-424197  
E-mail: [contact@rrrc.gov.bd](mailto:contact@rrrc.gov.bd)

**Mr. David Bugden**  
Principal Coordinator  
Inter Sector Coordination Group (ISCG)  
Cox's Bazar

Copy for kind information:

1. **Additional Refugee Relief and Repatriation Commissioner**, this office
2. **Camp-in-Charge (all)**, Ukhiya/Teknaf, Cox's Bazar.
3. **PS to RRRC** (For kind attention of RRRC).
4. Office Copy.

#### General Notes

**Shelter size**-10'x15'(150 sqft)

**Flooring**: Sand & Cement

**Plinth Beam**: Cement & sand mortar

**Wall**: Bamboo mat with cement soaked Geo-textile wall

**Structure**: Bamboo frame, Metal footing foundation

**Roofing**: Clay sand rice straw chicken wire mesh with cement plaster

## TSS (Temporary Safer Shelter) Cement Soaked Geo Textile with Cement Stabilized Soil Shelter

ISCG SCCCM SECTOR  
SCCCM Sector Standards - Bangladesh

Rohingya  
Refugee  
Response  
Bangladesh

SECTORS  
SCCM  
Cox's Bazar, Bangladesh



Coordination Hub, Kabita Sonari, Motel Road,  
Cox's Bazar-4700, Bangladesh

Project Title: TSS (Temporary Safer Shelter)  
Cement Soaked Geo Textile with Cement  
Stabilized Soil Shelter

Project No: 01

Drawing No:

Scale:

Sheet No:

Date: June, 2025.

Sketch & Planning by:  
(Shelter taskforce Team)

Drawn by:  
(Meer Md. Ferdous Islam, Syed Naved Zaman & Umi Das)

Design & Checked by:  
(Shelter taskforce Team)

Technical Support & Validated by:  
SCCCM Sector-ESG and RRRC



SAVES WATERLAND PLANT TREES  
FOR NEXT GENERATION

#### LEGEND:

 Woven Bamboo Mat wall

 Bamboo

 Cement Soaked  
Geo Textile

0 1m 2m

  
Kamail Hossain  
Maintenance Officer  
RRRC Office, Cox's Bazar

  
Muhammad Talut  
Deputy Secretary  
RRRC Office, Cox's Bazar





#### General Notes

**Shelter size:** 10'x15' (150 sq ft)  
**Flooring:** Sand & Cement  
**Plinth Beam:** Cement & sand mortar  
**Wall:** Bamboo mat with cement soaked Geo-textile wall  
**Structure:** Bamboo frame, Metal footing foundation  
**Roofing:** Clay sand rice straw chicken wire mesh with cement plaster

ISCG SCCC Sector  
 SCCC Sector Standards - Bangladesh  
 Rohingya Refugee Response  
 Bangladesh  
 Shelter & CCCM Sector  
 Cox's Bazar, Bangladesh  
 Coordination Hub, Kabita Sonari, Motel Road,  
 Cox's Bazar-4700, Bangladesh

**Project Title:** TSS (Temporary Safer Shelter)  
**Cement Soaked Geo Textile with Cement Stabilized Soil Shelter**

**Project No:** 01

**Drawing No:**

**Scale:**

**Sheet No:** 3D View

**Date:** June, 2025.

**Sketch & Planning by:**  
 [Shelter taskforce Team]

**Drawn by:**  
 [Meer Md.Ferdous Islam, Syed Naved Zaman & Umi Das]

**Design & Checked by:**  
 [ ] & Shelter taskforce Team

**Technical Support & Validated by:**  
 SCCC Sector-4500 and RRRC



#### LEGEND:

Woven Bamboo Mat wall

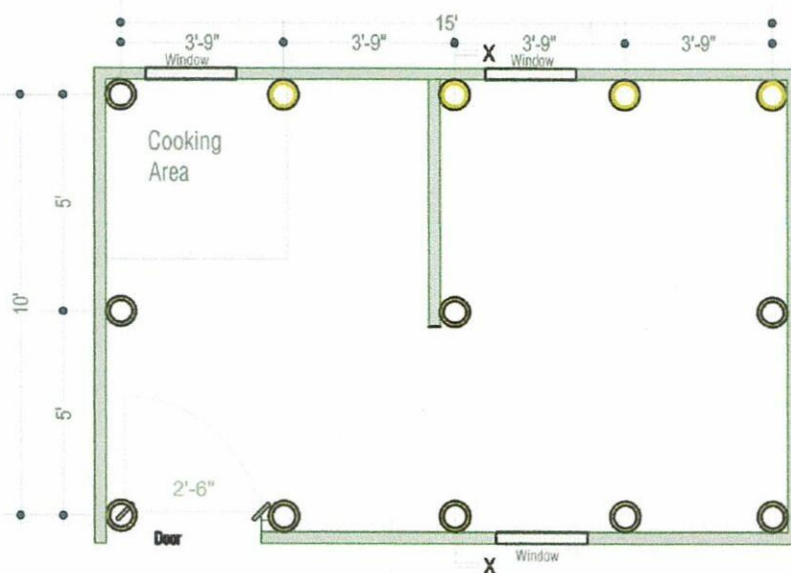
Bamboo

Cement Soaked Geo Textile

0 1m 2m

*Ismail*  
 Md. Ismail Hossain  
 Care & Maintenance Officer  
 RRRC Office, Cox's Bazar

*Muhammad Talut*  
 Muhammad Talut  
 Deputy Secretary  
 RRRC Office, Cox's Bazar



EXISTING SHELTER PLAN

#### General Notes

**Shelter size:** 10'x15' (150 sq ft)  
**Flooring:** Sand & Cement  
**Plinth Beam:** Cement & sand mortar  
**Wall:** Bamboo mat with cement soaked Geo-textile wall  
**Structure:** Bamboo frame, Metal footing foundation  
**Roofing:** Clay sand rice straw chicken wire mesh with cement plaster

ISCG SCCCM SECTOR  
 SCCCM Sector Standards - Bangladesh  
 Rohingya Refugee Response  
 SHELTER & CCCM SECTOR  
 Coordination Hub, Kabita Soroni, Motel Road, Cox's Bazar-4700, Bangladesh

Project Title: TSS (Temporary Safer Shelter)  
 Cement Soaked Geo Textile with Cement Stabilized Soil Shelter

Project No: 01

Drawing No: 01

Scale: 1:1

Sheet No: 01

Date: June, 2025.

Sketch & Planning by:  
 [Shelter taskforce Team]

Drawn by:  
 [Meer Md Feroous Islam, Syed Naved Zaman & Umi Das]

Design & Checked by:  
 [Shelter taskforce Team]

Technical Support & Validated by:  
 SCCCM Sector-ISCG and RRRC



SAVE WATER AND PLANT TISSUES  
 FOR NEXT GENERATION

#### LEGEND:

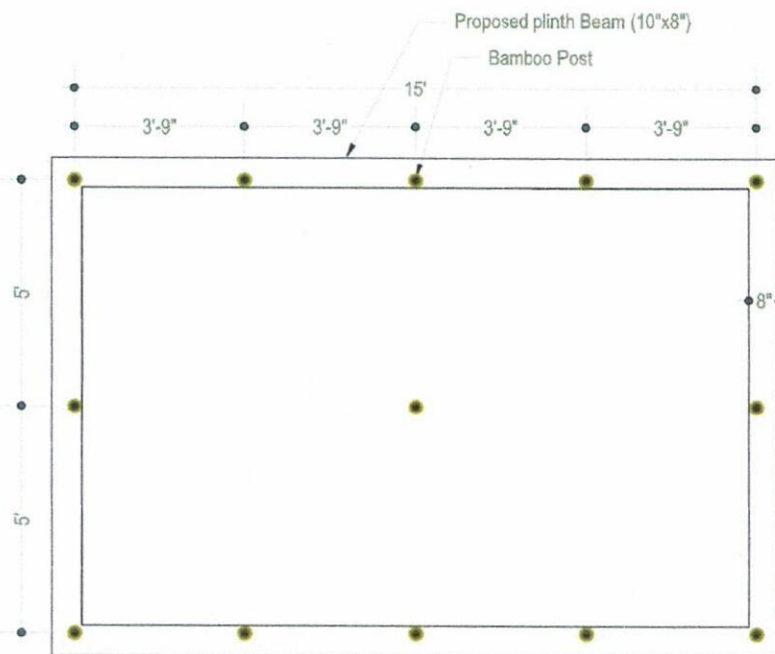
Woven Bamboo Mat wall    Bamboo    Cement Soaked Geo Textile

0 1m 2m

Md. Ismail Hossain  
 Care & Maintenance Officer  
 RRRC Office, Cox's Bazar

Muhammad Talut  
 Deputy Secretary  
 RRRC Office, Cox's Bazar





**PLINTH BEAM LAYOUT PLAN**

#### General Notes

**Shelter size**-10'x15'(150 sq ft)  
**Flooring**: Sand & Cement  
**Plinth Beam**: Cement & sand mortar  
**Wall**: Bamboo mat with cement soaked Geo-textile wall  
**Structure**: Bamboo frame, Metal footing foundation  
**Roofing**: Clay sand rice straw chicken wire mesh with cement plaster

**ISCG SCCC Sector**  
**SCCC Sector Standards - Bangladesh**  
**Rohingya Refugee Response**  
**SECTOR**  
**Coordination Hub, Kabila Soroni, Motel Road, Cox's Bazar-4700, Bangladesh**

**Project Title**: TSS(Temporary Safer Shelter)  
**Cement Soaked Geo Textile with Cement Stabilized Soil Shelter**

**Project No**: 01

**Drawing No**: 02

**Scale**: 1:1

**Sheet No**: 02

**Date**: June, 2025.

**Sketch & Planning by**:  
 [Shelter taskforce Team]

**Drawn by**:  
 [Meer Md.Ferdous Islam, Syed Naved Zaman & Umi Das]

**Design & Checked by**:  
 [Shelter taskforce Team]

**Technical Support & Validated by**:  
 SCCC Sector-4SCG and RRRC



#### LEGEND:

Woven Bamboo Mat wall

Bamboo

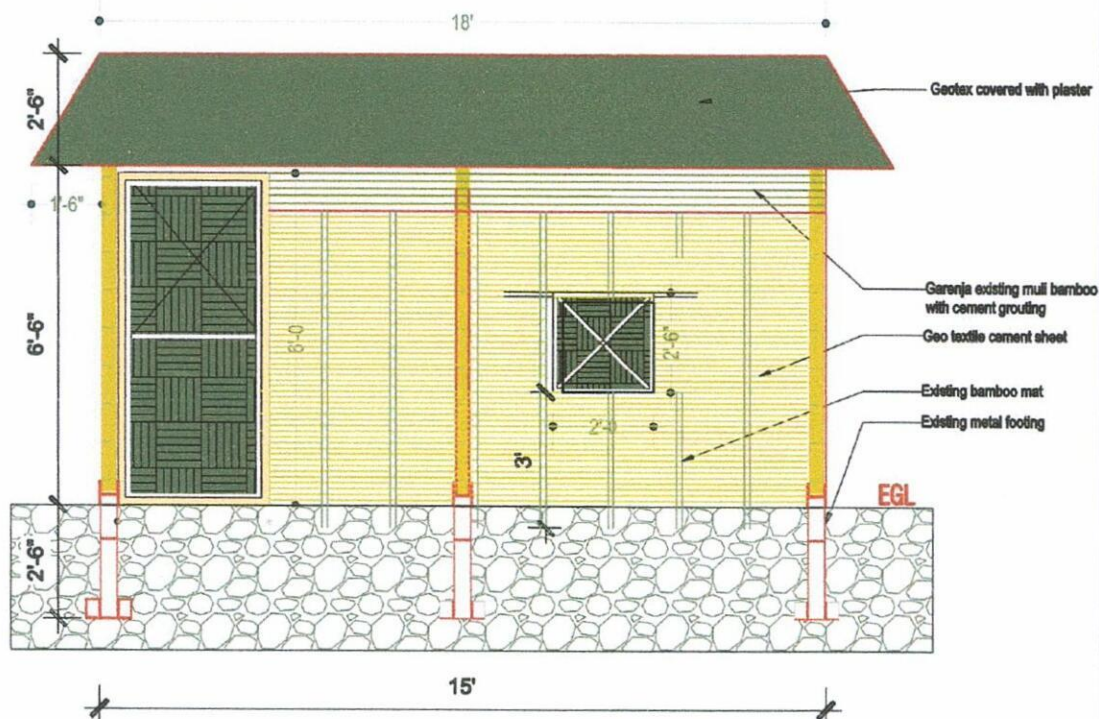
Cement Soaked Geo Textile

0 1m 2m

*[Signature]*  
 Md. Ismail Hossain  
 Maintenance Officer  
 Office, Cox's Bazar

*[Signature]*  
 Muhammad Talut  
 Deputy Secretary  
 RRRC Office, Cox's Bazar





#### General Notes

**Shelter size:** 10'x15'(150 sft)  
**Flooring:** Sand & Cement  
**Plinth Beam:** Cement & sand mortar  
**Wall:** Bamboo mat with cement soaked Geo-textile wall  
**Structure:** Bamboo frame, Metal footing foundation  
**Roofing:** Clay sand rice straw chicken wire mesh with cement plaster

#### ISCG SCCC Sector

SCCCM Sector Standards - Bangladesh

Rohingya Refugee Response  
 Shelter & CCCM Sector  
 Cox's Bazar, Bangladesh

Coordination Hub, Kabita Soroni, Motel Road,  
 Cox's Bazar-4700, Bangladesh

**Project Title:** TSS(Temporary Safer Shelter)  
 Cement Soaked Geo Textile with Cement  
 Stabilized Soil Shelter

**Project No:** 01

**Drawing No:** 04

**Scale:** 1:1

**Sheet No:** 04

**Date:** June, 2025.

**Sketch & Planning by:**  
 [Shelter taskforce Team]

**Drawn by:**  
 [Meer Md.Ferdous Islam, Syed Naved Zaman & Umi Das]

**Design & Checked by:**  
 [Shelter taskforce Team]

**Technical Support & Validated by:**  
 SCCC Sector-ISCG and RRRC



SAVE WATERLAND PLANT TREES  
 FOR NEXT GENERATION

#### LEGEND:

Woven Bamboo Mat wall

Bamboo

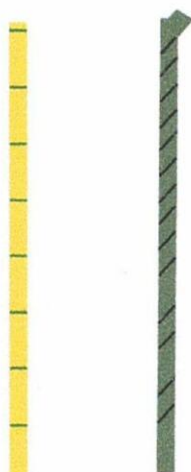
Cement Soaked  
 Geo Textile

0 1m 2m

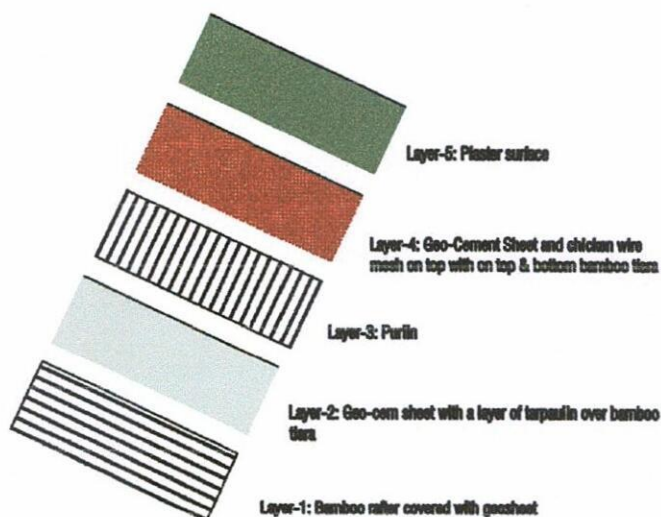
*Ismail*  
 Md. Ismail Hossain  
 Care & Maintenance Officer  
 RRRC Office, Cox's Bazar

*Talut*  
 Muhammad Talut  
 Deputy Secretary  
 RRRC Office, Cox's Bazar





Exposed bamboo covered with cement soaked geotextile strips



Layers of roof structure

#### General Notes

Shelter size-10'x15'(150 sqft)  
Flooring: Sand & Cement  
Plinth Beam: Cement & sand mortar  
Wall: Bamboo mat with cement soaked Geo-textile wall  
Structure: Bamboo frame, Metal footing foundation  
Roofing: Clay sand rice straw chicken wire mesh with cement plaster

ISCG SCCCMM SECTOR  
SCCCMM Sector Standards - Bangladesh  
Rohingya Refugee Response  
SECTOR  
Bangladesh  
Coordination Hub, Kabita Seroni, Motel Road, Cox's Bazar-4700, Bangladesh

Project Title: TSS (Temporary Safer Shelter)  
Cement Soaked Geo Textile with Cement Stabilized Soil Shelter

Project No: 01

Drawing No: 05

Scale: 1:1

Sheet No: 05

Date: June, 2025.

Sketch & Planning by:  
[Shelter taskforce Team]  
Drawn by:  
[Meer Md.Ferdous Islam, Syed Navid Zaman & Umi Das]

Design & Checked by:  
[Shelter taskforce Team]  
Technical Support & Validated by:  
SCCCMM Sector-ISCG and FPRRC



#### LEGEND:

Woven Bamboo Mat wall

Bamboo

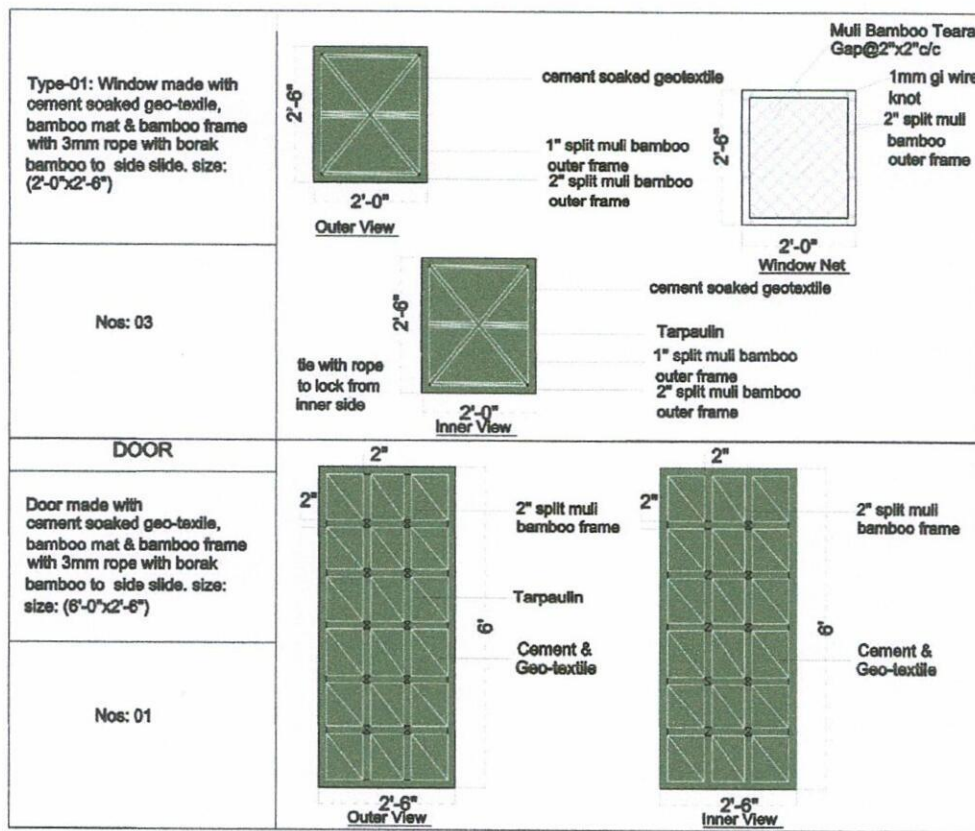
Cement Soaked Geo Textile

0 1m 2m

Md. Ismail Hossain  
Care & Maintenance Officer  
RRRC Office, Cox's Bazar

Muhammad Talut  
Deputy Secretary  
RRRC Office, Cox's Bazar





DOOR & WINDOW DETAILS

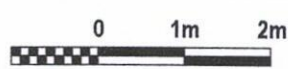


LEGEND:

Woven Bamboo Mat wall

Bamboo

Cement Soaked Geo Textile



General Notes

Shelter size-10'x15'(150 sf)  
 Flooring: Sand & Cement  
 Plinth Beam: Cement & sand mortar  
 Wall: Bamboo mat with cement soaked Geo-textile wall  
 Structure: Bamboo frame, Metal footing foundation  
 Roofing: Clay sand rice straw chicken wire mesh with cement plaster

ISCG SCCCM SECTOR  
 SCCCM Sector Standards - Bangladesh  
 Rohingya Refugee Response  
 SHELTER & CCCM SECTOR  
 Cox's Bazar, Bangladesh  
 Coordination Hub, Kabita Sononi, Motel Road, Cox's Bazar-4700, Bangladesh

Project Title: TSS (Temporary Safer Shelter)  
 Cement Soaked Geo Textile with Cement Stabilized Soil Shelter

Project No: 01  
 Drawing No: 06  
 Scale: 1:1  
 Sheet No: 06  
 Date: June, 2025.

Sketch & Planning by:  
 [Shelter taskforce Team]  
 Drawn by:  
 [Meer Md.Ferdous Islam, Syed Navid Zaman & Umi Das]  
 Design & Checked by:  
 [Shelter taskforce Team]  
 Technical Support & Validated by:  
 SCCCM Sector-NSOG and RRRC

*Md. Ismail Hossain*  
 Md. Ismail Hossain  
 Care & Maintenance Officer  
 RRRC Office, Cox's Bazar

*Muhammad Talut*  
 Muhammad Talut  
 Deputy Secretary  
 RRRC Office, Cox's Bazar