

# URGENT PRIORITIES:

## ADDRESSING THE MOST PRESSING NEEDS OF THE JOINT RESPONSE PLAN

SNAPSHOT OF THE 1<sup>ST</sup> PRIORITY NEEDS JUNE - DECEMBER 2025

### KEY FIGURES: JUNE-DECEMBER 2025<sup>^</sup>

**1.65M** PEOPLE IN NEED

50.7%  
Women & Girls



49.3%  
Men & Boys

Host communities  
**568k**



Rohingya refugees/FDMNs\*  
**1.09M**

**1.48M** PEOPLE TARGETED

50.8%  
Women & Girls



49.2%  
Men & Boys

Host communities  
**392k**



Rohingya refugees/FDMNs\*  
**1.09M**

\*Forcibly Displaced Myanmar Nationals

**USD 455.6M** TOTAL 1<sup>ST</sup> PRIORITY NEEDS

**USD 176.1M** TOTAL 1<sup>ST</sup> PRIORITY GAP

### Cox's Bazar

1<sup>ST</sup> PRIORITY NEEDS  
1<sup>ST</sup> PRIORITY GAP

**USD 434.1M**  
**USD 162.9M**

### Bhasan Char

1<sup>ST</sup> PRIORITY NEEDS  
1<sup>ST</sup> PRIORITY GAP

**USD 21.5M**  
**USD 13.2M**

**USD 934.5M** TOTAL REQUIRED of JRP 2025+

**USD 840.2M**

Rohingya Refugees/  
FDMN

**USD 85.1M**

Bangladeshi Host  
Community



\*This includes 57 appealing partners and 84 implementing partners (of the appealing partners, 28 are implementing activities under other projects).

### HIGHLIGHTED 1<sup>ST</sup> PRIORITY ACTIVITIES OF THE PLAN (JUN-DEC)



#### FOOD SECURITY

- Food Assistance at 100%



#### HEALTH

- Essential, life-saving emergency medical interventions, including referral services and secondary health care/field hospitals.
- Streamlined Epidemiology, Surveillance, Infodemic management & Response, Essential Immunization and Vaccination, Primary Health Care Centers.
- Rehabilitation and Physiotherapy Centers.



#### PROTECTION

- Protection (\$15.5M: Registration \$7.9M + \$7.6M in other activities): Case management (camp security threats + access to services), protection monitoring (refoulement prevention, access to territory + advocacy on humanitarian grounds), legal aid (case filing, counselling, representation), community-based protection: PWD support & community consultations, Capacity building of law enforcement agencies (security pillar) Capacity



#### GENDER-BASED VIOLENCE

- GBV (\$7.7M): Case management, PSS, referrals, risk mitigation/GBV awareness.



#### CHILD PROTECTION

- CP (\$7.9M): Child Protection Situation Monitoring and Child Rights Monitoring, community-based protection, outreach/awareness raising, case management, structured psychosocial support, system strengthening, capacity building.



#### SHELTER-CCCM

- LPG \$26M (to sustain current levels) DRM \$26.7M (including Emergency Shelter, NFI (\$4.4M) Slope stabilization (\$2.3M)
- Service Coordination and Site Management Support \$1.2M



#### NUTRITION

- Prevention of malnutrition (blanket supplementary feeding, maternal and infant young child nutrition (camps), micronutrient deficiency prevention/control (host and camps), nutrition sensitive e-voucher (camps).
- Treatment of malnutrition (host and camps).



#### LIVELIHOODS AND SKILLS DEVELOPMENT

- Each month, 600 graduates of the Sewing Machine Operation vocational training programme are engaged in producing menstrual pads and underwear for women and girls (LSDS plans to scale to 3,000 volunteers in current facilities). Items are sold on a partial cost recovery basis to WASH sector partners, which distribute them twice a year with soap and in a reusable carrying bag, as part of menstrual hygiene management (MHM) kits. The LSDS-WASH collaboration ensures that a portion of costs are reinvested into the camps.



#### EDUCATION

- 100% of Rohingya volunteer teachers (including master trainers essential in maintaining quality of teaching by supporting teachers).
- Other education volunteers (e.g. chaperones, cleaners, guards, supporting access to education for vulnerable groups, safety and basic hygiene standards).
- Staff costs for partners supporting teachers and education activities in the camps.



#### WASH

- Maintenance of water supply; emergency water supply (reduced but kept).
- Hygiene items reduced by 50% (soap, kits, MHM).
- Sanitation O&M (waste & sludge collection).

# SNAPSHOT OF THE 1<sup>ST</sup> PRIORITY NEEDS: JUNE-DECEMBER 2025

## POPULATION TARGETED IN 2025: ROHINGYA REFUGEES/ FDMNs AND HOST COMMUNITY IN COX'S BAZAR



**1,045,298**

**51.2%** Women & Girls  
**48.8%** Men & Boys

**542,138** Children (<18 yrs)  
264,823 girls  
277,315 boys

**458,943** Adults (18-59 yrs)  
251,516 women  
207,427 men

**44,217** Elderly (60+ yrs)  
19,229 women  
24,988 men



**392,126**

**49.6%** Women & Girls  
**50.4%** Men & Boys

**200,066** Children (<18 yrs)  
97,638 girls  
102,428 boys

**174,085** Adults (18-59 yrs)  
89,677 women  
84,408 men

**17,975** Elderly (60+ yrs)  
7,328 women  
10,647 men

## POPULATION TARGETED IN 2025: ROHINGYA REFUGEES/ FDMNs ON BHASAN CHAR\*



**40,000\*\***

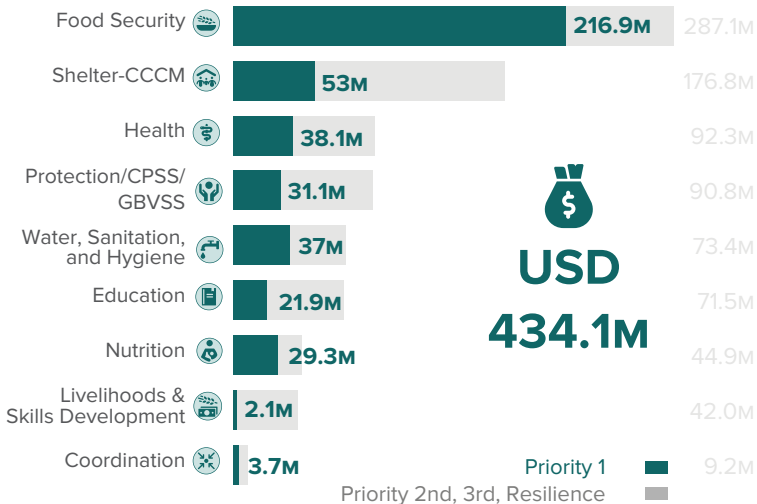
**51.3%** Women & Girls  
**48.7%** Men & Boys

**22,512** Children (<18 yrs)  
11,150 girls  
11,362 boys

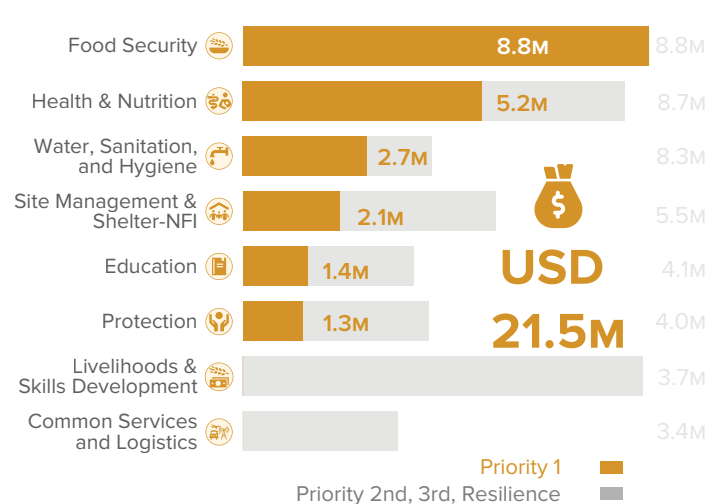
**16,612** Adults (18-59 yrs)  
9,025 women  
7,587 men

**877** Elderly (60+ yrs)  
351 women  
526 men

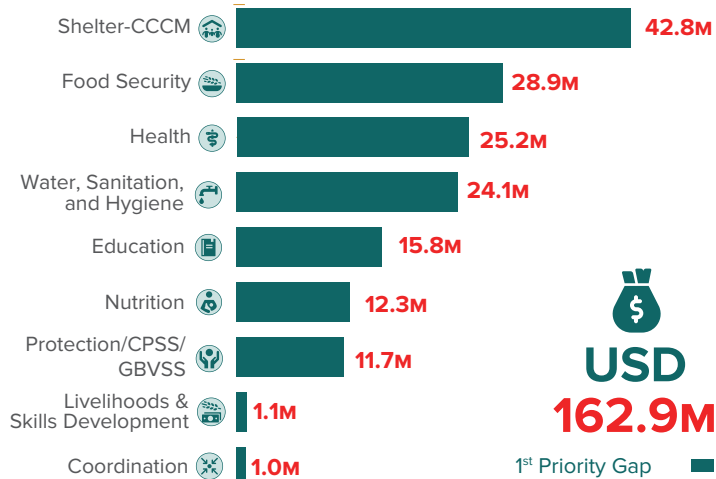
### 1<sup>ST</sup> PRIORITY NEEDS FOR 2025: COX'S BAZAR (JUN-DEC)



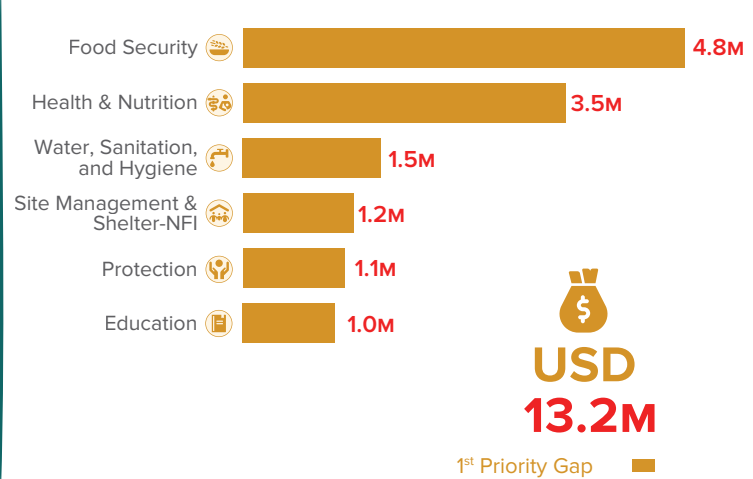
### 1<sup>ST</sup> PRIORITY NEEDS FOR 2025: BHASAN CHAR (JUN-DEC)



### 1<sup>ST</sup> PRIORITY GAP FOR 2025: COX'S BAZAR (JUN-DEC)



### 1<sup>ST</sup> PRIORITY GAP FOR 2025: BHASAN CHAR (JUN-DEC)



^ JRP 2025 includes 50,000 confirmed new arrivals who fled more recently to Bangladesh and who require protection and assistance in the Rohingya camps. Additionally, an estimated 50,000 new arrivals are believed to be living in the Cox's Bazar camps and are in the process of being biometrically identified. Biometric identification is an exercise in which newly arrived Rohingyas are recorded through biometric identification procedure jointly by GoB and UNHCR. This population, and any further new arrivals who arrive during 2025, will be included in future updates to Sector responses and budgets.

+ The total requirement for JRP 2025 includes USD 840.2M for Rohingya refugees/FDMNs, USD 85.1 for the Bangladeshi host community, and USD 9.2M for Coordination.

\* The Bhasan Char Response is led by the Government of Bangladesh, with the support of UNHCR on behalf of the broader humanitarian community. It is coordinated separately from the Sectors in Cox's Bazar.

\*\* This JRP is appealing to support 40,000 Rohingya refugees/FDMNs on the island. Adjustments to the appeal will be made, if required, based on the actual number of Rohingya refugees/FDMNs on Bhasan Char.