

Minimum Package of Essential Health Services For Primary and Secondary Healthcare Facilities

A High Priority Health Services Package

Bangladesh Rohingya Response at
Cox's Bazar



2024

Contact: coord_cxb@who.int

Background

One of the health cluster's core coordination functions is to ensure that the affected people access quality healthcare services. Being a cluster-like approach in the Rohingya Response at Cox's Bazar, the Health Sector also aims for the same goal i.e., all the essential health services should be delivered equitably while ensuring quality and accessibility. Central to this goal is a cohesive definition of the standard of health services to be delivered at each level of the health service delivery platforms- organized into a set of/packages of services. The Minimum Package of Essential Health Services (MPEHS) is to set and demarcate minimum standards to operate in each service delivery platform and a Maximum that they can extend to ensure the rational use of resources along with the quality.

In the Cox's Bazar Rohingya Response, the first Minimum Package of Essential Health Services was developed in 2017 after the influx and revised in December 2018 and February 2020 by the WHO-led Health Sector under the Leadership of the Ministry of Health and Family Welfare (MoHFW), Bangladesh and the Office of The Refugee Relief and Repatriation Commissioner (RRRC). The packages considered SPHERE standards, UNHCR Global Strategy for Humanitarian Response, and contextualized realities and outlined a set of priority health services for primary healthcare facilities operating in the Rohingya refugee response. The package was only for primary healthcare and was officially endorsed by the government and was initially for two-year terms later extended to 2022.

The scope of the previous package was limited to general primary healthcare facilities only with the following classification of primary healthcare facilities-

- a) Health Post: Comparable to the MoHFW Community Clinic (CC) but adapted to the unique context with the criteria that 1 health post for 10,000 population and within 20 minutes walking distance from patients' homes delivering simple curative, maternal / child health and immunization services with referral to the Primary Health Centre (PHC) facilities and Operational during daytime only (6 days in a week and 6-8 hours per day)
- b) Primary Health Centre: comparable to the MoHFW Union Health and Family Welfare Center (UHFWC) but adapted to the unique context with the criteria that 1 Primary Health Centre (PHC) for 25,000-30,000 population and within 30 minutes walking distance from patients' homes and remain operational 24 hours in a day and 7 days a week delivering the essential PHC services.

The packages provided minimum service catalogue and Staffing Norms for these two variations of primary health care: Health Post (HP) and Primary Health Centre (PHC). However, Health services provided at the community level (by the Community Health Workers) and Secondary Health Care Facilities at the camp level i.e., the Field Hospital remained unstandardized by the previous package.

Chapter 1: Introduction

Since the package was developed and revised based on the almost five years old scenario and context of the response, and the context has evolved and the health system and needs changed a lot over time, there has been an axiomatic need to revise the MPEHS to meet global standards, respond to the current morbidity burden, and organize care to respond to the evolving current context and its challenges as well as ensure quality with the limited resources. Beyond revising and updating the existing package of services for primary healthcare, it is required to set a standard for community-level healthcare and secondary healthcare services (Field Hospitals). To address these needs, the newer version of the package aims to develop and include minimum essential service packages for Community-level Healthcare and secondary healthcare services along with a revision of the existing package of services for primary healthcare.

This version of the package will address the below Classification of Health Care:

- a) Community Level Health Care: Primary care services delivered by community health workers (CHWs) following the CHW Package i.e., Primary prevention: RCCE, Mobilization, Screening/Referral, NO CURATIVE SERVICES. CHWs are categorized as skilled volunteers (trained at least 2-6 months). They have long experience working in camps and also supervised by the CHW supervisors.
- b) Health Post: Comparable to the MoHFW Community Clinic (CC) but adapted to the unique context with the criteria that 1 health post for 10,000 population and within 20 minutes walking distance from patients' homes delivering simple curative, maternal / child health and immunization services with referral to the Primary Health Centre (PHC) facilities and Operational during daytime only (6 days in a week and 6-8 hours per day)
- c) Primary Health Centre: Comparable to the MoHFW Union Health and Family Welfare Center (UHFWC) but adapted to the unique context with the criteria that 1 Primary Health Centre (PHC) for 25,000-30,000 population and within 30 minutes walking distance from patients' homes and remain operational 24 hours in a day and 7 days a week delivering the essential PHC services.
- d) Field Hospital: Comparable to the MoHFW Upazila Health Complex (UHC) as the first-level referral facility. It is characterized by the availability of physicians (occasionally specialists), diagnostic tools (basic lab and simple radiology), inpatient care, and emergency surgery & operative care, including obstetric interventions (CEmONC), emergency care, advanced lab diagnostics, etc. Adopted the 50-bed structure of the Upazila Health Complex (UHC).

Adapting the WHO High Priority Health Services for Humanitarian Setting (H3 Package) for MPEHS

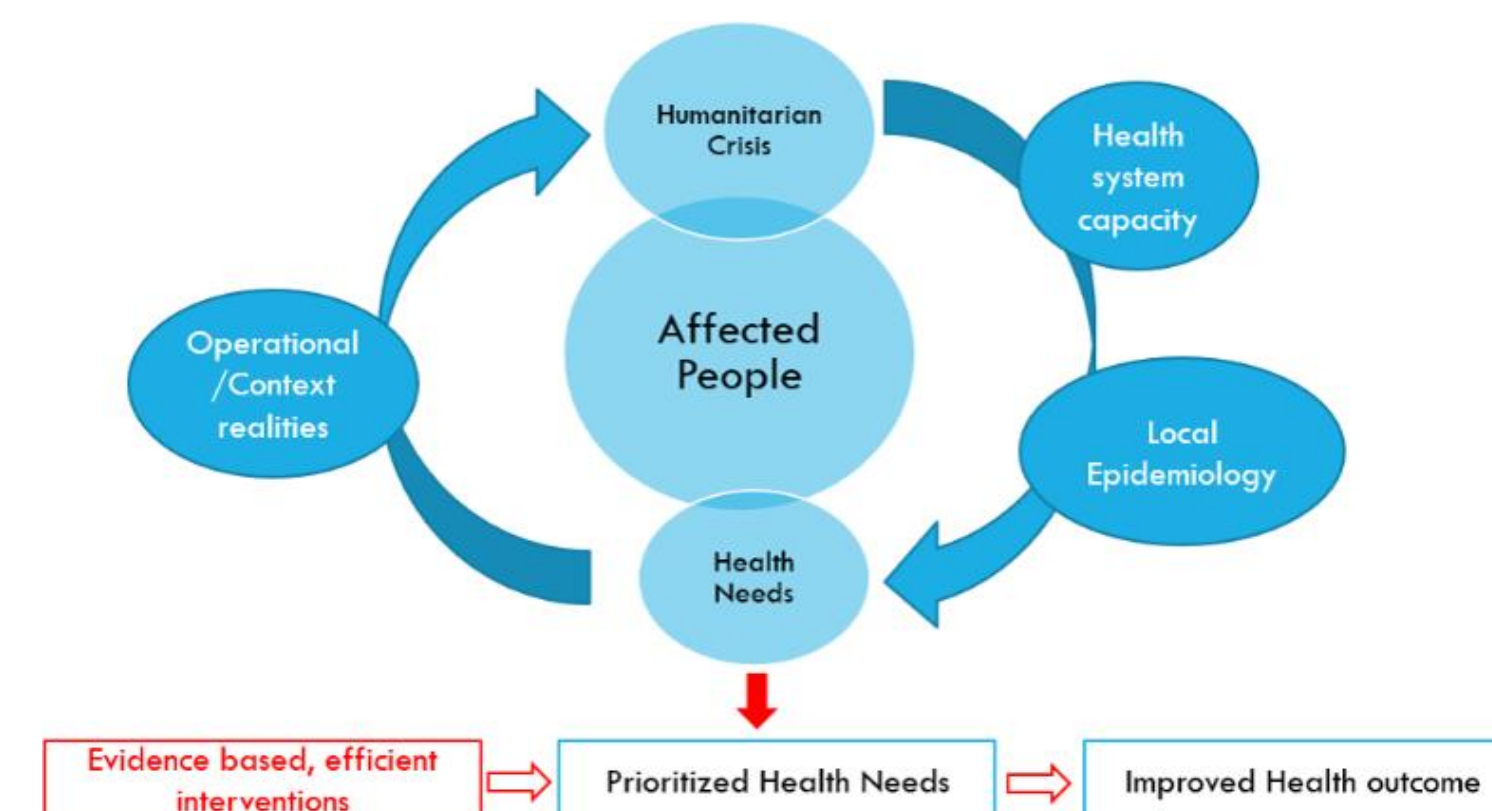
For this new version of MPEHS, the WHO High Priority Health Services for Humanitarian Setting (H3 Package) was used as a global reference package aligned with the SDG 3.8: Principles of UHC and the WHO SPDI tool has been used to contextualize the package with the existing scenario.

In March 2023, WHO released the High Priority Health Services for Humanitarian Settings (H3P), a set of guidelines for essential health services in humanitarian settings. This 'redline' guidance aims to elevate the standard of care provided by humanitarian partners. To customize this for Cox's Bazar, a diverse group of experts, healthcare professionals, and policymakers convened for a two-day workshop. They crafted a draft of Cox's Bazar-specific Essential Health Services Package, considering local standards, resources, and needs. This draft underwent scrutiny by the Strategic Advisory Group (SAG) and technical staff, who also addressed staffing norms absent in the original H3 Package. Following their review and government endorsement, the Health Sector team collaborated with the Global Health Cluster and H3 team to integrate feedback and develop a distributable booklet of the updated Essential Health Service Packages.

The rationale for designing the MPEHS based on H3P

In a fragile and protracted setting, a standard common service package serves several functions.

- i. Provide a policy statement by the Ministry of Health for the health strategy the response.
- ii. Define a set of services to be delivered, as standard, by facility level, which is intended to be used for planning, approvals, etc.,
- iii. on an operational level, used as a guide to healthcare facility managers on the role, responsibilities, and standards of their institutions,
- iv. To serve as a basis for resource allocation and for reducing fragmentation, gaps, and inequities in access to healthcare



The Essential Health Service Package (H3P) is a critical initiative aimed at enhancing the quality and accessibility of healthcare services in humanitarian settings. Designed to serve as a foundational guide for humanitarian implementers and donors, H3P promotes accountability and facilitates the integration of essential health services into national Universal Health Coverage (UHC) packages. This initiative acts as an operational entry point for the Humanitarian-Development Nexus, ensuring that services are aligned with both immediate humanitarian needs and long-term development goals.

Purpose of H3P

The primary purpose of H3P is multifaceted, focusing on the following key objectives:

- **Accountability:** H3P promotes the accountability of humanitarian implementers and donors by setting clear standards and expectations.
- **Service Mapping:** It aids in mapping essential health services to national UHC packages, ensuring coherence and alignment with broader health system goals.
- **Operational Reference:** Serving as a reference for operational planning, implementation, and monitoring, H3P helps increase access and coverage of health services.
- **Standard Setting and Quality Improvement:** By defining a minimum set of services to be delivered to affected populations, H3P ensures standard setting and supports quality improvement processes.
- **Support for IASC AAP:** The package supports the Inter-Agency Standing Committee's Accountability to Affected Populations (IASC AAP) framework.
- **Costing and Planning:** H3P provides a reference for costing, feasibility analyses, planning, budgeting, implementation, and monitoring within Joint Response Plans (JRPs).
- **Humanitarian-Development Nexus:** It provides an entry point for operationalizing the Humanitarian-Development Nexus, bridging short-term humanitarian efforts with long-term development strategies.

Scope of H3P

H3P is designed to operate in humanitarian and low-resource settings, addressing both immediate and protracted crises. The scope encompasses a variety of service delivery platforms and networks, all aligned with a primary healthcare approach:

- **Contextual Adaptation:** Humanitarian, Low resource setting, Consideration of local Burden of Diseases (BoD), Health System Capacity
- **Aligned to Primary Healthcare approach:** Community and outpatient services through health posts (HP) and primary healthcare centers (PHCs). Dedicated or integrated primary healthcare.
- **Secondary Care:** Services provided by field hospitals and comprehensive healthcare centers.
- **Staffing and Capacity:** Defined staffing capacities for each delivery platform to ensure efficient and effective service provision.
- **Reproductive Health:** Specific facilities for pregnancy and birthing to deliver Basic Emergency Obstetric and Newborn Care (BEmONC).
- **Healthcare Integration:** Dedicated or integrated primary healthcare services, with core and extended service options.
 - ✓ **Core Services:** Essential services that must be available at all times.
 - ✓ **Extended Services:** Services that may require additional investments in resources, infrastructure, or workforce training before they can be delivered.
- **Standard service definitions:** WHO UHC Compendium, SRH MISP, etc.

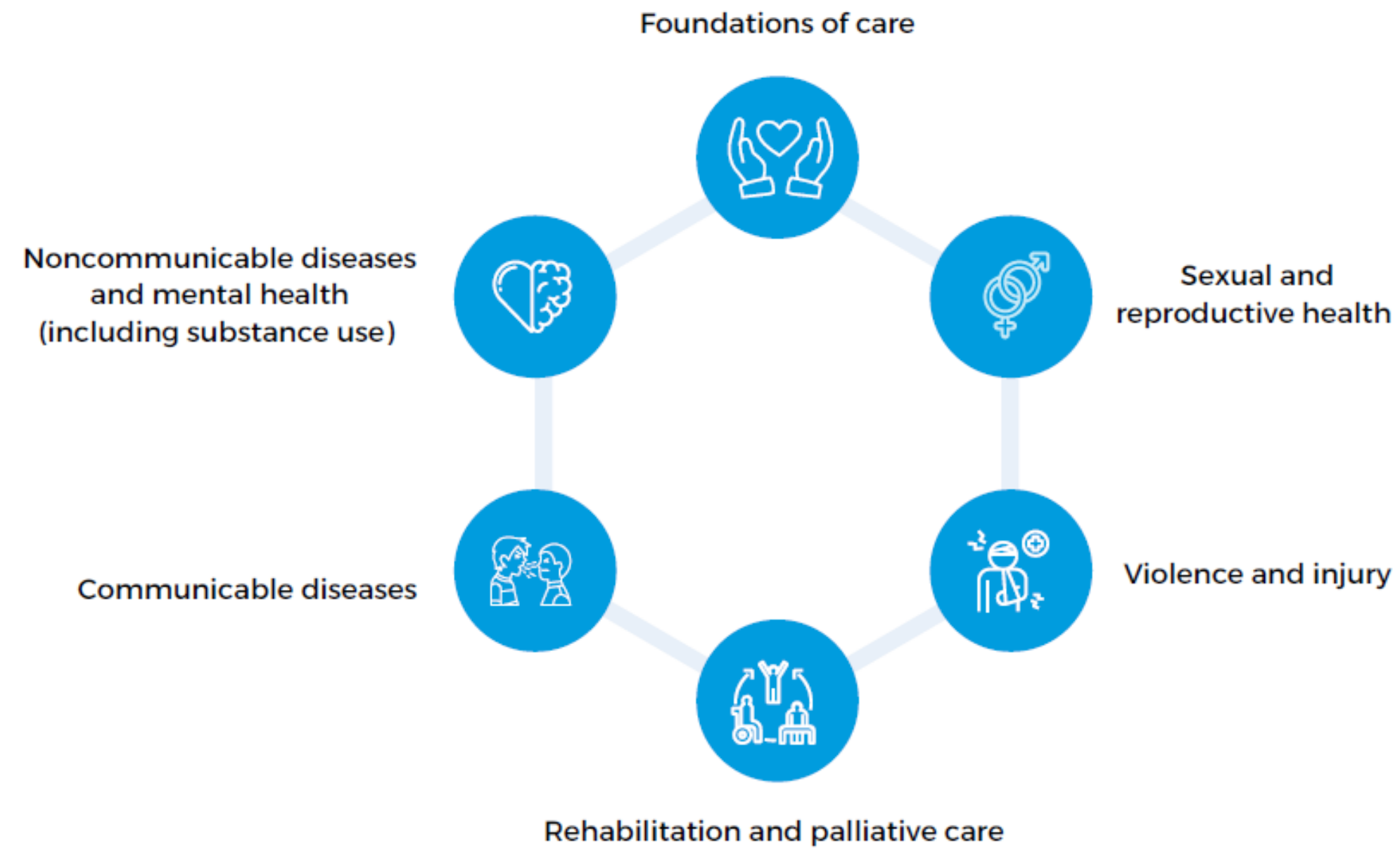


Figure: Components of H3P

Operational Context and Assumptions

H3P is designed with the following assumptions about the operational context:

- Protracted Crises: The package is tailored for settings experiencing prolonged crises with limited national health system capacity.
- Capacity Needs: Humanitarian assistance is essential to meet capacity needs, particularly in human resources and commodities.
- Donor Support: Sustained donor support is critical for the successful implementation and scaling of H3P services.

By addressing these key areas, the Essential Health Service Package (H3P) aims to ensure that affected populations receive timely, effective, and quality healthcare, bridging the gap between humanitarian assistance and sustainable development.

Chapter 2: Service Catalogue in Different Health Service Delivery Platforms: Overview

FOUNDATIONS OF CARE

11-15

First access, continuity and coordination

Longitudinal care planning
Referral planning
Early recognition and system activation for time sensitive conditions
Promotion of self-care

Approach to emergency syndromes

General approach to emergency syndromes
Initial management of difficulty in breathing
Initial management of acute altered mental status
Initial management of shock
Initial management of serious injury
Initial management of sepsis

Approach to common signs and symptoms

General approach to all common signs and symptoms

REPRODUCTIVE AND SEXUAL HEALTH

16-24

Antenatal care

Routine care during pregnancy

Labour and childbirth care

Routine care during first stage of labour
Routine care during second stage of labour
Routine care during third stage of labour
Immediate care for newborn
Management of complications during labour and childbirth

Postnatal care

Routine care for postpartum women
Routine care for newborn
Care for neonatal complications

Abortion

Abortion related care
Care for complications of abortion

Ectopic pregnancy

Diagnosis of ectopic pregnancy
Management of ectopic pregnancy

Menstrual health

Promotion of menstrual health

Contraception and family planning

Screening, testing and counselling for family planning and contraception
Family planning and contraception

Intimate partner and sexual violence (see also Violence section)

Prevention of intimate partner and sexual violence, including rape
Care and support for survivors of intimate partner and sexual violence, including rape
Care and support for survivors of intimate partner and sexual violence, including rape

GROWTH DEVELOPMENT AND AGEING

25-27

Healthy nutrition

Support for healthy nutrition

Undernutrition

Assessment of nutritional status
Management of undernutrition

Healthy growth and development in childhood and adolescence

Longitudinal assessment of growth and development

Palliative care

Holistic palliative care assessment, planning and referrals
Palliative care for physical symptoms and needs

Chapter 2: Service Catalogue in Different Health Service Delivery Platforms: Overview

NONCOMMUNICABLE DISEASES & MENTAL HEALTH 28-44

Cervical cancer

Screening and early detection of pre-invasive cervical cancer

Cardiovascular risks

Assessment of cardiovascular risks

Hypertension

Prevention of hypertension
Longitudinal management of hypertension
Screening and diagnosis of hypertension
Management of hypertensive urgencies and emergencies

Ischaemic heart disease

Prevention of ischaemic heart disease
Screening and diagnosis of ischaemic heart disease
Longitudinal management of ischaemic heart disease
Management of acute ischaemic heart disease
Rehabilitation for ischaemic heart disease

Cerebrovascular disease

Prevention of stroke
Early identification and diagnosis of stroke
Longitudinal management of stroke
Management of acute stroke

Chronic obstructive pulmonary disease

Screening and diagnosis of COPD
Management of acute exacerbation of COPD

Asthma

Prevention of asthma
Screening and diagnosis of asthma
Management of acute exacerbation of asthma
Longitudinal management of asthma

Oral diseases and conditions

Prevention of oral diseases
Screening and diagnosis of oral diseases
Longitudinal management of oral diseases
Management of acute exacerbations of oral diseases

Diseases of the oesophagus, stomach, liver, gallbladder, pancreas and intestines

Prevention of gastrointestinal diseases
Screening and diagnosis of gastrointestinal diseases
Management of gastroesophageal reflux disease
Management of gastritis, peptic ulcer disease and duodenitis
Management of ileus and intestinal obstruction
Management of appendicitis
Management of hernias (inguinal, femoral, abdominal)
Management of gallbladder and biliary diseases
Management of pancreatitis
Management of gastrointestinal bleeding
Management of ascites and acute complications

Diabetes mellitus

Prevention of diabetes mellitus
Screening and diagnosis of diabetes mellitus
Management of hyperglycaemic and hypoglycaemic emergencies
Longitudinal management of diabetes

Thyroid disorders

Screening and diagnosis of thyroid disorders
Management of thyroid disorders

Noninfectious disorders of female genital tract

Management of pelvic organ prolapse

Depression

Assessment of depression
Management of depression

Chapter 2: Service Catalogue in Different Health Service Delivery Platforms: Overview

Anxiety disorders (including PTSD)

Assessment of anxiety disorders
Management of anxiety disorders

Psychotic disorders

Assessment of psychotic disorders
Management of psychotic disorders

Bipolar disorders

Assessment of bipolar disorder
Management of bipolar disorders

Mental disorders |Self-harm

Assessment of self-harm/suicide risk
Management of self-harm / suicide risk

Promotive and preventive mental health services for adolescents

Promotive and preventive mental health services for adolescents
Management of emotional problems and disorders in children and adolescents

Substance use disorders

Screening and diagnosis of alcohol use disorders
Screening and diagnosis of drug use disorders

Screening and diagnosis of epilepsy

Management of epilepsy and seizures

Screening and diagnosis of eye diseases and vision impairment

Management of refractive error, amblyopia and strabismus

Screening and diagnosis of inflammatory skin disorders

Management of dermatitis (atopic, contact, seborrheic)

VIOLENCE AND INJURY.

45-52

Interpersonal violence

Prevention and early recognition of violence
Safe and confidential access to health services for conditions related to violence
Identification of child maltreatment and youth violence
Management of child maltreatment and youth violence

Violence against older people

Identification of violence against older people
Management of violence against older people

Mechanical injury

Counselling for injury prevention
General approach to serious injury
Management of head and face injury (including ocular injury)
Management of spinal injury (including neck injury)
Management of thoracoabdominal injury
Management of pelvic injury (including urogenital)
Management of extremity injury
Management of wounds (excluding burns)

Thermal and chemical injuries (burns)

Counselling for prevention of burns
Management of burns

Envenomation injuries

Counselling for prevention of bite and envenoming injuries
Management of bites and envenoming injuries

Environmental exposures (including drowning)

Prevention of environmental exposures (including drowning)
Management of environmental exposures (including drowning)

Chapter 2: Service Catalogue in Different Health Service Delivery Platforms: Overview

Poisoning and toxic exposures

Prevention of poisoning and toxic exposures
Diagnosis of poisoning and toxic exposures
Management of poisoning and toxic exposures

COMMUNICABLE DISEASES

53-62

HIV

Prevention of HIV
Screening and diagnosis of HIV
Management of HIV

Tuberculosis

Prevention of tuberculosis
Case detection of tuberculosis
Diagnosis of tuberculosis

Malaria

Screening and diagnosis malaria
Management of malaria

Lower respiratory infections (excluding TB)

Prevention of lower respiratory infections
Screening and diagnosis of lower respiratory infections
Management of acute lower respiratory infections

Enteric infections

Prevention of enteric infections
Screening and diagnosis of enteric infections
Management of enteric infections
Prevention of cholera
Screening and diagnosis of cholera
Management of cholera

Sexually transmitted and reproductive tract infections

Prevention of STIs and reproductive tract infections
Screening and diagnosis of STIs and reproductive tract infections
Management of STIs and reproductive tract infections

Urinary tract infections

Screening and diagnosis of urinary tract infections
Management of urinary tract infections

Central nervous system (CNS) infections

Management of brain abscess and encephalitis
Screening and diagnosis of meningitis
Management of meningitis

Ear, nose, and throat (ENT) infections

Screening and diagnosis of ENT infections
Management of ENT infections
Management of ear infections and complications

Eye infections

Prevention of eye infections
Screening and diagnosis of eye infections
Management of eye infections

Skin and soft tissue infections

Screening and diagnosis of skin and soft tissue infections
Management of skin and soft tissue infections

Chapter 3:
Detailed activity
descriptions to
support planning and
implementation



Foundations of care

COMMUNITY HEALTH

HEALTH POST

PRIMARY HEALTHCARE CLINIC

FIELD HOSPITAL (CAMP LEVEL)

Longitudinal care planning

Medical record review (Review and documentation of history and physical including interim events)

Medication review for necessary dose adjustment, cessation, and/or modification (Medication review of chronic therapeutic regimens for complications and adherence)

Referral planning

Coordination of referrals

Discharge planning for inpatient admissions
Counter-referrals

Early recognition and system activation for time sensitive conditions

Coordination of referrals including with receiving facility (Coordination of transfer including with receiving facility)

Protocol for acuity-based triage with validated tool (Protocol for acuity-based triage in emergency units)

Clinical assessment for danger signs and early referral (Protocol for recognition of danger signs in outpatient care)

Protocol to access staffed emergency unit 24 hours per day (Designation of process for access to 24-hour emergency unit)

Promotion of self-care

Environmental modification
Education and advice on self care (Self-care plans)
Caregiver support (Custom Action)

Behavioural modification plans

Foundations of care | Integrated approach to common presentations | Approach to emergency syndromes

[Return to H3 package overview](#) ←

COMMUNITY HEALTH

HEALTH POST

PRIMARY HEALTHCARE CLINIC

FIELD HOSPITAL (CAMP LEVEL)

General approach to emergency syndromes

Clinical assessment for early recognition of the need for referral

Clinical assessment for danger signs and early referral (Clinical assessment for early recognition of the need for referral)

Oral volume resuscitation

History and physical examination
Point of care testing
Basic laboratory tests

Manual airway repositioning (Basic airway management)
Basic airway management
Supplemental oxygen
Oral analgesics
Oral antimicrobials
Oral antipyretics
Oral antiplatelets

Advanced laboratory tests
Point of care ultrasound
Electrocardiogram (ECG)
Continuous vital sign monitoring
Transurethral catheter placement

Oral benzodiazepines
Intramuscular benzodiazepines
Intravenous analgesics
Intravenous antimicrobials

X-ray

Non-invasive mechanical ventilation
Endotracheal intubation
Invasive mechanical ventilation
Intravenous thrombolytics
Intravenous benzodiazepines

Initial management of difficulty in breathing

Intramuscular adrenaline
Multidose inhaler with antimuscarinics
Multidose inhaler with beta agonists
Nebulized antimuscarinics
Nebulized beta agonists
Oral antihistamines
Oral corticosteroids
Oral diuretics

Needle decompression
Intravenous adrenaline
Intravenous antihistamines
Intravenous corticosteroids
Intravenous diuretics

Subcutaneous anticoagulants

Initial management of acute altered mental status

Oral antiepileptics
Oral glucose
Intravenous fluids

Rectal anticonvulsants
Intravenous thiamine

Lumbar puncture
Intravenous antiepileptics

Initial management of shock

Cardiopulmonary resuscitation

Intravenous fluids

Defibrillation

Intramuscular adrenaline for shock
Intravenous adrenaline
Intravenous antihistamines
Intravenous corticosteroids
Intravenous tranexamic acid (TXA)
Intravenous vasopressors for shock

Pericardiocentesis
Blood and blood product transfusion
Therapeutic thoracentesis
Intravenous anticoagulants

Foundations of care | Integrated approach to common presentations | Approach to emergency syndromes

[Return to H3 package overview](#) ←

COMMUNITY HEALTH

HEALTH POST

PRIMARY HEALTHCARE CLINIC

FIELD HOSPITAL (CAMP LEVEL)

Initial management of serious injury

Continuation from the page above

Pelvic binding
Spine immobilization
Wound care
Splinting

Intravenous analgesics

Nonoperative reduction and immobilization
Needle thoracostomy for decompression

Diagnostic peritoneal lavage
Blood and blood product transfusion
Pericardiocentesis
Three-sided chest dressing for sucking chest wound
Tube thoracostomy
Intravenous anticoagulants
Intravenous anxiolytics
Intravenous tranexamic acid (TXA)

Initial management of sepsis

Diagnostic paracentesis
Lumbar puncture
Joint aspiration
Intravenous antimicrobials
Intravenous antipyretics
Intravenous vasopressors

Foundations of care | Integrated approach to common presentations | Approach to common signs and symptoms

General approach to all common signs and symptoms

Counselling on warning signs and when to seek additional treatment
Counselling on nutrition, food safety, and healthy diet
Condition-specific nutrition assessment and counselling (Counselling on nutrition, food safety, and healthy diet)
Clinical assessment for danger signs and early referral (Clinical assessment for early recognition of the need for referral)

Counselling on behavioural/environmental modifications to address symptoms

History and physical examination
Rapid evaluation for conditions requiring urgent interventions
Expanded vital signs, including pulse oximetry (Pulse oximetry)
Pulse oximetry
Otoscopy

Foundations of care | Integrated approach to common presentations | Approach to common signs and symptoms

[Return to H3 package overview](#) ←

COMMUNITY HEALTH

HEALTH POST

PRIMARY HEALTHCARE CLINIC

FIELD HOSPITAL (CAMP LEVEL)

General approach to all common signs and symptoms

Oral rehydration solution

Peak flow measurement

Speculum examination

Transurethral catheter placement

Nasogastric suction

Supplemental oxygen

Multidose inhaler with beta agonists

(Inhaled bronchodilators for cough and dyspnoea)

Topical antimicrobials

Topical analgesics

Topical antihistamines

Topical corticosteroids

Intramuscular antimicrobials

Intramuscular analgesics

Oral analgesics

Oral and rectal antipyretics (Oral antipyretics)

Oral antimicrobials

Oral antiemetics

Oral antihistamines

Oral corticosteroids

Oral antiplatelets

Oral diuretics

Oral contraceptives

Oral zinc (Custom Action)

Oral H2 receptor antagonist (Custom Action)

Oral proton pump inhibitor (Custom Action)

Intravenous fluids

Intravenous analgesics

Intravenous antimicrobials

Intravenous antiemetics

Electrocardiogram (ECG)

Ultrasound

X-ray

Lumbar puncture



Sexual and reproductive health

Reproductive and sexual health | Pregnancy and birth | Antenatal care

[Return to H3 package overview](#) ←

COMMUNITY HEALTH

HEALTH POST

PRIMARY HEALTHCARE CLINIC

FIELD HOSPITAL (CAMP LEVEL)

Routine care during pregnancy

<p>Referral of pregnant women to ANC (Custom Action)</p>	<p>Oral energy and protein dietary supplementation among undernourished populations Vaccination: Tetanus toxoid containing vaccine (TTCV) Oral antihelminthics in endemic areas History and physical examination Dating of pregnancy by history (including last menstrual period) and physical examination (Custom Action) Symphysis-fundal height measurement (Custom Action) Blood pressure measurement and assessment (Custom Action) Screening for gestational diabetes (Custom Action) Routine screening for STIs, including HIV (Custom Action) Screening for hepatitis B (Custom Action) Assess fetal presentation (Custom Action) Basic laboratory tests</p> <p>Monitor fetal heart rate Oral iron and folic acid supplementation Oral preventive calcium supplementation among populations with low dietary calcium intake Oral antacids Oral antimalarials in endemic areas</p>	<p>Fetal biophysical profile (Custom Action) Fetal nonstress test (Custom Action) Advanced laboratory tests Ultrasound</p>	
--	--	---	--

Reproductive and sexual health | Pregnancy and birth | Labour and childbirth care

COMMUNITY HEALTH

HEALTH POST

PRIMARY HEALTHCARE CLINIC

FIELD HOSPITAL (CAMP LEVEL)

Routine care during first stage of labour

	<p>Digital vaginal examination Clinical assessment of uterine activity</p>	<p>Intermittent auscultation of the fetal heart rate Fetal auscultation using a doppler ultrasound Relaxation techniques for pain management Monitoring of labour with partograph/labour care guide (Custom Action)</p>	<p>Epidural anaesthesia for pain</p>
--	---	--	--------------------------------------

Actions/services in black fonts are mapped at lowest service delivery platforms
 Actions/services in orange fonts are additional/extended services

COMMUNITY HEALTH

HEALTH POST

PRIMARY HEALTHCARE CLINIC

FIELD HOSPITAL (CAMP LEVEL)

Continuation from the page above

Routine care during second stage of labour

Clinical assessment of second stage of labour
 Clinical assessment of uterine contraction
 Vaginal delivery

Routine care during third stage of labour

Monitoring of vaginal bleeding
 Monitoring of maternal vital signs
 Delayed cord clamping and hygienic cord care (Umbilical cord clamping)
 Oral uterotonics for prevention of postpartum haemorrhage
 Intramuscular uterotonics to prevent postpartum haemorrhage
 Anti-D immunoglobulin (Custom Action)
 Intravenous uterotonics to prevent postpartum haemorrhage

Immediate care for newborn

Protecting, promoting and supporting breastfeeding, including: Early initiation of breastfeeding, establishment and maintenance of breastfeeding, immediate skin to skin contact, breastfeeding counselling, and skilled support for re-lactation, wet nursing, use of donor human milk

Counselling on skin-to-skin contact
 Counselling on personal hygiene and handwashing with soap
 Counselling and support for newborn care, including responsive caregiving and stimulation, recognition of danger signs and follow-up
 Hygienic cord care

Basic neonatal resuscitation
 Topical antimicrobials to prevent ophthalmia neonatorum

Weighing and initial clinical examination (History and physical examination for newborn)

Needle decompression

Surgical airway
 Diagnostic thoracentesis
 Therapeutic thoracentesis

COMMUNITY HEALTH

HEALTH POST

PRIMARY HEALTHCARE CLINIC

FIELD HOSPITAL (CAMP LEVEL)

Continuation from the page above

Management of complications during labour and childbirth

- Point of care testing
- Basic laboratory tests
- Blood and blood products transfusion
- Balloon tamponade for postpartum haemorrhage
- Amniotomy
- Membrane sweeping/stripping
- Repair of first and second degree perineal tear
- Repair of cervical laceration
- Oral prostaglandin analogues
- Vaginal prostaglandin analogues to induce labor
- Oral antihypertensives
- Intramuscular oxytocin
- Intramuscular antimicrobials for maternal peripartum infections
- Oral tocolytics
- Intramuscular antenatal corticosteroids
- Intravenous antihypertensives
- Intramuscular magnesium sulphate
- Intravenous magnesium sulphate
- Intravenous oxytocin
- Intravenous tranexamic acid (TXA)
- Intravenous antimicrobial prophylaxis for women with preterm rupture of membranes
- Intravenous antimicrobials for maternal peripartum infections
- Intravenous oxytocin for induction of labour
- Intravenous fluids

- Subtotal hysterectomy
- Total hysterectomy
- Caesarean section
- Forceps delivery
- Vacuum delivery

COMMUNITY HEALTH

HEALTH POST

PRIMARY HEALTHCARE CLINIC

FIELD HOSPITAL (CAMP LEVEL)

Routine care for postpartum women

Counselling and practical support for immediate initiation and establishment of exclusive breastfeeding
Counselling on family planning and contraception

Recognition of danger signs and follow-up (Referral to higher levels of care)

History and physical examination
Clinical assessment for postpartum depression and anxiety

Basic laboratory tests
Referral to higher levels of care
Monitor maternal vital signs
Oral analgesics

Routine care for newborn

History and physical examination

Care for neonatal complications

Early recognition of danger signs and illness with early referral

History and physical examination
Targeted history and physical examination of newborn for danger signs or signs of illness (Comprehensive eye examination (Custom Action))

Point of care testing
Basic laboratory tests

Pulse oximetry
Pre-referral stabilization and treatment of babies with danger signs or complications (Custom Action)

Phototherapy
Neonatal resuscitation
Nasogastric suction (Custom Action)
Supplemental oxygen
Oral antimicrobials
Oral analgesics
Oral antiseizures
Oral benzodiazepines
Intravenous fluids
Intravenous surfactant
Intravenous antimicrobials

Advanced laboratory tests

Oral and nasal airway placement (Custom Action)

Lumbar puncture
Blood and blood product transfusion
Intubation (Custom Action)

COMMUNITY HEALTH

HEALTH POST

PRIMARY HEALTHCARE CLINIC

FIELD HOSPITAL (CAMP LEVEL)

Continuation from the page above

Care for neonatal complications

- Intravenous analgesics
- Intravenous antiseizures
- Intravenous benzodiazepines
- Inhaled bronchodilators

COMMUNITY HEALTH

HEALTH POST

PRIMARY HEALTHCARE CLINIC

FIELD HOSPITAL (CAMP LEVEL)

Abortion related care

- History and physical examination
- Assessment of gestational age (Custom Action)
- Vaginal speculum examination (Custom Action)
- Self-management of medical abortion
- Counselling and support for abortion, miscarriage and intrauterine fetal death (Custom Action)
- Point of care testing
- Dilation and evacuation
- Manual vacuum aspiration
- Oral analgesics
- Oral antimicrobials
- Oral iron supplementation (Custom Action)
- Oral progesterone receptor antagonists
- Sublingual prostaglandins
- Intramuscular anti-D immunoglobulin
- Cervical priming with osmotic dilator
- IM/IV antimetabolite (Custom Action)
- IV iron (Custom Action)
- Post-abortion contraceptives (Custom Action)

Reproductive and sexual health | Pregnancy and birth | Abortion

[Return to H3 package overview](#) ←

COMMUNITY HEALTH

HEALTH POST

PRIMARY HEALTHCARE CLINIC

FIELD HOSPITAL (CAMP LEVEL)

Care for complications of abortion

Continuation from the page above

History and physical examination
Basic laboratory tests

Ultrasound
Blood and blood product transfusion
Surgical repair of genital trauma after abortion
Intravenous antimicrobials

Reproductive and sexual health | Pregnancy and birth | Ectopic pregnancy

COMMUNITY HEALTH

HEALTH POST

PRIMARY HEALTHCARE CLINIC

FIELD HOSPITAL (CAMP LEVEL)

Diagnosis of ectopic pregnancy

History and physical examination
Basic laboratory tests

Ultrasound

Management of ectopic pregnancy

Assessment of gestational age (Custom Action)

Oral iron supplementation (Custom Action)

Oral analgesics
Intravenous fluids

Blood and blood product transfusion
Laparotomy for ectopic pregnancy
Intravenous anti-D immunoglobulin
IV iron for anaemia (Custom Action)
Intramuscular antimetabolites

Reproductive and sexual health | Sexual health and family planning | Menstrual health

COMMUNITY HEALTH

HEALTH POST

PRIMARY HEALTHCARE CLINIC

FIELD HOSPITAL (CAMP LEVEL)

Promotion of menstrual health

Counselling on menarche
Counselling on menstruation
Counselling on painful bleeding

Reproductive and sexual health | Sexual health and family planning | Contraception and family planning

[Return to H3 package overview](#) ←

COMMUNITY HEALTH

HEALTH POST

PRIMARY HEALTHCARE CLINIC

FIELD HOSPITAL (CAMP LEVEL)

Screening, testing and counselling for family planning and contraception

Counselling on family planning and contraceptive methods and choice
Counselling on fertility awareness-based (FAB) method

History and physical examination
Point of care testing

Family planning and contraception

Male condoms

Intrauterine device (IUD)
Removal of subdermal contraceptive implant
Removal of intrauterine device (IUD)
Subdermal contraceptive implant
Oral hormonal contraceptives
Oral emergency contraceptives

Bilateral tubal ligation

Vasectomy

Reproductive and sexual health | Sexual health and family planning | Intimate partner and sexual violence (see also Violence section)

COMMUNITY HEALTH

HEALTH POST

PRIMARY HEALTHCARE CLINIC

FIELD HOSPITAL (CAMP LEVEL)

Prevention of intimate partner and sexual violence, including rape

Group education to raise awareness about violence against women and promote equal gender norms and relations

Care and support for survivors of intimate partner and sexual violence, including rape

Provide discrete materials with information about available services

Counselling and referral to address urgent safety needs, for safe abortion (Custom Action)
Education and advice on sexual functions and intimate relationships (Custom Action)

Safe and confidential documentation of sexual violence including medico-legal evidence

Continuation from the page above

Care and support for survivors of intimate partner and sexual violence, including rape

First-line support

Targeted history and complete physical examination, including documentation and evidence collection as appropriate for survivors of violence (History and physical examination for intimate partner violence)
History and physical examination
Clinical assessment for mental health disorders
Safe and confidential documentation of intimate partner violence
Oral antimicrobial prophylaxis
Post-exposure prophylaxis (PEP)
Oral emergency contraceptives
Intramuscular antimicrobial prophylaxis

Vaccination: Hepatitis B (Custom Action)
Vaccination: HPV (Custom Action)



Growth, development and ageing



Growth, development and ageing | Nutrition, physical activity and sleep | Healthy nutrition

[Return to H3 package overview](#) ←

COMMUNITY HEALTH

HEALTH POST

PRIMARY HEALTHCARE CLINIC

FIELD HOSPITAL (CAMP LEVEL)

Support for healthy nutrition

Counselling on nutrition, food safety, and healthy diet
Counselling on exposure to sunlight for vitamin D (Custom Action)

Growth, development and ageing | Nutrition, physical activity and sleep | Undernutrition

COMMUNITY HEALTH

HEALTH POST

PRIMARY HEALTHCARE CLINIC

FIELD HOSPITAL (CAMP LEVEL)

Assessment of nutritional status

History and physical examination

Management of undernutrition

Oral iron supplementation
Oral folic acid supplementation
Oral vitamin A supplementation

Oral calcium supplementation

Growth, development and ageing | Neonatal, infant, child and adolescent growth and development | Healthy growth and development in childhood and adolescence

COMMUNITY HEALTH

HEALTH POST

PRIMARY HEALTHCARE CLINIC

FIELD HOSPITAL (CAMP LEVEL)

Longitudinal assessment of growth and development

History and physical examination for healthy growth and development in childhood and adolescence
Anthropometric assessments
Counselling along with practical demonstration of exclusive breastfeeding
Counselling on continued breastfeeding and complementary feeding
Counselling on nutrition, food safety, and healthy diet

COMMUNITY HEALTH

HEALTH POST

PRIMARY HEALTHCARE CLINIC

FIELD HOSPITAL (CAMP LEVEL)

Continuation from the page above

Holistic palliative care assessment, planning and referrals

Holistic assessment of physical, psychological, spiritual and social needs

Palliative care for physical symptoms and needs

Mouth and skin care

Provide package of supplies for management of urinary and faecal incontinence

Assessment for pain and physical suffering in individuals with life limiting illness (Custom Action)

Oral antihistamines
 Oral analgesics
 Oral laxatives
 Oral antiemetics
 Oral antimicrobials
 Oral corticosteroids
 Oral opioids

Urinary catheter placement

Intramuscular opioid antagonists

Therapeutic thoracentesis
 Therapeutic paracentesis



**Noncommunicable
diseases
and mental health**

Noncommunicable diseases and mental health | Cancers | Cervical cancer

[Return to H3 package overview](#) ←

COMMUNITY HEALTH

HEALTH POST

PRIMARY HEALTHCARE CLINIC

FIELD HOSPITAL (CAMP LEVEL)

Screening and early detection of pre-invasive cervical cancer

Visual inspection with acetic acid (VIA)
Cytology (pap smear or liquid-based cytology)

Noncommunicable diseases and mental health | Cardiovascular diseases | Cardiovascular risks

COMMUNITY HEALTH

HEALTH POST

PRIMARY HEALTHCARE CLINIC

FIELD HOSPITAL (CAMP LEVEL)

Assessment of cardiovascular risks

Blood pressure measurement and assessment
History and physical examination
Point of care testing
Basic laboratory tests

Noncommunicable diseases and mental health | Cardiovascular diseases | Hypertension

COMMUNITY HEALTH

HEALTH POST

PRIMARY HEALTHCARE CLINIC

FIELD HOSPITAL (CAMP LEVEL)

Prevention of hypertension

Integrated counselling on healthy diet, physical activity, weight management, and alcohol and tobacco use

Longitudinal management of hypertension

Condition-specific nutrition assessment and counselling
Oral ACE inhibitors
Oral angiotensin II receptor blockers
Oral calcium channel blockers
Oral thiazide and thiazide-like diuretics
Oral beta blockers (Custom Action)

COMMUNITY HEALTH

HEALTH POST

PRIMARY HEALTHCARE CLINIC

FIELD HOSPITAL (CAMP LEVEL)

Continuation from the page above

Screening and diagnosis of hypertension

History and physical examination

Basic laboratory tests

Management of hypertensive urgencies and emergencies

Electrocardiogram (ECG)

Intravenous adrenergic inhibitors
Intravenous vasodilators

Noncommunicable diseases and mental health | Cardiovascular diseases | Ischaemic heart disease

COMMUNITY HEALTH

HEALTH POST

PRIMARY HEALTHCARE CLINIC

FIELD HOSPITAL (CAMP LEVEL)

Prevention of ischaemic heart disease

Brief behavioural counselling on tobacco cessation
Integrated counselling on healthy diet, physical activity, weight management, and alcohol and tobacco use

Screening and diagnosis of ischaemic heart disease

History and physical examination
Point of care testing
Basic laboratory tests
Advanced laboratory tests
Electrocardiogram (ECG)

Longitudinal management of ischaemic heart disease

Condition-specific nutrition assessment and counselling

Oral ACE inhibitors
Oral antiplatelets
Oral beta blockers
Oral nitrates
Oral statins

Noncommunicable diseases and mental health | Cardiovascular diseases | Ischaemic heart disease

[Return to H3 package overview](#) ←

COMMUNITY HEALTH

HEALTH POST

PRIMARY HEALTHCARE CLINIC

FIELD HOSPITAL (CAMP LEVEL)

Continuation from the page above

Management of acute ischaemic heart disease

Supplemental oxygen
Oral beta blockers
Oral nitrates
Oral statins
Oral ACE inhibitors
Oral anti-platelet

Management of acute ischaemic heart disease

Intravenous analgesics
Intravenous diuretics

Intravenous thrombolytic
Intravenous nitrates

Intravenous anticoagulants

Rehabilitation for ischaemic heart disease

Physical exercise training
Exercise therapy and exercise prescription
to improve or maintain cardiovascular
fitness (Physical exercise training)

Noncommunicable diseases and mental health | Cardiovascular diseases | Cerebrovascular disease

COMMUNITY HEALTH

HEALTH POST

PRIMARY HEALTHCARE CLINIC

FIELD HOSPITAL (CAMP LEVEL)

Prevention of stroke

Brief behavioural counselling on tobacco
cessation
Integrated counselling on healthy diet,
physical activity, weight management, and
alcohol and tobacco use

Early identification and diagnosis of stroke

History and physical examination
Point of care testing

Electrocardiogram (ECG)

Echocardiogram

Noncommunicable diseases and mental health | Cardiovascular diseases |

Cerebrovascular disease

[Return to H3 package overview](#) ←

COMMUNITY HEALTH

HEALTH POST

PRIMARY HEALTHCARE CLINIC

FIELD HOSPITAL (CAMP LEVEL)

Continuation from the page above

Longitudinal management of stroke

Oral antihypertensives
Oral antiplatelets
Oral statins

Management of acute stroke

Oral antiplatelets
Oral anticoagulants
Intravenous insulin

Noncommunicable diseases and mental health | Chronic respiratory diseases | Chronic obstructive pulmonary disease

COMMUNITY HEALTH

HEALTH POST

PRIMARY HEALTHCARE CLINIC

FIELD HOSPITAL (CAMP LEVEL)

Continuation from the page above

Screening and diagnosis of COPD

History and physical examination
Pulse oximetry
Peak flow measurement

X-ray

Management of acute exacerbation of COPD

Multidose inhaler with antimuscarinics, used with spacer
Multidose inhaler with beta agonists, used with spacer
Nebulized antimuscarinics
Nebulized beta agonists
Oral antimicrobials
Oral corticosteroids
Supplemental oxygen

Intravenous antimicrobials
Intravenous corticosteroids

Noncommunicable diseases and mental health | Chronic respiratory diseases | Chronic obstructive pulmonary disease

[Return to H3 package overview](#) ←

COMMUNITY HEALTH

HEALTH POST

PRIMARY HEALTHCARE CLINIC

FIELD HOSPITAL (CAMP LEVEL)

Continuation from the page above

Management of acute exacerbation of COPD

Supplemental oxygen
Inhaled beta agonists

Inhaled antimuscarinics

Noncommunicable diseases and mental health | Chronic respiratory diseases | Asthma

COMMUNITY HEALTH

HEALTH POST

PRIMARY HEALTHCARE CLINIC

FIELD HOSPITAL (CAMP LEVEL)

Continuation from the page above

Prevention of asthma

Integrated counselling on healthy diet, physical activity, weight management, and alcohol and tobacco use

Screening and diagnosis of asthma

History and physical examination
Pulse oximetry
Peak flow measurement

X-ray

Management of acute exacerbation of asthma

Supplemental oxygen
Oral corticosteroids
Metered-dose inhaler with antimuscarinics, used with spacer
Metered-dose inhaler with beta agonists, used with spacer
Nebulized antimuscarinics
Nebulized beta agonists

Longitudinal management of asthma

Counselling on personalised asthma management plan
Inhaled beta agonists
Inhaled corticosteroids
Oral corticosteroids

Noncommunicable diseases and mental health | Digestive diseases (see also communicable diseases) | Oral diseases and conditions

[Return to H3 package overview](#) ←

COMMUNITY HEALTH

HEALTH POST

PRIMARY HEALTHCARE CLINIC

FIELD HOSPITAL (CAMP LEVEL)

Continuation from the page above

Prevention of oral diseases

Counselling on daily oral hygiene including toothbrushing with fluoride toothpaste

Screening and diagnosis of oral diseases

History and physical examination

X-ray

Longitudinal management of oral diseases

Glass ionomer cement restoration
Simple composite resin restorations

Provide saline or disinfectant mouthwash

Management of acute exacerbations of oral diseases

Oral analgesics
Oral antimicrobials
Antimicrobials in oral suspension (Custom Action)
Analgesics in oral suspension (Custom Action)

Simple tooth extraction

Complex or multiple teeth extraction
Incision and drainage

Noncommunicable diseases and mental health | Digestive diseases (see also communicable diseases) | Diseases of the oesophagus, stomach, liver, gallbladder, pancreas and intestines

COMMUNITY HEALTH

HEALTH POST

PRIMARY HEALTHCARE CLINIC

FIELD HOSPITAL (CAMP LEVEL)

Continuation from the page above

Prevention of gastrointestinal diseases

Counselling on daily oral hygiene including toothbrushing
Condition-specific nutrition assessment and counselling
fluoride toothpaste

Noncommunicable diseases and mental health | Digestive diseases (see also communicable diseases) | Diseases of the oesophagus, stomach, liver, gallbladder, pancreas and intestines

[Return to H3 package overview](#) ←

COMMUNITY HEALTH

HEALTH POST

PRIMARY HEALTHCARE CLINIC

FIELD HOSPITAL (CAMP LEVEL)

Continuation from the page above

Screening and diagnosis of gastrointestinal diseases

History and physical examination
Point of care testing
Basic laboratory tests

Advanced laboratory tests
Ultrasound

X-ray
Paracentesis

Management of gastroesophageal reflux disease

Oral H2 receptor antagonist
Oral proton pump inhibitors
Intravenous proton pump inhibitors

Management of gastritis, peptic ulcer disease and duodenitis

Oral antimicrobials
Oral H2 receptor antagonists
Oral proton pump inhibitors
Intravenous antiemetics
Intravenous fluids

Blood and blood product transfusion

Management of ileus and intestinal obstruction

Nasogastric suction
Intramuscular analgesics
Intravenous analgesics
Intravenous antimicrobials
Intravenous fluids

Surgical procedures for bowel obstruction

Management of appendicitis

Intravenous analgesics
Intravenous antimicrobials
Intravenous fluids

Open appendectomy

Management of hernias (inguinal, femoral, abdominal)

Intravenous analgesics
Intravenous antimicrobials

Nasogastric suction

Hernioplasty

Noncommunicable diseases and mental health | Digestive diseases (see also communicable diseases) | Diseases of the oesophagus, stomach, liver, gallbladder, pancreas and intestines

[Return to H3 package overview](#) ←

COMMUNITY HEALTH

HEALTH POST

PRIMARY HEALTHCARE CLINIC

FIELD HOSPITAL (CAMP LEVEL)

Continuation from the page above

Management of gallbladder and biliary diseases

Oral analgesic
Intramuscular analgesic
Intravenous analgesic

Intravenous antimicrobials

Management of pancreatitis

Nasogastric suction
Oral analgesics
Oral antimicrobials
Intravenous analgesics
Intravenous antimicrobials
Intravenous fluids

Management of gastrointestinal bleeding

Oral proton pump inhibitors
Intravenous analgesics
Intravenous fluids
Intravenous proton pump inhibitors

Blood and blood product transfusion

Surgical procedures for ulcer or perforation: laparotomy

Management of ascites and acute complications

Diagnostic paracentesis
Therapeutic paracentesis

Oral antimicrobials
Oral diuretics
Intravenous antimicrobials
Intravenous diuretics

COMMUNITY HEALTH

HEALTH POST

PRIMARY HEALTHCARE CLINIC

FIELD HOSPITAL (CAMP LEVEL)

Continuation from the page above

Prevention of diabetes mellitus

Integrated counselling on healthy diet, physical activity, weight management, and alcohol and tobacco use

Screening and diagnosis of diabetes mellitus

History and physical examination
Point of care testing

Basic laboratory tests (RBS, FBS & HbA1C)

Management of hyperglycaemic and hypoglycaemic emergencies

Provide oral glucose solution
Intravenous fluids
Intravenous insulin in acute hyperglycaemia
IV glucose (Custom Action)

Subcutaneous insulin
Intravenous glucose

IV potassium (Custom Action)

Longitudinal management of diabetes

Condition-specific nutrition assessment and counselling

Counselling on home glucose monitoring
Counselling on insulin use (Custom Action)
Counselling on foot care
Provision of syringes (Custom Action)
Provision of blood glucose monitoring device and test strips
Diabetic foot examination
Direct ophthalmoscopy
Test for visual acuity
Indirect ophthalmoscopy
Oral hypoglycaemics
Oral statins
Oral ACE inhibitor
Oral ARBs
Subcutaneous insulin

Noncommunicable diseases and mental health | Endocrine, metabolic, and autoimmune disorders | Thyroid disorders

[Return to H3 package overview](#) ←

COMMUNITY HEALTH

HEALTH POST

PRIMARY HEALTHCARE CLINIC

FIELD HOSPITAL (CAMP LEVEL)

Screening and diagnosis of thyroid disorders

History and physical examination

Basic laboratory tests

Advanced laboratory tests

Management of thyroid disorders

Condition-specific nutrition assessment and counselling

Oral iodine

Oral beta-adrenergic blockers
Oral levothyroxine

Intravenous beta-adrenergic blockers

Noncommunicable diseases and mental health | Genitourinary disorders | Noninfectious disorders of female genital tract

COMMUNITY HEALTH

HEALTH POST

PRIMARY HEALTHCARE CLINIC

FIELD HOSPITAL (CAMP LEVEL)

Management of pelvic organ prolapse

Pelvis floor muscle training (Custom Action)

Ultrasound

Surgery for pelvic organ prolapse
Pessary for pelvic organ prolapse (Custom Action)

Noncommunicable diseases and mental health | Mental disorders | Depression

[Return to H3 package overview](#) ←

COMMUNITY HEALTH

HEALTH POST

PRIMARY HEALTHCARE CLINIC

FIELD HOSPITAL (CAMP LEVEL)

Continuation from the page above

Assessment of depression

Assessment of self-harm and suicide risk in people with mental, neurological, and substance use conditions
History and physical examination

Medical evaluation, including laboratory testing, for alternative diagnoses (Basic laboratory tests)

Management of depression

Psychoeducation to reduce stress and strengthen social support (Psychoeducation and psychosocial support (including for patient's carers))
Psychoeducation to promote functioning and activities for daily living in the community in people with mental health conditions (Custom Action)
Basic psychosocial support for people with mental health conditions and their caretakers (Custom Action)

Assessment of suicide risk and appropriate referral for services when needed (Custom Action)

Provide cognitive behavioural therapy or interpersonal therapy

Referral for specialized mental health and other needed services when needed
Oral antidepressants

Noncommunicable diseases and mental health | Mental disorders | Anxiety disorders (including PTSD)

COMMUNITY HEALTH

HEALTH POST

PRIMARY HEALTHCARE CLINIC

FIELD HOSPITAL (CAMP LEVEL)

Assessment of anxiety disorders

Assessment of self-harm and suicide risk in people with mental, neurological, and substance use conditions

History and physical examination

Medical evaluation, including laboratory testing, for alternative diagnoses (Basic laboratory tests)

Advanced laboratory tests

Noncommunicable diseases and mental health | Mental disorders | Anxiety disorders (including PTSD)

[Return to H3 package overview](#) ←

COMMUNITY HEALTH

HEALTH POST

PRIMARY HEALTHCARE CLINIC

FIELD HOSPITAL (CAMP LEVEL)

Continuation from the page above

Management of anxiety disorders

Psychoeducation to reduce stress and strengthen social support (Psychoeducation and psychosocial support (including for patient's carers))

Psychoeducation to promote functioning and activities for daily living in the community in people with mental health conditions (Custom Action)

Basic psychosocial support for people with mental health conditions and their caretakers (Custom Action)

Psychological first aid for recent exposure to traumatic stressors (Custom Action)

Referral for specialized mental health and other needed services

Provide cognitive behavioural therapy or interpersonal therapy

Oral antidepressants for second-line treatment for PTSD

Oral antidepressants for generalized anxiety disorder and panic disorder

Noncommunicable diseases and mental health | Mental disorders | Psychotic disorders

Assessment of psychotic disorders

Assessment of suicide risk and appropriate referral for services when needed (Assessment of self-harm and suicide risk in people with mental, neurological, and substance use conditions)

Referral for mental health and other needed services (protection, livelihoods) (Referral for self-harm and suicide risk in people with mental, neurological, and substance use conditions)

History and physical examination

Basic laboratory tests

COMMUNITY HEALTH

HEALTH POST

PRIMARY HEALTHCARE CLINIC

FIELD HOSPITAL (CAMP LEVEL)

Continuation from the page above

Management of psychotic disorders

Psychoeducation to reduce stress and strengthen social support (Psychoeducation and psychosocial support (including for patient's carers))
 Psychoeducation to promote functioning and activities for daily living in the community in people with mental health conditions (Custom Action)
 Basic psychosocial support for people with mental health conditions and their caretakers (Custom Action)

Maintenance treatment for chronic psychosis, including long-acting anti-psychotic medications (Custom Action)
 Maintenance treatment for chronic psychosis, including long-acting anti-psychotic medications (Custom Action)

Provide cognitive behavioural therapy or interpersonal therapy for psychotic disorders

Oral anticholinergic medications
 Intramuscular antipsychotics
 Oral antipsychotics

Intravenous antipsychotics

Noncommunicable diseases and mental health | Mental disorders | Bipolar disorders

COMMUNITY HEALTH

HEALTH POST

PRIMARY HEALTHCARE CLINIC

FIELD HOSPITAL (CAMP LEVEL)

Assessment of bipolar disorder

Assessment of self-harm and suicide risk in people with mental, neurological, and substance use conditions

History and physical examination

Medical evaluation, including laboratory testing, for alternative diagnoses (Basic laboratory tests)

Management of bipolar disorders

Basic psychosocial support for people with mental health conditions and their caretakers (Psychoeducation and psychosocial support (including for patient's carers))
 Referral for self-harm and suicide risk in people with mental, neurological, and substance use conditions

Provide cognitive behavioural therapy or interpersonal therapy for bipolar disorders

Oral anticholinergic medications
 Oral mood stabilizer
 Oral antipsychotics
 Oral anticonvulsants

COMMUNITY HEALTH

HEALTH POST

PRIMARY HEALTHCARE CLINIC

FIELD HOSPITAL (CAMP LEVEL)

Continuation from the page above

Assessment of self-harm/suicide risk

Assessment of self-harm and suicide risk in people with mental, neurological, and substance use conditions
History and physical examination of those who attempted suicide and self-harmed for other mental and physical health conditions

Management of self-harm / suicide risk

Psychosocial support for caregivers

Assessment of suicide risk and appropriate referral for services when needed (Referral for self-harm and suicide risk in people with mental, neurological, and substance use conditions)

Noncommunicable diseases and mental health | Child and adolescent mental health |

Promotive and preventive mental health services for adolescents

COMMUNITY HEALTH

HEALTH POST

PRIMARY HEALTHCARE CLINIC

FIELD HOSPITAL (CAMP LEVEL)

Promotive and preventive mental health services for adolescents

Problem solving and interpersonal skills training for adolescent

Management of emotional problems and disorders in children and adolescents

Support and carer skills training for carers of children and adolescents with developmental disabilities (Caregiver skills training)
Basic psychosocial support for people with mental health conditions and their caretakers (Psychoeducation for patients and caregivers)

Psychosocial interventions for children and adolescents with emotional disorders

Referral for specialized mental health and other needed services

Oral fluoxetine for moderate to severe depression in adolescents

COMMUNITY HEALTH

HEALTH POST

PRIMARY HEALTHCARE CLINIC

FIELD HOSPITAL (CAMP LEVEL)

Continuation from the page above

Screening and diagnosis of alcohol use disorders

History and physical examination
Systematic screening for substance use among at risk population
Basic laboratory tests

Screening and diagnosis of drug use disorders

History and physical examination

COMMUNITY HEALTH

HEALTH POST

PRIMARY HEALTHCARE CLINIC

FIELD HOSPITAL (CAMP LEVEL)

Screening and diagnosis of epilepsy

Continuation from the page above

History and physical examination

Basic laboratory tests

Electrocardiogram (ECG)
Lumbar puncture

Management of epilepsy and seizures

Counselling on avoiding high risk activities
(Custom Action)

Education of family members on first aid
(Custom Action)

Psychoeducation and psychosocial support
(including for patient's carers)

Initial resuscitation and stabilization after seizure (Custom Action)
Intramuscular benzodiazepines
Oral antiseizures
Oral antipyretics
Oral benzodiazepines (Custom Action)
Oral glucose (Custom Action)

Intravenous benzodiazepines
IV antiepileptics (Custom Action)
IV antipyretics (Custom Action)
IV glucose (Custom Action)

Screening and diagnosis of eye diseases and vision impairment

Test for visual acuity

Tonometry
Slit lamp examination

Management of refractive error, amblyopia and strabismus

Provide spectacles

Screening and diagnosis of inflammatory skin disorders

History and physical examination

Management of dermatitis (atopic, contact, seborrheic)

Oral corticosteroids
Topical antifungals
Topical corticosteroids
Topical emollients
Oral antihistamines (Custom Action)



Violence and injury

COMMUNITY HEALTH

HEALTH POST

PRIMARY HEALTHCARE CLINIC

FIELD HOSPITAL (CAMP LEVEL)

Continuation from the page above

Prevention and early recognition of violence

Clinical assessment for signs of neglect, maltreatment or abuse (History and complete physical examination for survivors of violence, including documentation and evidence collection as appropriate)

Safe and confidential access to health services for conditions related to violence

Basic psychosocial support including stress reduction techniques (First line support)
 Provide first-line support
 Identification and documentation of signs and symptoms of maltreatment (Document signs and symptoms of child maltreatment)
 Psychological first aid for recent exposure to trauma (Custom Action)
 Referral for the management of mental illness
 Referral to address urgent safety needs

Identification of child maltreatment and youth violence

Clinical assessment for signs of neglect, maltreatment or abuse (History and physical examination for child maltreatment and youth violence)

Management of child maltreatment and youth violence

Referral for the management of mental illness
 Counselling and referral to address urgent safety needs (Custom Action)

Referrals to other health services and support services for survivors of violence (Custom Action)

COMMUNITY HEALTH

HEALTH POST

PRIMARY HEALTHCARE CLINIC

FIELD HOSPITAL (CAMP LEVEL)

Continuation from the page above

Identification of violence against older people

Identification and documentation of signs and symptoms of maltreatment (Custom Action)

Clinical assessment for signs of neglect, maltreatment or abuse (History and physical examination for neglect, maltreatment or abuse)

Management of violence against older people

Psychoeducation and psychosocial support (including for patient's carers)
Psychological first aid for recent exposure to trauma

Clinical assessment for mental disorders in older people

Referral to address urgent safety needs
Referral for the management of mental illness

Referrals to other health services and support services for survivors of violence (Referral to social care services)

COMMUNITY HEALTH

HEALTH POST

PRIMARY HEALTHCARE CLINIC

FIELD HOSPITAL (CAMP LEVEL)

Continuation from the page above

Counselling for injury prevention

Counselling on safety and injury prevention
Counselling on vehicular child restraint and road safety behaviors

General approach to serious injury

<p>Perform temperature management including non-invasive cooling and warming</p>	<p>History and physical examination</p>	<p>Basic laboratory tests</p>	<p>X-ray Point of care ultrasound</p>
<p>Wound care External haemorrhage control including tourniquet application and haemostatic agents (Custom Action)</p>	<p>Spine immobilization Pelvic binding Suture repair of lacerations Surgical wound debridement Manual airway repositioning (Basic airway management) Oral and nasal airway placement (Basic airway management) Continuous vital sign monitoring Supplemental oxygen Oral volume resuscitation Oral antimicrobials Oral analgesia Intramuscular analgesia Intramuscular anxiolysis Intramuscular tetanus toxoid Topical analgesia Intravenous analgesics Intravenous fluids</p>	<p>Intravenous antimicrobials Intravenous anxiolytics Intravenous antithrombolytic Intravenous sedatives</p>	<p>Blood and blood product transfusion Bag-valve-mask ventilation Endotracheal intubation Surgical airway Intranasal analgesia Intranasal anxiolysis</p>

Management of head and face injury (including ocular injury)

<p>Oral antimicrobials Intramuscular tetanus toxoid</p>	<p>Intravenous antimicrobials Intravenous osmotic medications to reduce intracranial pressure</p>
---	---

COMMUNITY HEALTH

HEALTH POST

PRIMARY HEALTHCARE CLINIC

FIELD HOSPITAL (CAMP LEVEL)

Continuation from the page above

Management of head and face injury (including ocular injury)

Irrigation and debridement
Suture repair of head and facial lacerations

Burr hole

Management of spinal injury (including neck injury)

Spine immobilization
Intravenous fluids

Management of thoracoabdominal injury

Wound care

Electrocardiogram (ECG)

Intravenous antimicrobials for penetrating abdominal injury requiring surgery

Point of care ultrasound

Blood and blood product transfusion
Diagnostic peritoneal lavage

Management of pelvic injury (including urogenital)

Wound care

Speculum examination
Pelvic binding

External haemorrhage control with tourniquet application

Point of care ultrasound

Blood and blood product transfusion

Management of extremity injury

External dislocation reduction
External fracture fixation
Fasciotomy
Internal fracture fixation
Irrigation and debridement for open fractures
Nonoperative reduction and immobilization
Operative soft tissue repair
Pelvic binding
Provision of orthotics and prosthetics
Splinting
Surgical management of amputation
Traction
Wound care
Positioning and active and passive movements to prevent complications (Custom Action)

Violence and injury | Injury | Mechanical injury

[Return to H3 package overview](#) ←

COMMUNITY HEALTH

HEALTH POST

PRIMARY HEALTHCARE CLINIC

FIELD HOSPITAL (CAMP LEVEL)

Management of wounds (excluding burns)

Continuation from the page above

Home wound care

Outpatient wound care
Foreign body removal
Suture repair of laceration
Intramuscular tetanus toxoid

Violence and injury | Injury | Thermal and chemical injuries (burns)

COMMUNITY HEALTH

HEALTH POST

PRIMARY HEALTHCARE CLINIC

FIELD HOSPITAL (CAMP LEVEL)

Counselling for prevention of burns

Counselling for prevention of burns

Management of burns

Home wound care

Clinical assessment of burns
Point of care testing
Basic laboratory tests
Decontamination
Outpatient wound care
Basic airway management

Supplemental oxygen
Dressings for superficial and partial thickness burns
Intramuscular tetanus toxoid

Surgical wound debridement (Wound debridement)

Escharotomy
Foreign body removal
Bag-valve-mask ventilation
Endotracheal intubation
Surgical airway

Violence and injury | Injury | Envenomation injuries

COMMUNITY HEALTH

HEALTH POST

PRIMARY HEALTHCARE CLINIC

FIELD HOSPITAL (CAMP LEVEL)

Continuation from the page above

Counselling for prevention of bite and envenoming injuries

Counselling on prevention of bite and envenoming injuries

Management of bites and envenoming injuries

Wound care

Intramuscular rabies immunoglobulin
 Intramuscular tetanus toxoid
 Oral antihistamines (Custom Action)
 Oral corticosteroids (Custom Action)

 IV fluids (Custom Action)

IV antihistamines (Custom Action)
 IV corticosteroids (Custom Action)

Intramuscular rabies vaccine
 Intramuscular tetanus immunoglobulin
 Intravenous antivenin

Violence and injury | Injury | Environmental exposures (including drowning)

COMMUNITY HEALTH

HEALTH POST

PRIMARY HEALTHCARE CLINIC

FIELD HOSPITAL (CAMP LEVEL)

Continuation from the page above

Prevention of environmental exposures (including drowning)

Counselling on household safety for infants and young children
 Counselling on water safety

Management of environmental exposures (including drowning)

Decontamination

Temperature management including non-pharmacologic cooling and warming

 Oral electrolytes
Supplemental oxygen

Intravenous fluids
Intravenous antiseizures
Intravenous benzodiazepines

COMMUNITY HEALTH

HEALTH POST

PRIMARY HEALTHCARE CLINIC

FIELD HOSPITAL (CAMP LEVEL)

Continuation from the page above

Prevention of poisoning and toxic exposures

Counselling on household safety for infants and young children

Diagnosis of poisoning and toxic exposures

Decontamination

Pulse oximetry
Electrocardiogram (ECG)

Point of care testing
Basic laboratory tests
Advanced laboratory tests
X-ray

Management of poisoning and toxic exposures

Temperature management including non-pharmacologic cooling and warming

Basic airway management
Endotracheal intubation
Defibrillation
Supplemental oxygen
Oral antidotes and reversal medications
Oral antipyretics
Oral electrolytes

Intravenous fluids
Intravenous antiseizures
Intravenous benzodiazepines



Communicable diseases

Communicable diseases | Communicable diseases (excluding NTDs) | HIV

[Return to H3 package overview](#) ←

COMMUNITY HEALTH

HEALTH POST

PRIMARY HEALTHCARE CLINIC

FIELD HOSPITAL (CAMP LEVEL)

Continuation from the page above

Prevention of HIV

Counselling on safe sex, risk reduction and condoms
Male condoms

Counselling on partner notification, diagnosis and treatment
Post-exposure prophylaxis (PEP)
Pre-exposure prophylaxis (PrEP)

Voluntary medical male circumcision (VMMC)

Screening and diagnosis of HIV

History and physical examination
Point of care testing

Management of HIV

Condition-specific nutrition assessment and counselling
Tuberculosis preventive therapy (TPT) - Refer to ART Center
Oral antimicrobials for prevention of opportunistic infections in HIV - Refer to ART Center
Oral antiretrovirals (ARVs) for first line treatment - Refer to ART Center
Oral antiretrovirals (ARVs) for second or third line treatment - Refer to ART Center

Communicable diseases | Communicable diseases (excluding NTDs) | Tuberculosis

COMMUNITY HEALTH

HEALTH POST

PRIMARY HEALTHCARE CLINIC

FIELD HOSPITAL (CAMP LEVEL)

Continuation from the page above

Prevention of tuberculosis

Conduct active case finding for TB among at-risk populations
Perform routine contact tracing to identify individuals exposed to TB

Vaccination: BCG

Communicable diseases | Communicable diseases (excluding NTDs) | Tuberculosis

[Return to H3 package overview](#) ←

COMMUNITY HEALTH

HEALTH POST

PRIMARY HEALTHCARE CLINIC

FIELD HOSPITAL (CAMP LEVEL)

Continuation from the page above

Case detection of tuberculosis

Screening for tuberculosis among clinical at risk groups and vulnerable populations to exclude active TB disease

Diagnosis of tuberculosis

History and physical examination

Basic laboratory tests
Ultrasound

X-ray

Communicable diseases | Communicable diseases (excluding NTDs) | Malaria

COMMUNITY HEALTH

HEALTH POST

PRIMARY HEALTHCARE CLINIC

FIELD HOSPITAL (CAMP LEVEL)

Continuation from the page above

Screening and diagnosis malaria

History and physical examination
Point of care testing
Basic laboratory tests

Management of malaria

Clinical assessment for danger signs and early referral (Custom Action)

Oral glucose (or glucose-containing food/liquid) (Custom Action)

Oral antimalarials
Oral antimalarials for treatment completion of severe malaria
Oral and rectal antipyretics (Oral antipyretics for malaria)
Rectal antimalarials for pre-referral empiric therapy
Intramuscular antimalarials for pre-referral empiric therapy
Supplemental oxygen (Custom Action)

Intravenous antimalarials for initial phase of severe malaria
Intravenous glucose for hypoglycaemia
IV antipyretics (Custom Action)

Blood and blood product transfusion

COMMUNITY HEALTH

HEALTH POST

PRIMARY HEALTHCARE CLINIC

FIELD HOSPITAL (CAMP LEVEL)

Continuation from the page above

Prevention of lower respiratory infections

Counselling on WASH activities including clean drinking water, sanitation and hygiene

Vaccination: COVID-19
 Vaccination: diphtheria-tetanus-pertussis-containing vaccines (DTaP) for infants
 Vaccination: haemophilus influenzae type b (Hib)
 Vaccination: measles
 Vaccination: pneumococcal conjugate
 Vaccination: seasonal influenza
 Vaccination: BCG

Appropriate isolation for high-risk communicable diseases (Custom Action)

Screening and diagnosis of lower respiratory infections

Clinical assessment for danger signs and early referral (Clinical assessment for early recognition of need for referral)

Pulse oximetry
 History and physical examination
 Point of care testing

Isolation for high risk communicable diseases

Basic laboratory tests
 Advanced laboratory tests

X-ray

Management of acute lower respiratory infections

Supplemental oxygen
 Inhaled bronchodilators
 Oral antimicrobials
 Oral antipyretics
 Oral corticosteroids
 Intramuscular antimicrobials
 Intravenous antimicrobials

Intubation and mechanical ventilation (Invasive mechanical ventilation)

Inhaled beta agonist
 Intravenous corticosteroids

Therapeutic thoracentesis
 Intubation (Custom Action)
 Non-invasive mechanical ventilation
 Nebulized medications

COMMUNITY HEALTH

HEALTH POST

PRIMARY HEALTHCARE CLINIC

FIELD HOSPITAL (CAMP LEVEL)

Continuation from the page above

Prevention of enteric infections

Counselling on WASH services (use of safe water supply; sanitation and hygiene)
Condition-specific nutrition assessment and counselling

Screening and diagnosis of enteric infections

History and physical examination
Point of care testing

Management of enteric infections

Referral to health facility for the management of sever dehydration
Oral zinc supplementation
Oral rehydration solution
Oral antimicrobials
Intramuscular antimicrobials agents

Intravenous fluids

Prevention of cholera

Counselling about handwashing with soap
Counselling on WASH services (use of safe water supply; sanitation and hygiene)

Screening and diagnosis of cholera

Point of care testing - Applicable at Sentinel Sites
History and physical examination

Management of cholera

Oral rehydration solution
Oral antipyretics
Oral antimicrobials
Oral Zinc supplementation

Intravenous fluids
Intravenous glucose

Communicable diseases | Communicable diseases (excluding NTDs) | Sexually transmitted and reproductive tract infections

[Return to H3 package overview](#) ←

COMMUNITY HEALTH

HEALTH POST

PRIMARY HEALTHCARE CLINIC

FIELD HOSPITAL (CAMP LEVEL)

Continuation from the page above

Prevention of STIs and reproductive tract infections

Counselling on STI prevention, risk reduction, and safer sex
Promote and provide female condoms
Promote and provide male condoms

Post-exposure prophylaxis (PEP) for STIs
Risk assessment with sexual history and risk factors

Voluntary medical male circumcision (VMMC) (Custom Action)

Screening and diagnosis of STIs and reproductive tract infections

Point of care testing
Basic laboratory tests
Speculum examination
Syndromic diagnosis of STIs (History and physical examination for sexually transmitted and reproductive tract infections)
History and physical examination
Genital examination including specimen collection
Bimanual examination

Counselling on self-collection of samples for STI laboratory testing

Anoscopy

Management of STIs and reproductive tract infections

Counselling on self-collection of samples for STI laboratory testing
Oral antimicrobials
Intramuscular antimicrobials
Vaginal antimicrobials
Oral analgesics

Communicable diseases | Communicable diseases (excluding NTDs) | Urinary tract infections

COMMUNITY HEALTH

HEALTH POST

PRIMARY HEALTHCARE CLINIC

FIELD HOSPITAL (CAMP LEVEL)

Screening and diagnosis of urinary tract infections

History and physical examination
Point of care testing

Basic laboratory tests
Advanced laboratory tests

Ultrasound

Communicable diseases | Communicable diseases (excluding NTDs) | Urinary tract infections

[Return to H3 package overview](#) ←

COMMUNITY HEALTH

HEALTH POST

PRIMARY HEALTHCARE CLINIC

FIELD HOSPITAL (CAMP LEVEL)

Continuation from the page above

Management of urinary tract infections

Intramuscular antimicrobials
Oral analgesics
Oral antimicrobials
Oral antipyretics

Transurethral catheterization (Custom Action)

Intravenous antimicrobials
Intravenous antipyretics
Transurethral catheterization (Custom Action)

Suprapubic catheterization (Custom Action)

Communicable diseases | Communicable diseases (excluding NTDs) | Central nervous system (CNS) infections

COMMUNITY HEALTH

HEALTH POST

PRIMARY HEALTHCARE CLINIC

FIELD HOSPITAL (CAMP LEVEL)

Management of brain abscess and encephalitis

Oral antimicrobials chemoprophylaxis for contacts

Screening and diagnosis of meningitis

History and physical examination
Clinical assessment for early recognition of the need for referral

Basic laboratory tests

Advanced laboratory tests
Lumbar puncture

Management of meningitis

Intravenous antimicrobials for meningitis
Intravenous antiseizures for meningitis
Intravenous corticosteroids for meningitis

Communicable diseases | Communicable diseases (excluding NTDs) | Ear, nose, and throat (ENT) infections

[Return to H3 package overview](#) ←

COMMUNITY HEALTH

HEALTH POST

PRIMARY HEALTHCARE CLINIC

FIELD HOSPITAL (CAMP LEVEL)

Screening and diagnosis of ENT infections

Continuation from the page above

History and physical examination
Otoscopy
Basic laboratory tests

X-ray

Management of ENT infections

Nasal decongestants
Oral antihistamines
Oral antimicrobials for ENT infections
Oral analgesics
Intranasal corticosteroids for ENT infections

Intravenous analgesics
Intravenous antimicrobials for ENT infections

Management of ear infections and complications

Dry wicking
Intramuscular antimicrobials
Intranasal corticosteroids
Oral analgesics
Oral antimicrobials
Topical antimicrobials

Intravenous analgesics
Intravenous antimicrobials for ear infections

Communicable diseases | Communicable diseases (excluding NTDs) | Eye infections

COMMUNITY HEALTH

HEALTH POST

PRIMARY HEALTHCARE CLINIC

FIELD HOSPITAL (CAMP LEVEL)

Prevention of eye infections

Counselling on WASH activities including clean drinking water, sanitation and hygiene

Screening and diagnosis of eye infections

Slit lamp examination - Available at Eye Clinics
Tonometry - Available at Eye Clinics
Black light assessment with fluorescein (Custom Action) - Available at Eye Clinics

History and physical examination

Basic laboratory tests

Direct ophthalmoscopy

COMMUNITY HEALTH

HEALTH POST

PRIMARY HEALTHCARE CLINIC

FIELD HOSPITAL (CAMP LEVEL)

Continuation from the page above

Management of eye infectons

Oral antimicrobials
Topical antimicrobials

Intravenous antimicrobials

COMMUNITY HEALTH

HEALTH POST

PRIMARY HEALTHCARE CLINIC

FIELD HOSPITAL (CAMP LEVEL)

Continuation from the page above

Screening and diagnosis of skin and soft tissue infections

History and physical examination

Basic laboratory tests
Ultrasound

Management of skin and soft tissue infections

Oral analgesics
Oral antimicrobials for skin and soft tissue infections
Topical antimicrobials for skin and soft tissue infections
Topical antimicrobials for skin infestation (scabies and lice) (Custom Action)

Incision and drainage
Intravenous antimicrobials

Chapter 4: Minimum Staffing

Minimum Staff Required

63-64

Primary Healthcare

Field Hospitals

Staffing Norms | Primary Health Care

[Return to H3 package overview](#) ←

Staffing Category	Health Post (HP)	Primary Healthcare Clinic (PHC)	Comment
PHC Manager		1	
Medical Doctor	1	5	A medical Doctor should be present whenever the facility is open for service
Sub-assistant Community Medical Officer (SACMO)/Medical Assistant	2	4	
Family Planning Focal Person	0	1	A focal person in HP should be available for the family planning
Nurse	1	5	A Nurse should be present whenever the facility is open for service
Midwife (ANC, Delivery, PNC)	1	6	A Midwife should be present whenever the facility is open for service
Pharmacist	0	1	
Dispenser	1	2	
Laboratory Technician	0	1	In Health Post for only RTD test
Laboratory Assistant	0	1	
Focal Person for Reporting and Data Management	1	1	For the registry as well
Community Health Worker Supervisor	As required	As required	
Community Health/Psychological Worker	As required	As required	
Ambulance Driver		2	
Vaccinator (for the fixed vaccination sites)	2	2	
Psychologist		1	
Other Support Staff and Security	0	As required	

Staffing Norms | Field Hospitals

[Return to H3 package overview](#) ←

Category	Number of Minimum Staff	Comments
Facility Manager/ Hospital Lead	1	
Residential Medical Officer	1	One Minimum, organization can increase as per their HR policies
Consultant/ Specialist		
Medicine	1	Doctors with Post-Graduate Degrees/ training equivalent 8 based on the available services (H3P)
Surgery	1	
Gyne and Obs	1	
Anesthesiologist and Pain Medicine	1	
Pediatrics	1	
Cardiology and C.C.U	1	
Orthopedics and Traumatology	1	
Radiology and Imaging	1	
Assistant Surgeon/ Medical Officer (Doctors)		
Medicine	2	
Surgery	2	
Gyne and Obs	2	
Anesthesiologist and Pain Medicine	2	
Pediatrics	2	
Cardiology and C.C.U	2	
Orthopedics and Traumatology	1	
Radiology and Imaging	1	
Dental Surgeon	1	Optional (if the services is available)

Note: Organizations may hire the required administrative staff as per their policy.

Category	Number of Minimum Staff	Comments
Emergency Medical Officer	4	
Nursing Supervisor	1	
Senior Staff Nurse	Based on the number of inpatient beds and OPD clinics	1 per 5 beds per shift, e.g., 3 per 5 beds considering 3 shifts per day + 1 for OPD
Midwife	Based on the number of beds	1 midwife per 6 beds per shift
Statistician	1	
Medical Technologist (EPI)	1	
Medical Technologist (Lab)	4	
Medical Technologist (Radiography)	2	
Medical Technologist (Dental)	1	Optional (if the services is available)
Medical Technologist (phsiotherapy)	1	
Medical Technologist (S.I.T)	1	Optional
Medical Technologist (Blood Bank)	1	
Pharmacist	1	1 with 3 drug dispensers
Storekeeper	2	
Assitant Sataatistician/ Data Entry Operator	1	
Ticket Clerk/ Traige	2	
Drug Dispenser	3	
WASH & IPC focal	Need to institutionalized	
mhGAP trained doctors	1	
Ambulance Drivers	Based on the number of ambulances	

