

3 October 2024

## KEY MESSAGES:

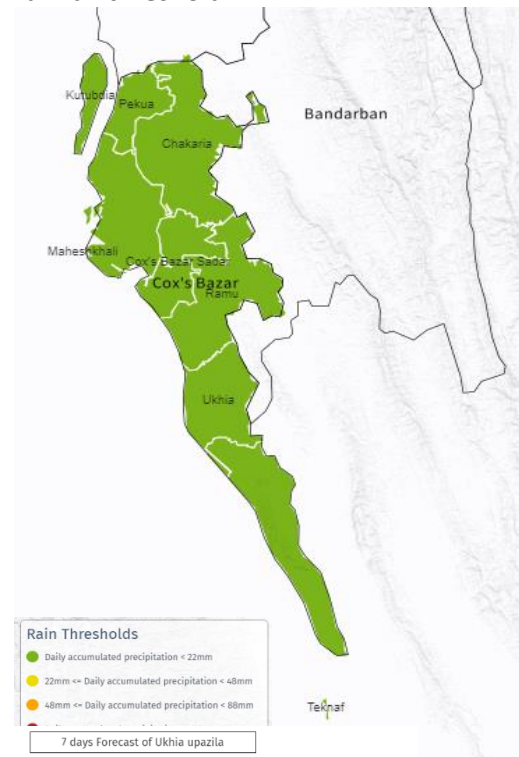
- **Light to moderate showers are forecasted** across Cox’s Bazar district despite the likelihood of a low-pressure area forming over Bangladesh and the North Bay of Bengal during the next 24 hours.
- Daily accumulated precipitation will be below the 22 mm minimum average, with estimated maximum showers of 41 mm in Teknaf within the next 24 hours.
- The projected accumulated rainfall for the forthcoming five days will be around 130 mm.

Another week of favorable weather is forecasted across Cox’s Bazar district, with light to moderate rain showers below 22mm/day from 3 to 9 October, as indicated in the [Bangladesh Meteorological Department's](#) weather forecast<sup>1</sup>. However, a low-pressure area is expected to form around 4 October over the North Bay of Bengal and surrounding areas. As a result, scattered low to moderate downpours are

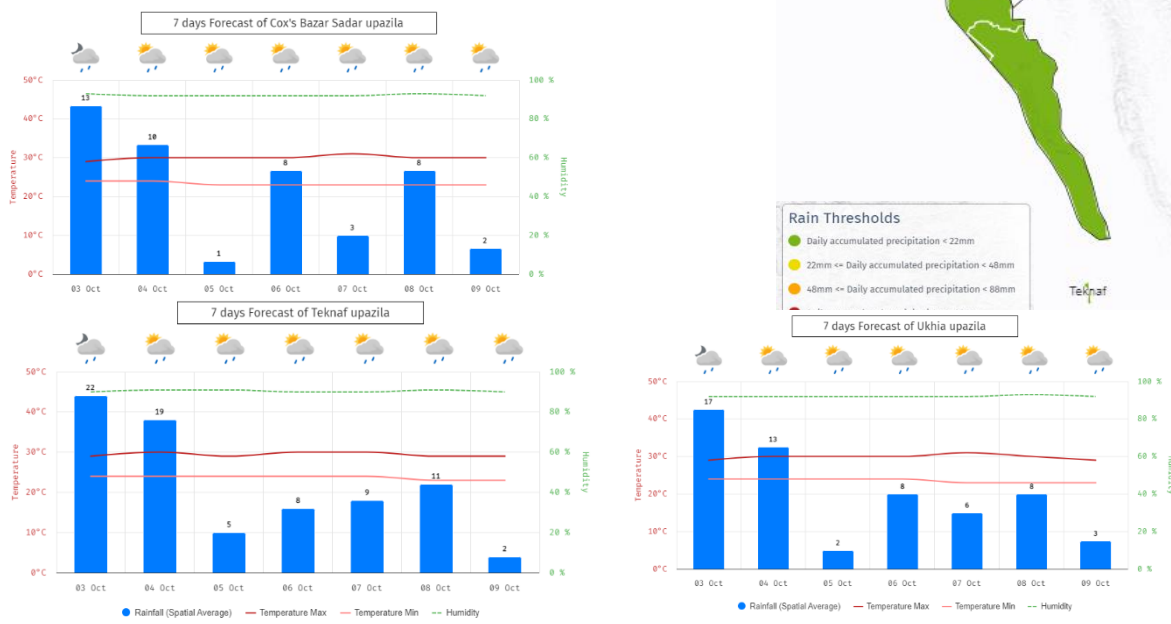
forecasted in Teknaf and Ukhiya. With continuous favorable weather, the accumulated five-day rainfall threshold is expected to be around 130 mm.

Consequently, daily accumulated rainfall is estimated at below the minimum threshold of 22 mm across Cox’s Bazar district (*Figure 1*). While in Teknaf, the maximum total rain is estimated to be above 40 mm due to the influence of the low-pressure area laying over the southwest of the Bay of Bengal and the Arakan (Rakhine) coast (*Figure 2*). Similarly, gusty wind is forecasted to be below 40 kilometers per hour.

**Figure 1: Forecasted 7 days accumulated rainfall threshold.**



**Figure 2: Seven days daily average rainfall forecast.**



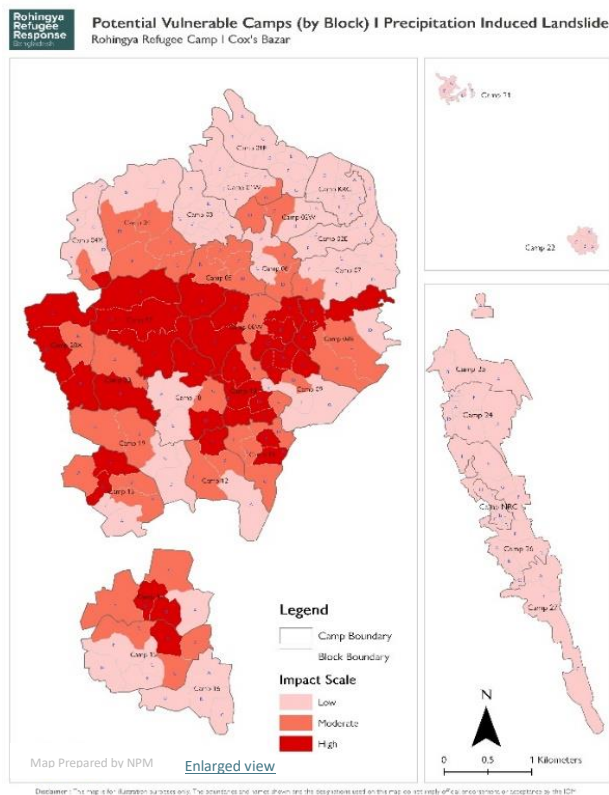
<sup>1</sup> [BMD Weather Forecast](#)

Considering the vulnerability of the Rohingya camps, the ISCG advises that Sectors, EPR WG members, and relevant agencies **carry out emergency preparedness actions**, including **timely dissemination of early warning messages, alerts, and advisories**, especially **during the onset of heavy downpours**. Importantly, the **most vulnerable should be relocated to safe places** to reduce the potential for negative consequences, significant damage, and loss of life. Actions shall be carried out closely with Sector Lead agencies and camp DMCs.

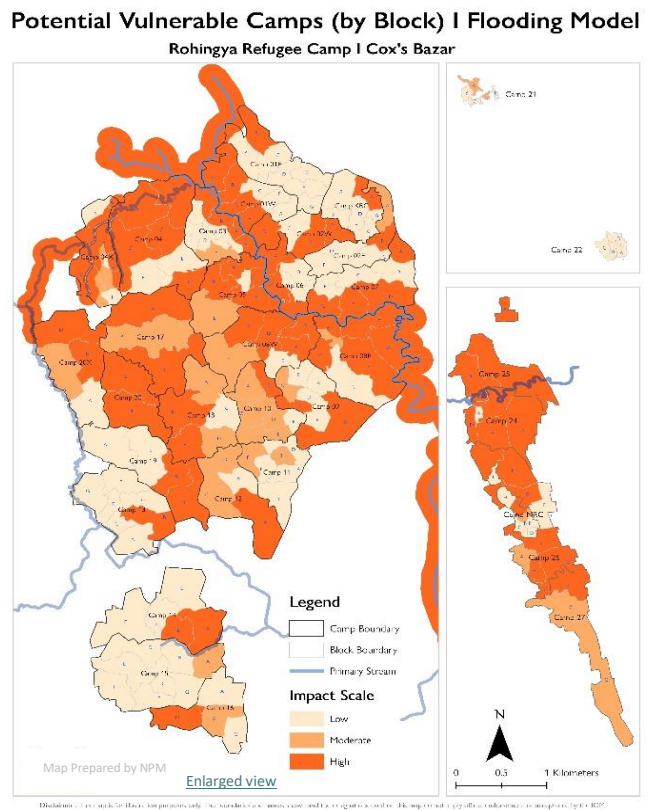
As previously advised by the ISCG, the high-risk and highly susceptible landslide locations in the Rohingya refugee camps should be prioritized for readiness and preparedness actions. In addition to preparedness in moderately susceptible locations, areas frequently affected by slope failure incidents since the monsoon period should be prioritized, such as **Camps 3, 7, 8W, 9, 10, 11, 12, 13, 16, 18, 19, 20, 20 Ext**. Other areas that need attention with slope failure incidents reported are **Camps 1W, 1E, 9, 2E, 26 and KRC** (Figure 3).

On the other hand, the low-lying areas that have been frequently flooded should also be prioritized for flood preparedness actions, such as **Camps 1W, 3, 20 and 20 Ext**. Additional areas that have experienced flooding include **Camps 4, 8W, 18, 19, 22, 26 and 27** (Figure 4).

**Figure 3: Landslide Risk Map at camps**



**Figure 4: Flood high-risk areas**



For harmonized preparedness messages, the ISCG advises consistently using the [Guidebook for Multi-Hazard Risk Communication and Community Engagement in Camp Settlement](#) approved by the RRRC. This guidebook is being widely disseminated as a reference for EPR messages in the Rohingya refugee camps.