

# Minimum Package of Essential Health Services For Primary and Secondary Healthcare Facilities

A High Priority Health Services Package

Bangladesh Rohingya Response at  
Cox's Bazar



2024

Contact: [coord\\_cxb@who.int](mailto:coord_cxb@who.int)

### Background

One of the health cluster's core coordination functions is to ensure that the affected people access quality healthcare services. Being a cluster-like approach in the Rohingya Response at Cox's Bazar, the Health Sector also aims for the same goal i.e., all the essential health services should be delivered equitably while ensuring quality and accessibility. Central to this goal is a cohesive definition of the standard of health services to be delivered at each level of the health service delivery platforms- organized into a set of/packages of services. The Minimum Package of Essential Health Services (MPEHS) is to set and demarcate minimum standards to operate in each service delivery platform and a Maximum that they can extend to ensure the rational use of resources along with the quality.

In the Cox's Bazar Rohingya Response, the first Minimum Package of Essential Health Services was developed in 2017 after the influx and revised in December 2018 and February 2020 by the WHO-led Health Sector under the Leadership of the Ministry of Health and Family Welfare (MoHFW), Bangladesh and the Office of The Refugee Relief and Repatriation Commissioner (RRRC). The packages considered SPHERE standards, UNHCR Global Strategy for Humanitarian Response, and contextualized realities and outlined a set of priority health services for primary healthcare facilities operating in the Rohingya refugee response. The package was only for primary healthcare and was officially endorsed by the government and was initially for two-year terms later extended to 2022.

The scope of the previous package was limited to general primary healthcare facilities only with the following classification of primary healthcare facilities-

- a) Health Post: Comparable to the MoHFW Community Clinic (CC) but adapted to the unique context with the criteria that 1 health post for 10,000 population and within 20 minutes walking distance from patients' homes delivering simple curative, maternal / child health and immunization services with referral to the Primary Health Centre (PHC) facilities and Operational during daytime only (6 days in a week and 6-8 hours per day)
- b) Primary Health Centre: comparable to the MoHFW Union Health and Family Welfare Center (UHFWC) but adapted to the unique context with the criteria that 1 Primary Health Centre (PHC) for 25,000-30,000 population and within 30 minutes walking distance from patients' homes and remain operational 24 hours in a day and 7 days a week delivering the essential PHC services.

The packages provided minimum service catalogue and Staffing Norms for these two variations of primary health care: Health Post (HP) and Primary Health Centre (PHC). However, Health services provided at the community level (by the Community Health Workers) and Secondary Health Care Facilities at the camp level i.e., the Field Hospital remained unstandardized by the previous package.

## Chapter 1: Introduction

Since the package was developed and revised based on the almost five years old scenario and context of the response, and the context has evolved and the health system and needs changed a lot over time, there has been an axiomatic need to revise the MPEHS to meet global standards, respond to the current morbidity burden, and organize care to respond to the evolving current context and its challenges as well as ensure quality with the limited resources. Beyond revising and updating the existing package of services for primary healthcare, it is required to set a standard for community-level healthcare and secondary healthcare services (Field Hospitals). To address these needs, the newer version of the package aims to develop and include minimum essential service packages for Community-level Healthcare and secondary healthcare services along with a revision of the existing package of services for primary healthcare.

This version of the package will address the below Classification of Health Care:

- a) Community Level Health Care: Primary care services delivered by community health workers (CHWs) following the CHW Package i.e., Primary prevention: RCCE, Mobilization, Screening/Referral, NO CURATIVE SERVICES. CHWs are categorized as skilled volunteers (trained at least 2-6 months). They have long experience working in camps and also supervised by the CHW supervisors.
- b) Health Post: Comparable to the MoHFW Community Clinic (CC) but adapted to the unique context with the criteria that 1 health post for 10,000 population and within 20 minutes walking distance from patients' homes delivering simple curative, maternal / child health and immunization services with referral to the Primary Health Centre (PHC) facilities and Operational during daytime only (6 days in a week and 6-8 hours per day)
- c) Primary Health Centre: Comparable to the MoHFW Union Health and Family Welfare Center (UHFWC) but adapted to the unique context with the criteria that 1 Primary Health Centre (PHC) for 25,000-30,000 population and within 30 minutes walking distance from patients' homes and remain operational 24 hours in a day and 7 days a week delivering the essential PHC services.
- d) Field Hospital: Comparable to the MoHFW Upazila Health Complex (UHC) as the first-level referral facility. It is characterized by the availability of physicians (occasionally specialists), diagnostic tools (basic lab and simple radiology), inpatient care, and emergency surgery & operative care, including obstetric interventions (CEmONC), emergency care, advanced lab diagnostics, etc. Adopted the 50-bed structure of the Upazila Health Complex (UHC).

### Adapting the WHO High Priority Health Services for Humanitarian Setting (H3 Package) for MPEHS

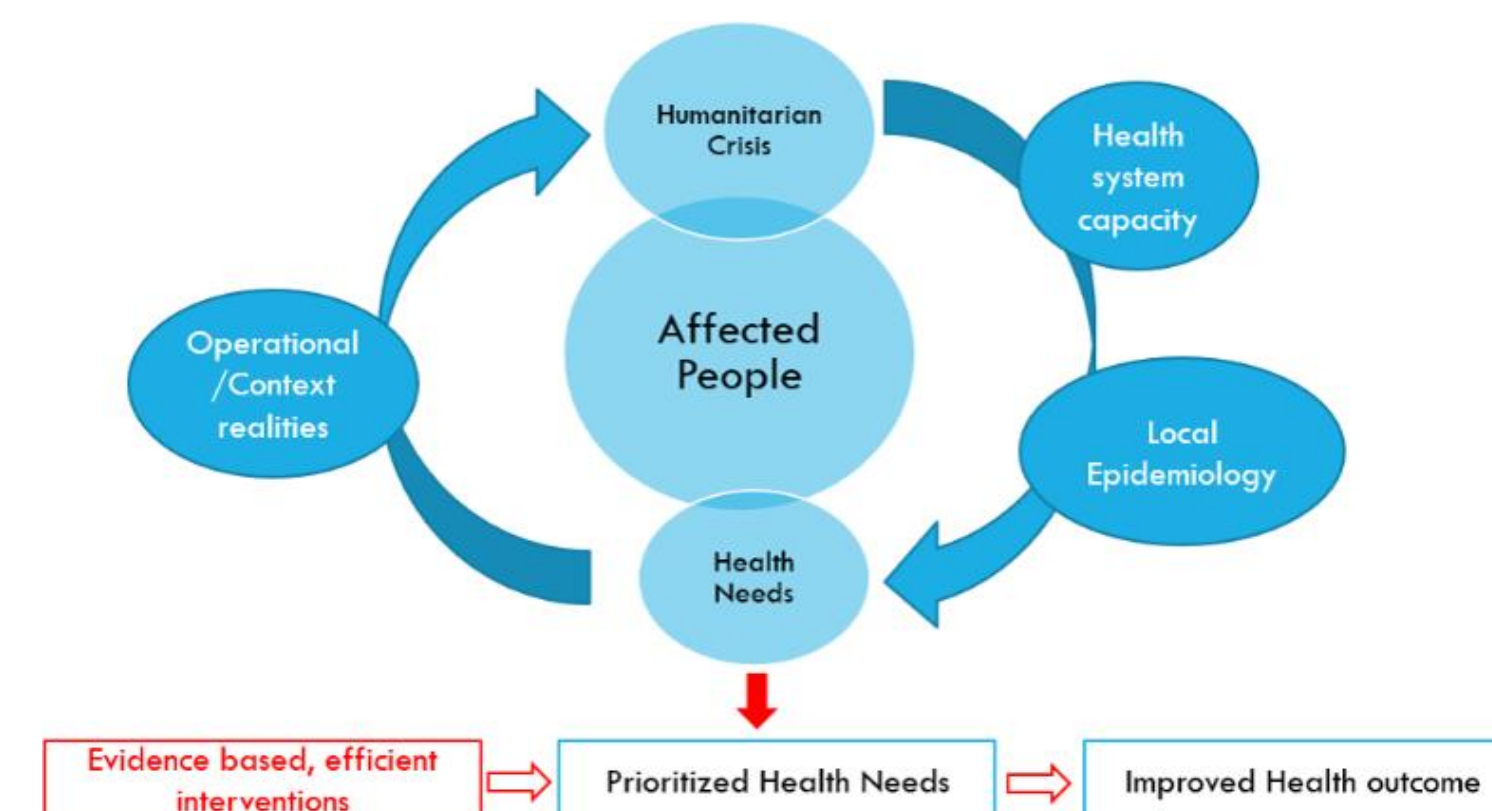
For this new version of MPEHS, the WHO High Priority Health Services for Humanitarian Setting (H3 Package) was used as a global reference package aligned with the SDG 3.8: Principles of UHC and the WHO SPDI tool has been used to contextualize the package with the existing scenario.

In March 2023, WHO released the High Priority Health Services for Humanitarian Settings (H3P), a set of guidelines for essential health services in humanitarian settings. This 'redline' guidance aims to elevate the standard of care provided by humanitarian partners. To customize this for Cox's Bazar, a diverse group of experts, healthcare professionals, and policymakers convened for a two-day workshop. They crafted a draft of Cox's Bazar-specific Essential Health Services Package, considering local standards, resources, and needs. This draft underwent scrutiny by the Strategic Advisory Group (SAG) and technical staff, who also addressed staffing norms absent in the original H3 Package. Following their review and government endorsement, the Health Sector team collaborated with the Global Health Cluster and H3 team to integrate feedback and develop a distributable booklet of the updated Essential Health Service Packages.

The rationale for designing the MPEHS based on H3P

In a fragile and protracted setting, a standard common service package serves several functions.

- i. Provide a policy statement by the Ministry of Health for the health strategy the response.
- ii. Define a set of services to be delivered, as standard, by facility level, which is intended to be used for planning, approvals, etc.,
- iii. on an operational level, used as a guide to healthcare facility managers on the role, responsibilities, and standards of their institutions,
- iv. To serve as a basis for resource allocation and for reducing fragmentation, gaps, and inequities in access to healthcare



The Essential Health Service Package (H3P) is a critical initiative aimed at enhancing the quality and accessibility of healthcare services in humanitarian settings. Designed to serve as a foundational guide for humanitarian implementers and donors, H3P promotes accountability and facilitates the integration of essential health services into national Universal Health Coverage (UHC) packages. This initiative acts as an operational entry point for the Humanitarian-Development Nexus, ensuring that services are aligned with both immediate humanitarian needs and long-term development goals.

### Purpose of H3P

The primary purpose of H3P is multifaceted, focusing on the following key objectives:

- **Accountability:** H3P promotes the accountability of humanitarian implementers and donors by setting clear standards and expectations.
- **Service Mapping:** It aids in mapping essential health services to national UHC packages, ensuring coherence and alignment with broader health system goals.
- **Operational Reference:** Serving as a reference for operational planning, implementation, and monitoring, H3P helps increase access and coverage of health services.
- **Standard Setting and Quality Improvement:** By defining a minimum set of services to be delivered to affected populations, H3P ensures standard setting and supports quality improvement processes.
- **Support for IASC AAP:** The package supports the Inter-Agency Standing Committee's Accountability to Affected Populations (IASC AAP) framework.
- **Costing and Planning:** H3P provides a reference for costing, feasibility analyses, planning, budgeting, implementation, and monitoring within Joint Response Plans (JRPs).
- **Humanitarian-Development Nexus:** It provides an entry point for operationalizing the Humanitarian-Development Nexus, bridging short-term humanitarian efforts with long-term development strategies.

### Scope of H3P

H3P is designed to operate in humanitarian and low-resource settings, addressing both immediate and protracted crises. The scope encompasses a variety of service delivery platforms and networks, all aligned with a primary healthcare approach:

- **Contextual Adaptation:** Humanitarian, Low resource setting, Consideration of local Burden of Diseases (BoD), Health System Capacity
- **Aligned to Primary Healthcare approach:** Community and outpatient services through health posts (HP) and primary healthcare centers (PHCs). Dedicated or integrated primary healthcare.
- **Secondary Care:** Services provided by field hospitals and comprehensive healthcare centers.
- **Staffing and Capacity:** Defined staffing capacities for each delivery platform to ensure efficient and effective service provision.
- **Reproductive Health:** Specific facilities for pregnancy and birthing to deliver Basic Emergency Obstetric and Newborn Care (BEmONC).
- **Healthcare Integration:** Dedicated or integrated primary healthcare services, with core and extended service options.
  - ✓ **Core Services:** Essential services that must be available at all times.
  - ✓ **Extended Services:** Services that may require additional investments in resources, infrastructure, or workforce training before they can be delivered.
- **Standard service definitions:** WHO UHC Compendium, SRH MISP, etc.

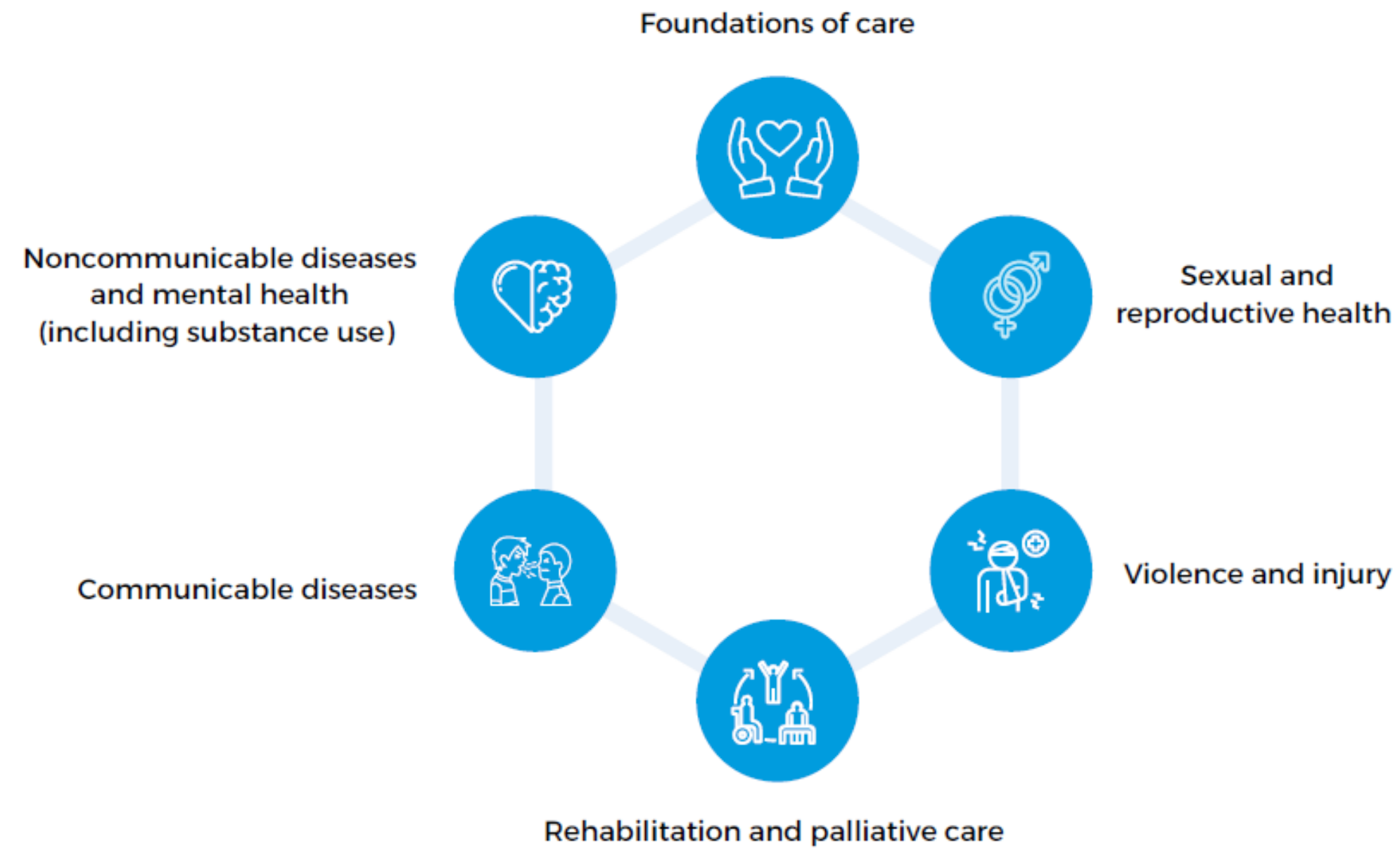


Figure: Components of H3P

### Operational Context and Assumptions

H3P is designed with the following assumptions about the operational context:

- Protracted Crises: The package is tailored for settings experiencing prolonged crises with limited national health system capacity.
- Capacity Needs: Humanitarian assistance is essential to meet capacity needs, particularly in human resources and commodities.
- Donor Support: Sustained donor support is critical for the successful implementation and scaling of H3P services.

By addressing these key areas, the Essential Health Service Package (H3P) aims to ensure that affected populations receive timely, effective, and quality healthcare, bridging the gap between humanitarian assistance and sustainable development.

# Chapter 2: Service Catalogue in Different Health Service Delivery Platforms: Overview

## FOUNDATIONS OF CARE

11-15

### First access, continuity and coordination

Longitudinal care planning  
Referral planning  
Early recognition and system activation for time sensitive conditions  
Promotion of self-care

### Approach to emergency syndromes

General approach to emergency syndromes  
Initial management of difficulty in breathing  
Initial management of acute altered mental status  
Initial management of shock  
Initial management of serious injury  
Initial management of sepsis

### Approach to common signs and symptoms

General approach to all common signs and symptoms

## REPRODUCTIVE AND SEXUAL HEALTH

16-24

### Antenatal care

Routine care during pregnancy

### Labour and childbirth care

Routine care during first stage of labour  
Routine care during second stage of labour  
Routine care during third stage of labour  
Immediate care for newborn  
Management of complications during labour and childbirth

### Postnatal care

Routine care for postpartum women  
Routine care for newborn  
Care for neonatal complications

### Abortion

Abortion related care  
Care for complications of abortion

### Ectopic pregnancy

Diagnosis of ectopic pregnancy  
Management of ectopic pregnancy

### Menstrual health

Promotion of menstrual health

### Contraception and family planning

Screening, testing and counselling for family planning and contraception  
Family planning and contraception

### Intimate partner and sexual violence (see also Violence section)

Prevention of intimate partner and sexual violence, including rape  
Care and support for survivors of intimate partner and sexual violence, including rape  
Care and support for survivors of intimate partner and sexual violence, including rape

## GROWTH DEVELOPMENT AND AGEING

25-27

### Healthy nutrition

Support for healthy nutrition

### Undernutrition

Assessment of nutritional status  
Management of undernutrition

### Healthy growth and development in childhood and adolescence

Longitudinal assessment of growth and development

### Palliative care

Holistic palliative care assessment, planning and referrals  
Palliative care for physical symptoms and needs

# Chapter 2: Service Catalogue in Different Health Service Delivery Platforms: Overview

## NONCOMMUNICABLE DISEASES & MENTAL HEALTH 28-44

### Cervical cancer

Screening and early detection of pre-invasive cervical cancer

### Cardiovascular risks

Assessment of cardiovascular risks

### Hypertension

Prevention of hypertension  
Longitudinal management of hypertension  
Screening and diagnosis of hypertension  
Management of hypertensive urgencies and emergencies

### Ischaemic heart disease

Prevention of ischaemic heart disease  
Screening and diagnosis of ischaemic heart disease  
Longitudinal management of ischaemic heart disease  
Management of acute ischaemic heart disease  
Rehabilitation for ischaemic heart disease

### Cerebrovascular disease

Prevention of stroke  
Early identification and diagnosis of stroke  
Longitudinal management of stroke  
Management of acute stroke

### Chronic obstructive pulmonary disease

Screening and diagnosis of COPD  
Management of acute exacerbation of COPD

### Asthma

Prevention of asthma  
Screening and diagnosis of asthma  
Management of acute exacerbation of asthma  
Longitudinal management of asthma

### Oral diseases and conditions

Prevention of oral diseases  
Screening and diagnosis of oral diseases  
Longitudinal management of oral diseases  
Management of acute exacerbations of oral diseases

### Diseases of the oesophagus, stomach, liver, gallbladder, pancreas and intestines

Prevention of gastrointestinal diseases  
Screening and diagnosis of gastrointestinal diseases  
Management of gastroesophageal reflux disease  
Management of gastritis, peptic ulcer disease and duodenitis  
Management of ileus and intestinal obstruction  
Management of appendicitis  
Management of hernias (inguinal, femoral, abdominal)  
Management of gallbladder and biliary diseases  
Management of pancreatitis  
Management of gastrointestinal bleeding  
Management of ascites and acute complications

### Diabetes mellitus

Prevention of diabetes mellitus  
Screening and diagnosis of diabetes mellitus  
Management of hyperglycaemic and hypoglycaemic emergencies  
Longitudinal management of diabetes

### Thyroid disorders

Screening and diagnosis of thyroid disorders  
Management of thyroid disorders

### Noninfectious disorders of female genital tract

Management of pelvic organ prolapse

### Depression

Assessment of depression  
Management of depression



# Chapter 2: Service Catalogue in Different Health Service Delivery Platforms: Overview

## Anxiety disorders (including PTSD)

Assessment of anxiety disorders  
Management of anxiety disorders

## Psychotic disorders

Assessment of psychotic disorders  
Management of psychotic disorders

## Bipolar disorders

Assessment of bipolar disorder  
Management of bipolar disorders

## Mental disorders |Self-harm

Assessment of self-harm/suicide risk  
Management of self-harm / suicide risk

## Promotive and preventive mental health services for adolescents

Promotive and preventive mental health services for adolescents  
Management of emotional problems and disorders in children and adolescents

## Substance use disorders

Screening and diagnosis of alcohol use disorders  
Screening and diagnosis of drug use disorders

Screening and diagnosis of epilepsy

Management of epilepsy and seizures

Screening and diagnosis of eye diseases and vision impairment

Management of refractive error, amblyopia and strabismus

Screening and diagnosis of inflammatory skin disorders

Management of dermatitis (atopic, contact, seborrheic)

## VIOLENCE AND INJURY.

45-52

### Interpersonal violence

Prevention and early recognition of violence  
Safe and confidential access to health services for conditions related to violence  
Identification of child maltreatment and youth violence  
Management of child maltreatment and youth violence

### Violence against older people

Identification of violence against older people  
Management of violence against older people

### Mechanical injury

Counselling for injury prevention  
General approach to serious injury  
Management of head and face injury (including ocular injury)  
Management of spinal injury (including neck injury)  
Management of thoracoabdominal injury  
Management of pelvic injury (including urogenital)  
Management of extremity injury  
Management of wounds (excluding burns)

### Thermal and chemical injuries (burns)

Counselling for prevention of burns  
Management of burns

### Envenomation injuries

Counselling for prevention of bite and envenoming injuries  
Management of bites and envenoming injuries

### Environmental exposures (including drowning)

Prevention of environmental exposures (including drowning)  
Management of environmental exposures (including drowning)

# Chapter 2: Service Catalogue in Different Health Service Delivery Platforms: Overview

## Poisoning and toxic exposures

Prevention of poisoning and toxic exposures  
Diagnosis of poisoning and toxic exposures  
Management of poisoning and toxic exposures

## COMMUNICABLE DISEASES

53-62

### HIV

Prevention of HIV  
Screening and diagnosis of HIV  
Management of HIV

### Tuberculosis

Prevention of tuberculosis  
Case detection of tuberculosis  
Diagnosis of tuberculosis

### Malaria

Screening and diagnosis malaria  
Management of malaria

### Lower respiratory infections (excluding TB)

Prevention of lower respiratory infections  
Screening and diagnosis of lower respiratory infections  
Management of acute lower respiratory infections

### Enteric infections

Prevention of enteric infections  
Screening and diagnosis of enteric infections  
Management of enteric infections  
Prevention of cholera  
Screening and diagnosis of cholera  
Management of cholera

### Sexually transmitted and reproductive tract infections

Prevention of STIs and reproductive tract infections  
Screening and diagnosis of STIs and reproductive tract infections  
Management of STIs and reproductive tract infections

## Urinary tract infections

Screening and diagnosis of urinary tract infections  
Management of urinary tract infections

## Central nervous system (CNS) infections

Management of brain abscess and encephalitis  
Screening and diagnosis of meningitis  
Management of meningitis

## Ear, nose, and throat (ENT) infections

Screening and diagnosis of ENT infections  
Management of ENT infections  
Management of ear infections and complications

## Eye infections

Prevention of eye infections  
Screening and diagnosis of eye infections  
Management of eye infections

## Skin and soft tissue infections

Screening and diagnosis of skin and soft tissue infections  
Management of skin and soft tissue infections

**Chapter 3:**  
**Detailed activity**  
**descriptions to**  
**support planning and**  
**implementation**



## **Foundations of care**

---

## COMMUNITY HEALTH

## HEALTH POST

## PRIMARY HEALTHCARE CLINIC

## FIELD HOSPITAL (CAMP LEVEL)

### Longitudinal care planning

Medical record review (Review and documentation of history and physical including interim events)

Medication review for necessary dose adjustment, cessation, and/or modification (Medication review of chronic therapeutic regimens for complications and adherence)

### Referral planning

Coordination of referrals

Discharge planning for inpatient admissions  
Counter-referrals

### Early recognition and system activation for time sensitive conditions

Coordination of referrals including with receiving facility (Coordination of transfer including with receiving facility)

Protocol for acuity-based triage with validated tool (Protocol for acuity-based triage in emergency units)

Clinical assessment for danger signs and early referral (Protocol for recognition of danger signs in outpatient care)

Protocol to access staffed emergency unit 24 hours per day (Designation of process for access to 24-hour emergency unit)

### Promotion of self-care

Environmental modification  
Education and advice on self care (Self-care plans)  
Caregiver support (Custom Action)

Behavioural modification plans

# Foundations of care | Integrated approach to common presentations | Approach to emergency syndromes

[Return to H3 package overview](#) ←

## COMMUNITY HEALTH

## HEALTH POST

## PRIMARY HEALTHCARE CLINIC

## FIELD HOSPITAL (CAMP LEVEL)

### General approach to emergency syndromes

Clinical assessment for early recognition of the need for referral

Clinical assessment for danger signs and early referral (Clinical assessment for early recognition of the need for referral)

Oral volume resuscitation

History and physical examination  
Point of care testing  
Basic laboratory tests

Manual airway repositioning (Basic airway management)  
Basic airway management  
Supplemental oxygen  
Oral analgesics  
Oral antimicrobials  
Oral antipyretics  
Oral antiplatelets

Advanced laboratory tests  
**Point of care ultrasound**  
**Electrocardiogram (ECG)**  
**Continuous vital sign monitoring**  
Transurethral catheter placement

Oral benzodiazepines  
Intramuscular benzodiazepines  
Intravenous analgesics  
Intravenous antimicrobials

X-ray

Non-invasive mechanical ventilation  
Endotracheal intubation  
Invasive mechanical ventilation  
**Intravenous thrombolytics**  
Intravenous benzodiazepines

### Initial management of difficulty in breathing

Intramuscular adrenaline  
Multidose inhaler with antimuscarinics  
Multidose inhaler with beta agonists  
Nebulized antimuscarinics  
Nebulized beta agonists  
Oral antihistamines  
Oral corticosteroids  
Oral diuretics

Needle decompression  
**Intravenous adrenaline**  
**Intravenous antihistamines**  
Intravenous corticosteroids  
Intravenous diuretics

**Subcutaneous anticoagulants**

### Initial management of acute altered mental status

**Oral antiepileptics**  
Oral glucose  
Intravenous fluids

Rectal anticonvulsants  
**Intravenous thiamine**

Lumbar puncture  
**Intravenous antiepileptics**

### Initial management of shock

Cardiopulmonary resuscitation

Intravenous fluids

**Defibrillation**

Intramuscular adrenaline for shock  
Intravenous adrenaline  
Intravenous antihistamines  
Intravenous corticosteroids  
Intravenous tranexamic acid (TXA)  
**Intravenous vasopressors for shock**

Pericardiocentesis  
Blood and blood product transfusion  
**Therapeutic thoracentesis**  
**Intravenous anticoagulants**

# Foundations of care | Integrated approach to common presentations | Approach to emergency syndromes

[Return to H3 package overview](#) ←

## COMMUNITY HEALTH

## HEALTH POST

## PRIMARY HEALTHCARE CLINIC

## FIELD HOSPITAL (CAMP LEVEL)

### Initial management of serious injury

Continuation from the page above

Pelvic binding  
Spine immobilization  
Wound care  
Splinting

Intravenous analgesics

Nonoperative reduction and immobilization  
Needle thoracostomy for decompression

Diagnostic peritoneal lavage  
Blood and blood product transfusion  
Pericardiocentesis  
Three-sided chest dressing for sucking chest wound  
Tube thoracostomy  
Intravenous anticoagulants  
Intravenous anxiolytics  
Intravenous tranexamic acid (TXA)

### Initial management of sepsis

Diagnostic paracentesis  
Lumbar puncture  
Joint aspiration  
Intravenous antimicrobials  
Intravenous antipyretics  
Intravenous vasopressors

# Foundations of care | Integrated approach to common presentations | Approach to common signs and symptoms

### General approach to all common signs and symptoms

Counselling on warning signs and when to seek additional treatment  
Counselling on nutrition, food safety, and healthy diet  
Condition-specific nutrition assessment and counselling (Counselling on nutrition, food safety, and healthy diet)  
Clinical assessment for danger signs and early referral (Clinical assessment for early recognition of the need for referral)

Counselling on behavioural/environmental modifications to address symptoms

History and physical examination  
Rapid evaluation for conditions requiring urgent interventions  
Expanded vital signs, including pulse oximetry (Pulse oximetry)  
Pulse oximetry  
Otoscopy

# Foundations of care | Integrated approach to common presentations | Approach to common signs and symptoms

[Return to H3 package overview](#) ←

COMMUNITY HEALTH

HEALTH POST

PRIMARY HEALTHCARE CLINIC

FIELD HOSPITAL (CAMP LEVEL)

## General approach to all common signs and symptoms

Oral rehydration solution

Peak flow measurement

Speculum examination

Transurethral catheter placement

Nasogastric suction

Supplemental oxygen

Multidose inhaler with beta agonists

(Inhaled bronchodilators for cough and dyspnoea)

Topical antimicrobials

Topical analgesics

Topical antihistamines

Topical corticosteroids

Intramuscular antimicrobials

Intramuscular analgesics

Oral analgesics

Oral and rectal antipyretics (Oral antipyretics)

Oral antimicrobials

Oral antiemetics

Oral antihistamines

Oral corticosteroids

Oral antiplatelets

Oral diuretics

Oral contraceptives

Oral zinc (Custom Action)

Oral H2 receptor antagonist (Custom Action)

Oral proton pump inhibitor (Custom Action)

Intravenous fluids

Intravenous analgesics

Intravenous antimicrobials

Intravenous antiemetics

Electrocardiogram (ECG)

Ultrasound

X-ray

Lumbar puncture





## **Sexual and reproductive health**

# Reproductive and sexual health | Pregnancy and birth | Antenatal care

[Return to H3 package overview](#) ←

COMMUNITY HEALTH

HEALTH POST

PRIMARY HEALTHCARE CLINIC

FIELD HOSPITAL (CAMP LEVEL)

## Routine care during pregnancy

<p>Referral of pregnant women to ANC (Custom Action)</p>	<p>Oral energy and protein dietary supplementation among undernourished populations            Vaccination: Tetanus toxoid containing vaccine (TTCV)            Oral antihelminthics in endemic areas            History and physical examination            Dating of pregnancy by history (including last menstrual period) and physical examination (Custom Action)            Symphysis-fundal height measurement (Custom Action)            Blood pressure measurement and assessment (Custom Action)            Screening for gestational diabetes (Custom Action)            Routine screening for STIs, including HIV (Custom Action)            Screening for hepatitis B (Custom Action)            Assess fetal presentation (Custom Action)            Basic laboratory tests</p> <p>Monitor fetal heart rate            Oral iron and folic acid supplementation            Oral preventive calcium supplementation among populations with low dietary calcium intake            Oral antacids            Oral antimalarials in endemic areas</p>	<p>Fetal biophysical profile (Custom Action)            Fetal nonstress test (Custom Action)            Advanced laboratory tests            Ultrasound</p>	
--	--	---	--

# Reproductive and sexual health | Pregnancy and birth | Labour and childbirth care

COMMUNITY HEALTH

HEALTH POST

PRIMARY HEALTHCARE CLINIC

FIELD HOSPITAL (CAMP LEVEL)

## Routine care during first stage of labour

	<p>Digital vaginal examination            Clinical assessment of uterine activity</p>	<p>Intermittent auscultation of the fetal heart rate            Fetal auscultation using a doppler ultrasound            Relaxation techniques for pain management            Monitoring of labour with partograph/labour care guide (Custom Action)</p>	<p>Epidural anaesthesia for pain</p>
--	---	--	--------------------------------------

Actions/services in black fonts are mapped at lowest service delivery platforms  
 Actions/services in orange fonts are additional/extended services

COMMUNITY HEALTH

HEALTH POST

PRIMARY HEALTHCARE CLINIC

FIELD HOSPITAL (CAMP LEVEL)

Continuation from the page above

**Routine care during second stage of labour**

Clinical assessment of second stage of labour  
 Clinical assessment of uterine contraction  
 Vaginal delivery

**Routine care during third stage of labour**

Monitoring of vaginal bleeding  
 Monitoring of maternal vital signs  
 Delayed cord clamping and hygienic cord care (Umbilical cord clamping)  
 Oral uterotonics for prevention of postpartum haemorrhage  
 Intramuscular uterotonics to prevent postpartum haemorrhage  
 Anti-D immunoglobulin (Custom Action)  
 Intravenous uterotonics to prevent postpartum haemorrhage

**Immediate care for newborn**

Protecting, promoting and supporting breastfeeding, including: Early initiation of breastfeeding, establishment and maintenance of breastfeeding, immediate skin to skin contact, breastfeeding counselling, and skilled support for re-lactation, wet nursing, use of donor human milk

Counselling on skin-to-skin contact  
 Counselling on personal hygiene and handwashing with soap  
 Counselling and support for newborn care, including responsive caregiving and stimulation, recognition of danger signs and follow-up

Hygienic cord care

Basic neonatal resuscitation

Topical antimicrobials to prevent ophthalmia neonatorum

Weighing and initial clinical examination (History and physical examination for newborn)

Needle decompression

Surgical airway  
 Diagnostic thoracentesis  
 Therapeutic thoracentesis

COMMUNITY HEALTH

HEALTH POST

PRIMARY HEALTHCARE CLINIC

FIELD HOSPITAL (CAMP LEVEL)

Continuation from the page above

**Management of complications during labour and childbirth**

- Point of care testing
- Basic laboratory tests
- Blood and blood products transfusion
- Balloon tamponade for postpartum haemorrhage
- Amniotomy
- Membrane sweeping/stripping
- Repair of first and second degree perineal tear
- Repair of cervical laceration
- Oral prostaglandin analogues
- Vaginal prostaglandin analogues to induce labor
- Oral antihypertensives
- Intramuscular oxytocin
- Intramuscular antimicrobials for maternal peripartum infections
- Oral tocolytics
- Intramuscular antenatal corticosteroids
- Intravenous antihypertensives
- Intramuscular magnesium sulphate
- Intravenous magnesium sulphate
- Intravenous oxytocin
- Intravenous tranexamic acid (TXA)
- Intravenous antimicrobial prophylaxis for women with preterm rupture of membranes
- Intravenous antimicrobials for maternal peripartum infections
- Intravenous oxytocin for induction of labour
- Intravenous fluids

- Subtotal hysterectomy
- Total hysterectomy
- Caesarean section
- Forceps delivery
- Vacuum delivery

COMMUNITY HEALTH

HEALTH POST

PRIMARY HEALTHCARE CLINIC

FIELD HOSPITAL (CAMP LEVEL)

**Routine care for postpartum women**

Counselling and practical support for immediate initiation and establishment of exclusive breastfeeding  
Counselling on family planning and contraception

Recognition of danger signs and follow-up (Referral to higher levels of care)

History and physical examination  
Clinical assessment for postpartum depression and anxiety

Basic laboratory tests  
Referral to higher levels of care  
Monitor maternal vital signs  
Oral analgesics

**Routine care for newborn**

History and physical examination

**Care for neonatal complications**

Early recognition of danger signs and illness with early referral

History and physical examination  
Targeted history and physical examination of newborn for danger signs or signs of illness (Comprehensive eye examination (Custom Action))

Point of care testing  
Basic laboratory tests

Pulse oximetry  
Pre-referral stabilization and treatment of babies with danger signs or complications (Custom Action)

Phototherapy  
Neonatal resuscitation  
Nasogastric suction (Custom Action)  
Supplemental oxygen  
Oral antimicrobials  
Oral analgesics  
Oral antiseizures  
Oral benzodiazepines  
Intravenous fluids  
Intravenous surfactant  
Intravenous antimicrobials

Advanced laboratory tests

Oral and nasal airway placement (Custom Action)

Lumbar puncture  
Blood and blood product transfusion  
Intubation (Custom Action)

COMMUNITY HEALTH

HEALTH POST

PRIMARY HEALTHCARE CLINIC

FIELD HOSPITAL (CAMP LEVEL)

Continuation from the page above

**Care for neonatal complications**

- Intravenous analgesics
- Intravenous antiseizures
- Intravenous benzodiazepines
- Inhaled bronchodilators

COMMUNITY HEALTH

HEALTH POST

PRIMARY HEALTHCARE CLINIC

FIELD HOSPITAL (CAMP LEVEL)

**Abortion related care**

- History and physical examination
- Assessment of gestational age (Custom Action)
- Vaginal speculum examination (Custom Action)
- Self-management of medical abortion
- Counselling and support for abortion, miscarriage and intrauterine fetal death (Custom Action)
- Point of care testing
- Dilation and evacuation
- Manual vacuum aspiration
- Oral analgesics
- Oral antimicrobials
- Oral iron supplementation (Custom Action)
- Oral progesterone receptor antagonists
- Sublingual prostaglandins
- Intramuscular anti-D immunoglobulin
- Cervical priming with osmotic dilator
- IM/IV antimetabolite (Custom Action)
- IV iron (Custom Action)
- Post-abortion contraceptives (Custom Action)

## Reproductive and sexual health | Pregnancy and birth | Abortion

[Return to H3 package overview](#) ←

COMMUNITY HEALTH

HEALTH POST

PRIMARY HEALTHCARE CLINIC

FIELD HOSPITAL (CAMP LEVEL)

### Care for complications of abortion

Continuation from the page above

History and physical examination  
Basic laboratory tests

Ultrasound  
Blood and blood product transfusion  
Surgical repair of genital trauma after abortion  
Intravenous antimicrobials

## Reproductive and sexual health | Pregnancy and birth | Ectopic pregnancy

COMMUNITY HEALTH

HEALTH POST

PRIMARY HEALTHCARE CLINIC

FIELD HOSPITAL (CAMP LEVEL)

### Diagnosis of ectopic pregnancy

History and physical examination  
Basic laboratory tests

Ultrasound

### Management of ectopic pregnancy

Assessment of gestational age (Custom Action)

Oral iron supplementation (Custom Action)

Oral analgesics  
Intravenous fluids

Blood and blood product transfusion  
Laparotomy for ectopic pregnancy  
Intravenous anti-D immunoglobulin  
IV iron for anaemia (Custom Action)  
Intramuscular antimetabolites

## Reproductive and sexual health | Sexual health and family planning | Menstrual health

COMMUNITY HEALTH

HEALTH POST

PRIMARY HEALTHCARE CLINIC

FIELD HOSPITAL (CAMP LEVEL)

### Promotion of menstrual health

Counselling on menarche  
Counselling on menstruation  
Counselling on painful bleeding

# Reproductive and sexual health | Sexual health and family planning | Contraception and family planning

[Return to H3 package overview](#) ←

COMMUNITY HEALTH

HEALTH POST

PRIMARY HEALTHCARE CLINIC

FIELD HOSPITAL (CAMP LEVEL)

## Screening, testing and counselling for family planning and contraception

Counselling on family planning and contraceptive methods and choice  
Counselling on fertility awareness-based (FAB) method

History and physical examination  
Point of care testing

## Family planning and contraception

Male condoms

Intrauterine device (IUD)  
Removal of subdermal contraceptive implant  
Removal of intrauterine device (IUD)  
Subdermal contraceptive implant  
Oral hormonal contraceptives  
Oral emergency contraceptives

Bilateral tubal ligation

Vasectomy

# Reproductive and sexual health | Sexual health and family planning | Intimate partner and sexual violence (see also Violence section)

COMMUNITY HEALTH

HEALTH POST

PRIMARY HEALTHCARE CLINIC

FIELD HOSPITAL (CAMP LEVEL)

## Prevention of intimate partner and sexual violence, including rape

Group education to raise awareness about violence against women and promote equal gender norms and relations

## Care and support for survivors of intimate partner and sexual violence, including rape

Provide discrete materials with information about available services

Counselling and referral to address urgent safety needs, for safe abortion (Custom Action)  
Education and advice on sexual functions and intimate relationships (Custom Action)

Safe and confidential documentation of sexual violence including medico-legal evidence



COMMUNITY HEALTH

HEALTH POST

PRIMARY HEALTHCARE CLINIC

FIELD HOSPITAL (CAMP LEVEL)

Continuation from the page above

### Care and support for survivors of intimate partner and sexual violence, including rape

First-line support

Targeted history and complete physical examination, including documentation and evidence collection as appropriate for survivors of violence (History and physical examination for intimate partner violence)  
History and physical examination  
Clinical assessment for mental health disorders  
Safe and confidential documentation of intimate partner violence  
Oral antimicrobial prophylaxis  
Post-exposure prophylaxis (PEP)  
Oral emergency contraceptives  
Intramuscular antimicrobial prophylaxis

Vaccination: Hepatitis B (Custom Action)  
Vaccination: HPV (Custom Action)



## Growth, development and ageing

## Growth, development and ageing | Nutrition, physical activity and sleep | Healthy nutrition

[Return to H3 package overview](#) ←

COMMUNITY HEALTH

HEALTH POST

PRIMARY HEALTHCARE CLINIC

FIELD HOSPITAL (CAMP LEVEL)

### Support for healthy nutrition

Counselling on nutrition, food safety, and healthy diet  
Counselling on exposure to sunlight for vitamin D (Custom Action)

## Growth, development and ageing | Nutrition, physical activity and sleep | Undernutrition

COMMUNITY HEALTH

HEALTH POST

PRIMARY HEALTHCARE CLINIC

FIELD HOSPITAL (CAMP LEVEL)

### Assessment of nutritional status

History and physical examination

### Management of undernutrition

Oral iron supplementation  
Oral folic acid supplementation  
Oral vitamin A supplementation

Oral calcium supplementation

## Growth, development and ageing | Neonatal, infant, child and adolescent growth and development | Healthy growth and development in childhood and adolescence

COMMUNITY HEALTH

HEALTH POST

PRIMARY HEALTHCARE CLINIC

FIELD HOSPITAL (CAMP LEVEL)

### Longitudinal assessment of growth and development

History and physical examination for healthy growth and development in childhood and adolescence  
Anthropometric assessments  
Counselling along with practical demonstration of exclusive breastfeeding  
Counselling on continued breastfeeding and complementary feeding  
Counselling on nutrition, food safety, and healthy diet

COMMUNITY HEALTH

HEALTH POST

PRIMARY HEALTHCARE CLINIC

FIELD HOSPITAL (CAMP LEVEL)

Continuation from the page above

**Holistic palliative care assessment, planning and referrals**

Holistic assessment of physical, psychological, spiritual and social needs

**Palliative care for physical symptoms and needs**

Mouth and skin care

Provide package of supplies for management of urinary and faecal incontinence

Assessment for pain and physical suffering in individuals with life limiting illness (Custom Action)

Oral antihistamines  
Oral analgesics  
Oral laxatives  
Oral antiemetics  
Oral antimicrobials  
Oral corticosteroids  
Oral opioids

Urinary catheter placement

Intramuscular opioid antagonists

Therapeutic thoracentesis  
Therapeutic paracentesis



**Noncommunicable  
diseases  
and mental health**

---

## Noncommunicable diseases and mental health | Cancers | Cervical cancer

[Return to H3 package overview](#) ←

COMMUNITY HEALTH

HEALTH POST

PRIMARY HEALTHCARE CLINIC

FIELD HOSPITAL (CAMP LEVEL)

### Screening and early detection of pre-invasive cervical cancer

Visual inspection with acetic acid (VIA)  
Cytology (pap smear or liquid-based cytology)

## Noncommunicable diseases and mental health | Cardiovascular diseases | Cardiovascular risks

COMMUNITY HEALTH

HEALTH POST

PRIMARY HEALTHCARE CLINIC

FIELD HOSPITAL (CAMP LEVEL)

### Assessment of cardiovascular risks

Blood pressure measurement and assessment  
History and physical examination  
Point of care testing  
Basic laboratory tests

## Noncommunicable diseases and mental health | Cardiovascular diseases | Hypertension

COMMUNITY HEALTH

HEALTH POST

PRIMARY HEALTHCARE CLINIC

FIELD HOSPITAL (CAMP LEVEL)

### Prevention of hypertension

Integrated counselling on healthy diet, physical activity, weight management, and alcohol and tobacco use

### Longitudinal management of hypertension

Condition-specific nutrition assessment and counselling  
Oral ACE inhibitors  
Oral angiotensin II receptor blockers  
Oral calcium channel blockers  
Oral thiazide and thiazide-like diuretics  
Oral beta blockers (Custom Action)

COMMUNITY HEALTH

HEALTH POST

PRIMARY HEALTHCARE CLINIC

FIELD HOSPITAL (CAMP LEVEL)

Continuation from the page above

## Screening and diagnosis of hypertension

History and physical examination

Basic laboratory tests

## Management of hypertensive urgencies and emergencies

Electrocardiogram (ECG)

Intravenous adrenergic inhibitors  
Intravenous vasodilators

# Noncommunicable diseases and mental health | Cardiovascular diseases | Ischaemic heart disease

COMMUNITY HEALTH

HEALTH POST

PRIMARY HEALTHCARE CLINIC

FIELD HOSPITAL (CAMP LEVEL)

## Prevention of ischaemic heart disease

Brief behavioural counselling on tobacco cessation  
Integrated counselling on healthy diet, physical activity, weight management, and alcohol and tobacco use

## Screening and diagnosis of ischaemic heart disease

History and physical examination  
Point of care testing  
Basic laboratory tests  
Advanced laboratory tests  
Electrocardiogram (ECG)

## Longitudinal management of ischaemic heart disease

Condition-specific nutrition assessment and counselling

Oral ACE inhibitors  
Oral antiplatelets  
Oral beta blockers  
Oral nitrates  
Oral statins

# Noncommunicable diseases and mental health | Cardiovascular diseases | Ischaemic heart disease

[Return to H3 package overview](#) ←

COMMUNITY HEALTH

HEALTH POST

PRIMARY HEALTHCARE CLINIC

FIELD HOSPITAL (CAMP LEVEL)

Continuation from the page above

## Management of acute ischaemic heart disease

Supplemental oxygen  
Oral beta blockers  
Oral nitrates  
Oral statins  
Oral ACE inhibitors  
Oral anti-platelet

## Management of acute ischaemic heart disease

Intravenous analgesics  
Intravenous diuretics

Intravenous thrombolytic  
Intravenous nitrates

Intravenous anticoagulants

## Rehabilitation for ischaemic heart disease

Physical exercise training  
Exercise therapy and exercise prescription  
to improve or maintain cardiovascular  
fitness (Physical exercise training)

# Noncommunicable diseases and mental health | Cardiovascular diseases | Cerebrovascular disease

COMMUNITY HEALTH

HEALTH POST

PRIMARY HEALTHCARE CLINIC

FIELD HOSPITAL (CAMP LEVEL)

## Prevention of stroke

Brief behavioural counselling on tobacco  
cessation  
Integrated counselling on healthy diet,  
physical activity, weight management, and  
alcohol and tobacco use

## Early identification and diagnosis of stroke

History and physical examination  
Point of care testing

Electrocardiogram (ECG)

Echocardiogram



# Noncommunicable diseases and mental health | Cardiovascular diseases |

## Cerebrovascular disease

[Return to H3 package overview](#) ←

COMMUNITY HEALTH

HEALTH POST

PRIMARY HEALTHCARE CLINIC

FIELD HOSPITAL (CAMP LEVEL)

Continuation from the page above

### Longitudinal management of stroke

Oral antihypertensives  
Oral antiplatelets  
Oral statins

### Management of acute stroke

Oral antiplatelets  
Oral anticoagulants  
Intravenous insulin

# Noncommunicable diseases and mental health | Chronic respiratory diseases | Chronic obstructive pulmonary disease

COMMUNITY HEALTH

HEALTH POST

PRIMARY HEALTHCARE CLINIC

FIELD HOSPITAL (CAMP LEVEL)

Continuation from the page above

### Screening and diagnosis of COPD

History and physical examination  
Pulse oximetry  
Peak flow measurement

X-ray

### Management of acute exacerbation of COPD

Multidose inhaler with antimuscarinics, used with spacer  
Multidose inhaler with beta agonists, used with spacer  
Nebulized antimuscarinics  
Nebulized beta agonists  
Oral antimicrobials  
Oral corticosteroids  
Supplemental oxygen

Intravenous antimicrobials  
Intravenous corticosteroids

# Noncommunicable diseases and mental health | Chronic respiratory diseases | Chronic obstructive pulmonary disease

[Return to H3 package overview](#) ←

COMMUNITY HEALTH

HEALTH POST

PRIMARY HEALTHCARE CLINIC

FIELD HOSPITAL (CAMP LEVEL)

Continuation from the page above

## Management of acute exacerbation of COPD

Supplemental oxygen  
Inhaled beta agonists

Inhaled antimuscarinics

# Noncommunicable diseases and mental health | Chronic respiratory diseases | Asthma

COMMUNITY HEALTH

HEALTH POST

PRIMARY HEALTHCARE CLINIC

FIELD HOSPITAL (CAMP LEVEL)

Continuation from the page above

## Prevention of asthma

Integrated counselling on healthy diet, physical activity, weight management, and alcohol and tobacco use

## Screening and diagnosis of asthma

History and physical examination  
Pulse oximetry  
Peak flow measurement

X-ray

## Management of acute exacerbation of asthma

Supplemental oxygen  
Oral corticosteroids  
Metered-dose inhaler with antimuscarinics, used with spacer  
Metered-dose inhaler with beta agonists, used with spacer  
Nebulized antimuscarinics  
Nebulized beta agonists

## Longitudinal management of asthma

Counselling on personalised asthma management plan  
Inhaled beta agonists  
Inhaled corticosteroids  
Oral corticosteroids

## Noncommunicable diseases and mental health | Digestive diseases (see also communicable diseases) | Oral diseases and conditions

[Return to H3 package overview](#) ←

COMMUNITY HEALTH

HEALTH POST

PRIMARY HEALTHCARE CLINIC

FIELD HOSPITAL (CAMP LEVEL)

Continuation from the page above

### Prevention of oral diseases

Counselling on daily oral hygiene including toothbrushing with fluoride toothpaste

### Screening and diagnosis of oral diseases

History and physical examination

X-ray

### Longitudinal management of oral diseases

Glass ionomer cement restoration  
Simple composite resin restorations

Provide saline or disinfectant mouthwash

### Management of acute exacerbations of oral diseases

Oral analgesics  
Oral antimicrobials  
Antimicrobials in oral suspension (Custom Action)  
Analgesics in oral suspension (Custom Action)

Simple tooth extraction

Complex or multiple teeth extraction  
Incision and drainage

## Noncommunicable diseases and mental health | Digestive diseases (see also communicable diseases) | Diseases of the oesophagus, stomach, liver, gallbladder, pancreas and intestines

COMMUNITY HEALTH

HEALTH POST

PRIMARY HEALTHCARE CLINIC

FIELD HOSPITAL (CAMP LEVEL)

Continuation from the page above

### Prevention of gastrointestinal diseases

Counselling on daily oral hygiene including toothbrushing  
Condition-specific nutrition assessment and counselling  
fluoride toothpaste

# Noncommunicable diseases and mental health | Digestive diseases (see also communicable diseases) | Diseases of the oesophagus, stomach, liver, gallbladder, pancreas and intestines

[Return to H3 package overview](#) ←

COMMUNITY HEALTH

HEALTH POST

PRIMARY HEALTHCARE CLINIC

FIELD HOSPITAL (CAMP LEVEL)

Continuation from the page above

## Screening and diagnosis of gastrointestinal diseases

History and physical examination  
Point of care testing  
Basic laboratory tests

Advanced laboratory tests  
**Ultrasound**

X-ray  
Paracentesis

## Management of gastroesophageal reflux disease

Oral H2 receptor antagonist  
Oral proton pump inhibitors  
Intravenous proton pump inhibitors

## Management of gastritis, peptic ulcer disease and duodenitis

Oral antimicrobials  
Oral H2 receptor antagonists  
Oral proton pump inhibitors  
Intravenous antiemetics  
Intravenous fluids

**Blood and blood product transfusion**

## Management of ileus and intestinal obstruction

Nasogastric suction  
Intramuscular analgesics  
Intravenous analgesics  
Intravenous antimicrobials  
Intravenous fluids

Surgical procedures for bowel obstruction

## Management of appendicitis

Intravenous analgesics  
Intravenous antimicrobials  
Intravenous fluids

Open appendectomy

## Management of hernias (inguinal, femoral, abdominal)

Intravenous analgesics  
Intravenous antimicrobials

Nasogastric suction

**Hernioplasty**

# Noncommunicable diseases and mental health | Digestive diseases (see also communicable diseases) | Diseases of the oesophagus, stomach, liver, gallbladder, pancreas and intestines

[Return to H3 package overview](#) ←

COMMUNITY HEALTH

HEALTH POST

PRIMARY HEALTHCARE CLINIC

FIELD HOSPITAL (CAMP LEVEL)

Continuation from the page above

## Management of gallbladder and biliary diseases

Oral analgesic  
Intramuscular analgesic  
Intravenous analgesic

Intravenous antimicrobials

## Management of pancreatitis

Nasogastric suction  
Oral analgesics  
Oral antimicrobials  
Intravenous analgesics  
Intravenous antimicrobials  
Intravenous fluids

## Management of gastrointestinal bleeding

Oral proton pump inhibitors  
Intravenous analgesics  
Intravenous fluids  
Intravenous proton pump inhibitors

Blood and blood product transfusion

Surgical procedures for ulcer or perforation: laparotomy

## Management of ascites and acute complications

Diagnostic paracentesis  
Therapeutic paracentesis

Oral antimicrobials  
Oral diuretics  
Intravenous antimicrobials  
Intravenous diuretics

COMMUNITY HEALTH

HEALTH POST

PRIMARY HEALTHCARE CLINIC

FIELD HOSPITAL (CAMP LEVEL)

Continuation from the page above

## Prevention of diabetes mellitus

Integrated counselling on healthy diet, physical activity, weight management, and alcohol and tobacco use

## Screening and diagnosis of diabetes mellitus

History and physical examination  
Point of care testing

Basic laboratory tests (RBS, FBS & HbA1C)

## Management of hyperglycaemic and hypoglycaemic emergencies

Provide oral glucose solution  
Intravenous fluids  
Intravenous insulin in acute hyperglycaemia  
IV glucose (Custom Action)

Subcutaneous insulin  
Intravenous glucose

IV potassium (Custom Action)

## Longitudinal management of diabetes

Condition-specific nutrition assessment and counselling

Counselling on home glucose monitoring  
Counselling on insulin use (Custom Action)  
Counselling on foot care  
Provision of syringes (Custom Action)  
Provision of blood glucose monitoring device and test strips  
Diabetic foot examination  
Direct ophthalmoscopy  
Test for visual acuity  
Indirect ophthalmoscopy  
Oral hypoglycaemics  
Oral statins  
Oral ACE inhibitor  
Oral ARBs  
Subcutaneous insulin

## Noncommunicable diseases and mental health | Endocrine, metabolic, and autoimmune disorders | Thyroid disorders

[Return to H3 package overview](#) ←

COMMUNITY HEALTH

HEALTH POST

PRIMARY HEALTHCARE CLINIC

FIELD HOSPITAL (CAMP LEVEL)

### Screening and diagnosis of thyroid disorders

History and physical examination

Basic laboratory tests

Advanced laboratory tests

### Management of thyroid disorders

Condition-specific nutrition assessment and counselling

Oral iodine

Oral beta-adrenergic blockers  
Oral levothyroxine

Intravenous beta-adrenergic blockers

## Noncommunicable diseases and mental health | Genitourinary disorders | Noninfectious disorders of female genital tract

COMMUNITY HEALTH

HEALTH POST

PRIMARY HEALTHCARE CLINIC

FIELD HOSPITAL (CAMP LEVEL)

### Management of pelvic organ prolapse

Pelvis floor muscle training (Custom Action)

Ultrasound

Surgery for pelvic organ prolapse  
Pessary for pelvic organ prolapse (Custom Action)

# Noncommunicable diseases and mental health | Mental disorders | Depression

[Return to H3 package overview](#) ←

## COMMUNITY HEALTH

## HEALTH POST

## PRIMARY HEALTHCARE CLINIC

## FIELD HOSPITAL (CAMP LEVEL)

Continuation from the page above

### Assessment of depression

Assessment of self-harm and suicide risk in people with mental, neurological, and substance use conditions  
History and physical examination

Medical evaluation, including laboratory testing, for alternative diagnoses (Basic laboratory tests)

### Management of depression

Psychoeducation to reduce stress and strengthen social support (Psychoeducation and psychosocial support (including for patient's carers))  
Psychoeducation to promote functioning and activities for daily living in the community in people with mental health conditions (Custom Action)  
Basic psychosocial support for people with mental health conditions and their caretakers (Custom Action)

Assessment of suicide risk and appropriate referral for services when needed (Custom Action)

Provide cognitive behavioural therapy or interpersonal therapy

Referral for specialized mental health and other needed services when needed  
Oral antidepressants

# Noncommunicable diseases and mental health | Mental disorders | Anxiety disorders (including PTSD)

## COMMUNITY HEALTH

## HEALTH POST

## PRIMARY HEALTHCARE CLINIC

## FIELD HOSPITAL (CAMP LEVEL)

### Assessment of anxiety disorders

Assessment of self-harm and suicide risk in people with mental, neurological, and substance use conditions

History and physical examination

Medical evaluation, including laboratory testing, for alternative diagnoses (Basic laboratory tests)

Advanced laboratory tests



## Noncommunicable diseases and mental health | Mental disorders | Anxiety disorders (including PTSD)

[Return to H3 package overview](#) ←

COMMUNITY HEALTH

HEALTH POST

PRIMARY HEALTHCARE CLINIC

FIELD HOSPITAL (CAMP LEVEL)

Continuation from the page above

### Management of anxiety disorders

Psychoeducation to reduce stress and strengthen social support (Psychoeducation and psychosocial support (including for patient's carers))

Psychoeducation to promote functioning and activities for daily living in the community in people with mental health conditions (Custom Action)

Basic psychosocial support for people with mental health conditions and their caretakers (Custom Action)

Psychological first aid for recent exposure to traumatic stressors (Custom Action)

Referral for specialized mental health and other needed services

Provide cognitive behavioural therapy or interpersonal therapy

Oral antidepressants for second-line treatment for PTSD

Oral antidepressants for generalized anxiety disorder and panic disorder

## Noncommunicable diseases and mental health | Mental disorders | Psychotic disorders

### Assessment of psychotic disorders

Assessment of suicide risk and appropriate referral for services when needed (Assessment of self-harm and suicide risk in people with mental, neurological, and substance use conditions)

Referral for mental health and other needed services (protection, livelihoods) (Referral for self-harm and suicide risk in people with mental, neurological, and substance use conditions)

History and physical examination

Basic laboratory tests

COMMUNITY HEALTH

HEALTH POST

PRIMARY HEALTHCARE CLINIC

FIELD HOSPITAL (CAMP LEVEL)

Continuation from the page above

**Management of psychotic disorders**

Psychoeducation to reduce stress and strengthen social support (Psychoeducation and psychosocial support (including for patient's carers))  
 Psychoeducation to promote functioning and activities for daily living in the community in people with mental health conditions (Custom Action)  
 Basic psychosocial support for people with mental health conditions and their caretakers (Custom Action)

Maintenance treatment for chronic psychosis, including long-acting anti-psychotic medications (Custom Action)  
 Maintenance treatment for chronic psychosis, including long-acting anti-psychotic medications (Custom Action)

Provide cognitive behavioural therapy or interpersonal therapy for psychotic disorders

Oral anticholinergic medications  
 Intramuscular antipsychotics  
 Oral antipsychotics

Intravenous antipsychotics

**Noncommunicable diseases and mental health | Mental disorders | Bipolar disorders**

COMMUNITY HEALTH

HEALTH POST

PRIMARY HEALTHCARE CLINIC

FIELD HOSPITAL (CAMP LEVEL)

**Assessment of bipolar disorder**

Assessment of self-harm and suicide risk in people with mental, neurological, and substance use conditions

History and physical examination

Medical evaluation, including laboratory testing, for alternative diagnoses (Basic laboratory tests)

**Management of bipolar disorders**

Basic psychosocial support for people with mental health conditions and their caretakers (Psychoeducation and psychosocial support (including for patient's carers))  
 Referral for self-harm and suicide risk in people with mental, neurological, and substance use conditions

Provide cognitive behavioural therapy or interpersonal therapy for bipolar disorders

Oral anticholinergic medications  
 Oral mood stabilizer  
 Oral antipsychotics  
 Oral anticonvulsants

COMMUNITY HEALTH

HEALTH POST

PRIMARY HEALTHCARE CLINIC

FIELD HOSPITAL (CAMP LEVEL)

Continuation from the page above

## Assessment of self-harm/suicide risk

Assessment of self-harm and suicide risk in people with mental, neurological, and substance use conditions  
History and physical examination of those who attempted suicide and self-harmed for other mental and physical health conditions

## Management of self-harm / suicide risk

Psychosocial support for caregivers

Assessment of suicide risk and appropriate referral for services when needed (Referral for self-harm and suicide risk in people with mental, neurological, and substance use conditions)

# Noncommunicable diseases and mental health | Child and adolescent mental health |

## Promotive and preventive mental health services for adolescents

COMMUNITY HEALTH

HEALTH POST

PRIMARY HEALTHCARE CLINIC

FIELD HOSPITAL (CAMP LEVEL)

## Promotive and preventive mental health services for adolescents

Problem solving and interpersonal skills training for adolescent

## Management of emotional problems and disorders in children and adolescents

Support and carer skills training for carers of children and adolescents with developmental disabilities (Caregiver skills training)  
Basic psychosocial support for people with mental health conditions and their caretakers (Psychoeducation for patients and caregivers)

Psychosocial interventions for children and adolescents with emotional disorders

Referral for specialized mental health and other needed services

Oral fluoxetine for moderate to severe depression in adolescents

COMMUNITY HEALTH

HEALTH POST

PRIMARY HEALTHCARE CLINIC

FIELD HOSPITAL (CAMP LEVEL)

Continuation from the page above

## Screening and diagnosis of alcohol use disorders

---

History and physical examination  
Systematic screening for substance use among at risk population  
Basic laboratory tests

## Screening and diagnosis of drug use disorders

---

History and physical examination

## COMMUNITY HEALTH

## HEALTH POST

## PRIMARY HEALTHCARE CLINIC

## FIELD HOSPITAL (CAMP LEVEL)

### Screening and diagnosis of epilepsy

Continuation from the page above

History and physical examination

Basic laboratory tests

Electrocardiogram (ECG)  
Lumbar puncture

### Management of epilepsy and seizures

Counselling on avoiding high risk activities

(Custom Action)

Education of family members on first aid

(Custom Action)

Psychoeducation and psychosocial support

(including for patient's carers)

Initial resuscitation and stabilization after seizure (Custom Action)

Intramuscular benzodiazepines

Oral antiseizures

Oral antipyretics

Oral benzodiazepines (Custom Action)

Oral glucose (Custom Action)

Intravenous benzodiazepines

IV antiepileptics (Custom Action)

IV antipyretics (Custom Action)

IV glucose (Custom Action)

### Screening and diagnosis of eye diseases and vision impairment

Test for visual acuity

Tonometry

Slit lamp examination

### Management of refractive error, amblyopia and strabismus

Provide spectacles

### Screening and diagnosis of inflammatory skin disorders

History and physical examination

### Management of dermatitis (atopic, contact, seborrheic)

Oral corticosteroids

Topical antifungals

Topical corticosteroids

Topical emollients

Oral antihistamines (Custom Action)



## **Violence and injury**

---

COMMUNITY HEALTH

HEALTH POST

PRIMARY HEALTHCARE CLINIC

FIELD HOSPITAL (CAMP LEVEL)

Continuation from the page above

## Prevention and early recognition of violence

Clinical assessment for signs of neglect, maltreatment or abuse (History and complete physical examination for survivors of violence, including documentation and evidence collection as appropriate)

## Safe and confidential access to health services for conditions related to violence

Basic psychosocial support including stress reduction techniques (First line support)  
 Provide first-line support  
 Identification and documentation of signs and symptoms of maltreatment (Document signs and symptoms of child maltreatment)  
 Psychological first aid for recent exposure to trauma (Custom Action)  
 Referral for the management of mental illness  
 Referral to address urgent safety needs

## Identification of child maltreatment and youth violence

Clinical assessment for signs of neglect, maltreatment or abuse (History and physical examination for child maltreatment and youth violence)

## Management of child maltreatment and youth violence

Referral for the management of mental illness  
 Counselling and referral to address urgent safety needs (Custom Action)

Referrals to other health services and support services for survivors of violence (Custom Action)

COMMUNITY HEALTH

HEALTH POST

PRIMARY HEALTHCARE CLINIC

FIELD HOSPITAL (CAMP LEVEL)

Continuation from the page above

**Identification of violence against older people**

Identification and documentation of signs and symptoms of maltreatment (Custom Action)

Clinical assessment for signs of neglect, maltreatment or abuse (History and physical examination for neglect, maltreatment or abuse)

**Management of violence against older people**

Psychoeducation and psychosocial support (including for patient's carers)  
Psychological first aid for recent exposure to trauma

Clinical assessment for mental disorders in older people

Referral to address urgent safety needs  
Referral for the management of mental illness

Referrals to other health services and support services for survivors of violence (Referral to social care services)



COMMUNITY HEALTH

HEALTH POST

PRIMARY HEALTHCARE CLINIC

FIELD HOSPITAL (CAMP LEVEL)

Continuation from the page above

**Counselling for injury prevention**

Counselling on safety and injury prevention  
Counselling on vehicular child restraint and road safety behaviors

**General approach to serious injury**

<p>Perform temperature management including non-invasive cooling and warming</p>	<p>History and physical examination</p>	<p>Basic laboratory tests</p>	<p>X-ray Point of care ultrasound</p>
<p>Wound care External haemorrhage control including tourniquet application and haemostatic agents (Custom Action)</p>	<p>Spine immobilization <b>Pelvic binding</b> Suture repair of lacerations Surgical wound debridement Manual airway repositioning (Basic airway management) Oral and nasal airway placement (Basic airway management) Continuous vital sign monitoring Supplemental oxygen Oral volume resuscitation Oral antimicrobials Oral analgesia Intramuscular analgesia Intramuscular anxiolysis Intramuscular tetanus toxoid Topical analgesia Intravenous analgesics Intravenous fluids</p>	<p>Intravenous antimicrobials Intravenous anxiolytics Intravenous antithrombolytic Intravenous sedatives</p>	<p>Blood and blood product transfusion Bag-valve-mask ventilation Endotracheal intubation Surgical airway  Intranasal analgesia Intranasal anxiolysis</p>

**Management of head and face injury (including ocular injury)**

<p>Oral antimicrobials Intramuscular tetanus toxoid</p>	<p>Intravenous antimicrobials Intravenous osmotic medications to reduce intracranial pressure</p>
---	---

COMMUNITY HEALTH

HEALTH POST

PRIMARY HEALTHCARE CLINIC

FIELD HOSPITAL (CAMP LEVEL)

Continuation from the page above

**Management of head and face injury (including ocular injury)**

Irrigation and debridement  
Suture repair of head and facial lacerations

Burr hole

**Management of spinal injury (including neck injury)**

Spine immobilization  
Intravenous fluids

**Management of thoracoabdominal injury**

Wound care

Electrocardiogram (ECG)

Intravenous antimicrobials for penetrating abdominal injury requiring surgery

Point of care ultrasound

Blood and blood product transfusion  
Diagnostic peritoneal lavage

**Management of pelvic injury (including urogenital)**

Wound care

Speculum examination  
Pelvic binding

External haemorrhage control with tourniquet application

Point of care ultrasound

Blood and blood product transfusion

**Management of extremity injury**

External dislocation reduction  
External fracture fixation  
Fasciotomy  
Internal fracture fixation  
Irrigation and debridement for open fractures  
Nonoperative reduction and immobilization  
Operative soft tissue repair  
Pelvic binding  
Provision of orthotics and prosthetics  
Splinting  
Surgical management of amputation  
Traction  
Wound care  
Positioning and active and passive movements to prevent complications (Custom Action)

## Violence and injury | Injury | Mechanical injury

[Return to H3 package overview](#) ←

COMMUNITY HEALTH

HEALTH POST

PRIMARY HEALTHCARE CLINIC

FIELD HOSPITAL (CAMP LEVEL)

### Management of wounds (excluding burns)

Continuation from the page above

Home wound care

Outpatient wound care  
Foreign body removal  
*Suture repair of laceration*  
Intramuscular tetanus toxoid

## Violence and injury | Injury | Thermal and chemical injuries (burns)

COMMUNITY HEALTH

HEALTH POST

PRIMARY HEALTHCARE CLINIC

FIELD HOSPITAL (CAMP LEVEL)

### Counselling for prevention of burns

Counselling for prevention of burns

### Management of burns

Home wound care

Clinical assessment of burns  
Point of care testing  
Basic laboratory tests  
Decontamination  
Outpatient wound care  
*Basic airway management*  
  
*Supplemental oxygen*  
Dressings for superficial and partial thickness burns  
Intramuscular tetanus toxoid

Surgical wound debridement (Wound debridement)

Escharotomy  
Foreign body removal  
Bag-valve-mask ventilation  
Endotracheal intubation  
Surgical airway

## Violence and injury | Injury | Envenomation injuries

COMMUNITY HEALTH

HEALTH POST

PRIMARY HEALTHCARE CLINIC

FIELD HOSPITAL (CAMP LEVEL)

Continuation from the page above

### Counselling for prevention of bite and envenoming injuries

Counselling on prevention of bite and envenoming injuries

### Management of bites and envenoming injuries

#### Wound care

**Intramuscular rabies immunoglobulin**  
 Intramuscular tetanus toxoid  
 Oral antihistamines (Custom Action)  
 Oral corticosteroids (Custom Action)  
  
 IV fluids (Custom Action)

IV antihistamines (Custom Action)  
 IV corticosteroids (Custom Action)

Intramuscular rabies vaccine  
 Intramuscular tetanus immunoglobulin  
 Intravenous antivenin

## Violence and injury | Injury | Environmental exposures (including drowning)

COMMUNITY HEALTH

HEALTH POST

PRIMARY HEALTHCARE CLINIC

FIELD HOSPITAL (CAMP LEVEL)

Continuation from the page above

### Prevention of environmental exposures (including drowning)

Counselling on household safety for infants and young children  
 Counselling on water safety

### Management of environmental exposures (including drowning)

#### Decontamination

Temperature management including non-pharmacologic cooling and warming  
  
 Oral electrolytes  
**Supplemental oxygen**

Intravenous fluids  
**Intravenous antiseizures**  
**Intravenous benzodiazepines**

COMMUNITY HEALTH

HEALTH POST

PRIMARY HEALTHCARE CLINIC

FIELD HOSPITAL (CAMP LEVEL)

Continuation from the page above

**Prevention of poisoning and toxic exposures**

Counselling on household safety for infants and young children

**Diagnosis of poisoning and toxic exposures**

Decontamination

Pulse oximetry  
Electrocardiogram (ECG)

Point of care testing  
Basic laboratory tests  
Advanced laboratory tests  
X-ray

**Management of poisoning and toxic exposures**

Temperature management including non-pharmacologic cooling and warming

Basic airway management  
Endotracheal intubation  
Defibrillation  
Supplemental oxygen  
Oral antidotes and reversal medications  
Oral antipyretics  
Oral electrolytes

Intravenous fluids  
Intravenous antiseizures  
Intravenous benzodiazepines



## **Communicable diseases**

---

# Communicable diseases | Communicable diseases (excluding NTDs) | HIV

[Return to H3 package overview](#) ←

COMMUNITY HEALTH

HEALTH POST

PRIMARY HEALTHCARE CLINIC

FIELD HOSPITAL (CAMP LEVEL)

Continuation from the page above

## Prevention of HIV

Counselling on safe sex, risk reduction and condoms  
Male condoms

Counselling on partner notification, diagnosis and treatment  
Post-exposure prophylaxis (PEP)  
Pre-exposure prophylaxis (PrEP)

Voluntary medical male circumcision (VMMC)

## Screening and diagnosis of HIV

History and physical examination  
Point of care testing

## Management of HIV

Condition-specific nutrition assessment and counselling  
Tuberculosis preventive therapy (TPT) - Refer to ART Center  
Oral antimicrobials for prevention of opportunistic infections in HIV - Refer to ART Center  
Oral antiretrovirals (ARVs) for first line treatment - Refer to ART Center  
Oral antiretrovirals (ARVs) for second or third line treatment - Refer to ART Center

# Communicable diseases | Communicable diseases (excluding NTDs) | Tuberculosis

COMMUNITY HEALTH

HEALTH POST

PRIMARY HEALTHCARE CLINIC

FIELD HOSPITAL (CAMP LEVEL)

Continuation from the page above

## Prevention of tuberculosis

Conduct active case finding for TB among at-risk populations  
Perform routine contact tracing to identify individuals exposed to TB

Vaccination: BCG

# Communicable diseases | Communicable diseases (excluding NTDs) | Tuberculosis

[Return to H3 package overview](#) ←

COMMUNITY HEALTH

HEALTH POST

PRIMARY HEALTHCARE CLINIC

FIELD HOSPITAL (CAMP LEVEL)

Continuation from the page above

## Case detection of tuberculosis

Screening for tuberculosis among clinical at risk groups and vulnerable populations to exclude active TB disease

## Diagnosis of tuberculosis

History and physical examination

Basic laboratory tests

Ultrasound

X-ray

# Communicable diseases | Communicable diseases (excluding NTDs) | Malaria

COMMUNITY HEALTH

HEALTH POST

PRIMARY HEALTHCARE CLINIC

FIELD HOSPITAL (CAMP LEVEL)

Continuation from the page above

## Screening and diagnosis malaria

History and physical examination

Point of care testing

Basic laboratory tests

## Management of malaria

Clinical assessment for danger signs and early referral (Custom Action)

Oral glucose (or glucose-containing food/liquid) (Custom Action)

Oral antimalarials  
Oral antimalarials for treatment completion of severe malaria

Oral and rectal antipyretics (Oral antipyretics for malaria)

Rectal antimalarials for pre-referral empiric therapy

Intramuscular antimalarials for pre-referral empiric therapy

Supplemental oxygen (Custom Action)

Intravenous antimalarials for initial phase of severe malaria

Intravenous glucose for hypoglycaemia

IV antipyretics (Custom Action)

Blood and blood product transfusion



COMMUNITY HEALTH

HEALTH POST

PRIMARY HEALTHCARE CLINIC

FIELD HOSPITAL (CAMP LEVEL)

Continuation from the page above

**Prevention of lower respiratory infections**

Counselling on WASH activities including clean drinking water, sanitation and hygiene

Vaccination: COVID-19  
 Vaccination: diphtheria-tetanus-pertussis-containing vaccines (DTaP) for infants  
 Vaccination: haemophilus influenzae type b (Hib)  
 Vaccination: measles  
 Vaccination: pneumococcal conjugate  
 Vaccination: seasonal influenza  
 Vaccination: BCG

Appropriate isolation for high-risk communicable diseases (Custom Action)

**Screening and diagnosis of lower respiratory infections**

Clinical assessment for danger signs and early referral (Clinical assessment for early recognition of need for referral)

Pulse oximetry  
 History and physical examination  
 Point of care testing

Isolation for high risk communicable diseases

Basic laboratory tests  
 Advanced laboratory tests

X-ray

**Management of acute lower respiratory infections**

Supplemental oxygen  
 Inhaled bronchodilators  
 Oral antimicrobials  
 Oral antipyretics  
 Oral corticosteroids  
 Intramuscular antimicrobials  
 Intravenous antimicrobials

Intubation and mechanical ventilation (Invasive mechanical ventilation)

Inhaled beta agonist  
 Intravenous corticosteroids

Therapeutic thoracentesis  
 Intubation (Custom Action)  
 Non-invasive mechanical ventilation  
 Nebulized medications

COMMUNITY HEALTH

HEALTH POST

PRIMARY HEALTHCARE CLINIC

FIELD HOSPITAL (CAMP LEVEL)

Continuation from the page above

**Prevention of enteric infections**

Counselling on WASH services (use of safe water supply; sanitation and hygiene)  
Condition-specific nutrition assessment and counselling

**Screening and diagnosis of enteric infections**

History and physical examination  
Point of care testing

**Management of enteric infections**

Referral to health facility for the management of sever dehydration  
Oral zinc supplementation  
Oral rehydration solution  
Oral antimicrobials  
Intramuscular antimicrobials agents  
Intravenous fluids

**Prevention of cholera**

Counselling about handwashing with soap  
Counselling on WASH services (use of safe water supply; sanitation and hygiene)

**Screening and diagnosis of cholera**

Point of care testing - Applicable at Sentinel Sites  
History and physical examination

**Management of cholera**

Oral rehydration solution  
Oral antipyretics  
Oral antimicrobials  
Oral Zinc supplementation  
Intravenous fluids  
Intravenous glucose

# Communicable diseases | Communicable diseases (excluding NTDs) | Sexually transmitted and reproductive tract infections

[Return to H3 package overview](#) ←

COMMUNITY HEALTH

HEALTH POST

PRIMARY HEALTHCARE CLINIC

FIELD HOSPITAL (CAMP LEVEL)

Continuation from the page above

## Prevention of STIs and reproductive tract infections

Counselling on STI prevention, risk reduction, and safer sex  
Promote and provide female condoms  
Promote and provide male condoms

Post-exposure prophylaxis (PEP) for STIs  
Risk assessment with sexual history and risk factors

Voluntary medical male circumcision (VMMC) (Custom Action)

## Screening and diagnosis of STIs and reproductive tract infections

Point of care testing  
Basic laboratory tests  
Speculum examination  
Syndromic diagnosis of STIs (History and physical examination for sexually transmitted and reproductive tract infections)  
History and physical examination  
Genital examination including specimen collection  
Bimanual examination

Counselling on self-collection of samples for STI laboratory testing

Anoscopy

## Management of STIs and reproductive tract infections

Counselling on self-collection of samples for STI laboratory testing  
Oral antimicrobials  
Intramuscular antimicrobials  
Vaginal antimicrobials  
Oral analgesics

# Communicable diseases | Communicable diseases (excluding NTDs) | Urinary tract infections

COMMUNITY HEALTH

HEALTH POST

PRIMARY HEALTHCARE CLINIC

FIELD HOSPITAL (CAMP LEVEL)

## Screening and diagnosis of urinary tract infections

History and physical examination  
Point of care testing

Basic laboratory tests  
Advanced laboratory tests

Ultrasound

# Communicable diseases | Communicable diseases (excluding NTDs) | Urinary tract infections

[Return to H3 package overview](#) ←

COMMUNITY HEALTH

HEALTH POST

PRIMARY HEALTHCARE CLINIC

FIELD HOSPITAL (CAMP LEVEL)

Continuation from the page above

## Management of urinary tract infections

Intramuscular antimicrobials  
Oral analgesics  
Oral antimicrobials  
Oral antipyretics

Transurethral catheterization (Custom Action)

Intravenous antimicrobials  
Intravenous antipyretics  
Transurethral catheterization (Custom Action)

Suprapubic catheterization (Custom Action)

# Communicable diseases | Communicable diseases (excluding NTDs) | Central nervous system (CNS) infections

COMMUNITY HEALTH

HEALTH POST

PRIMARY HEALTHCARE CLINIC

FIELD HOSPITAL (CAMP LEVEL)

## Management of brain abscess and encephalitis

Oral antimicrobials chemoprophylaxis for contacts

## Screening and diagnosis of meningitis

History and physical examination  
Clinical assessment for early recognition of the need for referral

Basic laboratory tests

Advanced laboratory tests  
Lumbar puncture

## Management of meningitis

Intravenous antimicrobials for meningitis  
Intravenous antiseizures for meningitis  
Intravenous corticosteroids for meningitis

# Communicable diseases | Communicable diseases (excluding NTDs) | Ear, nose, and throat (ENT) infections

[Return to H3 package overview](#) ←

COMMUNITY HEALTH

HEALTH POST

PRIMARY HEALTHCARE CLINIC

FIELD HOSPITAL (CAMP LEVEL)

## Screening and diagnosis of ENT infections

Continuation from the page above

History and physical examination  
Otoscopy  
Basic laboratory tests

X-ray

## Management of ENT infections

Nasal decongestants  
Oral antihistamines  
Oral antimicrobials for ENT infections  
Oral analgesics  
Intranasal corticosteroids for ENT infections

Intravenous analgesics  
Intravenous antimicrobials for ENT infections

## Management of ear infections and complications

Dry wicking  
Intramuscular antimicrobials  
Intranasal corticosteroids  
Oral analgesics  
Oral antimicrobials  
Topical antimicrobials

Intravenous analgesics  
Intravenous antimicrobials for ear infections

# Communicable diseases | Communicable diseases (excluding NTDs) | Eye infections

COMMUNITY HEALTH

HEALTH POST

PRIMARY HEALTHCARE CLINIC

FIELD HOSPITAL (CAMP LEVEL)

## Prevention of eye infections

Counselling on WASH activities including clean drinking water, sanitation and hygiene

## Screening and diagnosis of eye infections

Slit lamp examination - Available at Eye Clinics  
Tonometry - Available at Eye Clinics  
Black light assessment with fluorescein (Custom Action) - Available at Eye Clinics

History and physical examination

Basic laboratory tests

Direct ophthalmoscopy

COMMUNITY HEALTH

HEALTH POST

PRIMARY HEALTHCARE CLINIC

FIELD HOSPITAL (CAMP LEVEL)

Continuation from the page above

**Management of eye infections**

Oral antimicrobials  
Topical antimicrobials

Intravenous antimicrobials

COMMUNITY HEALTH

HEALTH POST

PRIMARY HEALTHCARE CLINIC

FIELD HOSPITAL (CAMP LEVEL)

Continuation from the page above

**Screening and diagnosis of skin and soft tissue infections**

History and physical examination

Basic laboratory tests  
**Ultrasound**

**Management of skin and soft tissue infections**

Oral analgesics  
Oral antimicrobials for skin and soft tissue infections  
Topical antimicrobials for skin and soft tissue infections  
Topical antimicrobials for skin infestation (scabies and lice) (Custom Action)

Incision and drainage  
Intravenous antimicrobials

# Chapter 4: Minimum Staffing

## Minimum Staff Required

65-66

Primary Healthcare

Field Hospitals

# Staffing Norms | Primary Health Care

[Return to H3 package overview](#) ←

Staffing Category	Health Post (HP)	Primary Healthcare Clinic (PHC)	Comment
PHC Manager		1	
Medical Doctor	1	5	A medical Doctor should be present whenever the facility is open for service
Sub-assistant Community Medical Officer (SACMO)/Medical Assistant	2	4	
Family Planning Focal Person	0	1	A focal person in HP should be available for the family planning
Nurse	1	5	A Nurse should be present whenever the facility is open for service
Midwife (ANC, Delivery, PNC)	1	6	A Midwife should be present whenever the facility is open for service
Pharmacist	0	1	
Dispenser	1	2	
Laboratory Technician	0	1	In Health Post for only RTD test
Laboratory Assistant	0	1	
Focal Person for Reporting and Data Management	1	1	For the registry as well
Community Health Worker Supervisor	As required	As required	
Community Health/Psychological Worker	As required	As required	
Ambulance Driver		2	
Vaccinator (for the fixed vaccination sites)	2	2	
Psychologist		1	
Other Support Staff and Security	0	As required	



# Staffing Norms | Field Hospitals

[Return to H3 package overview](#) ←

Category	Number of Minimum Staff	Comments
Facility Manager/ Hospital Lead	1	
Residential Medical Officer	1	One Minimum, organization can increase as per their HR policies
<b>Consultant/ Specialist</b>		
Medicine	1	Doctors with Post-Graduate Degrees/ training equivalent 8 based on the available services (H3P)
Surgery	1	
Gyne and Obs	1	
Anesthesiologist and Pain Medicine	1	
Pediatrics	1	
Cardiology and C.C.U	1	
Orthopedics and Traumatology	1	
Radiology and Imaging	1	
<b>Assistant Surgeon/ Medical Officer (Doctors)</b>		
Medicine	2	
Surgery	2	
Gyne and Obs	2	
Anesthesiologist and Pain Medicine	2	
Pediatrics	2	
Cardiology and C.C.U	2	
Orthopedics and Traumatology	1	
Radiology and Imaging	1	
Dental Surgeon	1	Optional (if the services is available)

Note: Organizations may hire the required administrative staff as per their policy.

Category	Number of Minimum Staff	Comments
Emergency Medical Officer	4	
Nursing Supervisor	1	
Senior Staff Nurse	Based on the number of inpatient beds and OPD clinics	1 per 5 beds per shift, e.g., 3 per 5 beds considering 3 shifts per day + 1 for OPD
Midwife	Based on the number of beds	1 midwife per 6 beds per shift
Statistician	1	
Medical Technologist (EPI)	1	
Medical Technologist (Lab)	4	
Medical Technologist (Radiography)	2	
Medical Technologist (Dental)	1	Optional (if the services is available)
Medical Technologist (phsiotherapy)	1	
Medical Technologist (S.I.T)	1	Optional
Medical Technologist (Blood Bank)	1	
Pharmacist	1	1 with 3 drug dispensers
Storekeeper	2	
Assitant Sataatistician/ Data Entry Operator	1	
Ticket Clerk/ Traige	2	
Drug Dispenser	3	
WASH & IPC focal	Need to institutionalized	
mhGAP trained doctors	1	
Ambulance Drivers	Based on the number of ambulances	

