

23 October 2024

KEY MESSAGES:

- A cyclonic storm called ‘Dana’ has formed over the East-Central Bay of Bengal moving in a West-Northwest direction and is likely to intensify.
- Various forecasting models suggest that the cyclone may make landfall near North Odisha and West Bengal coasts between Puri and Sagar Island, India, from the evening of 24 October to the morning of 25 October.
- Cox’s Bazar, particularly the Ukhiya and Teknaf regions, may experience gusty winds exceeding 60 km/h on 23 and 24 October.

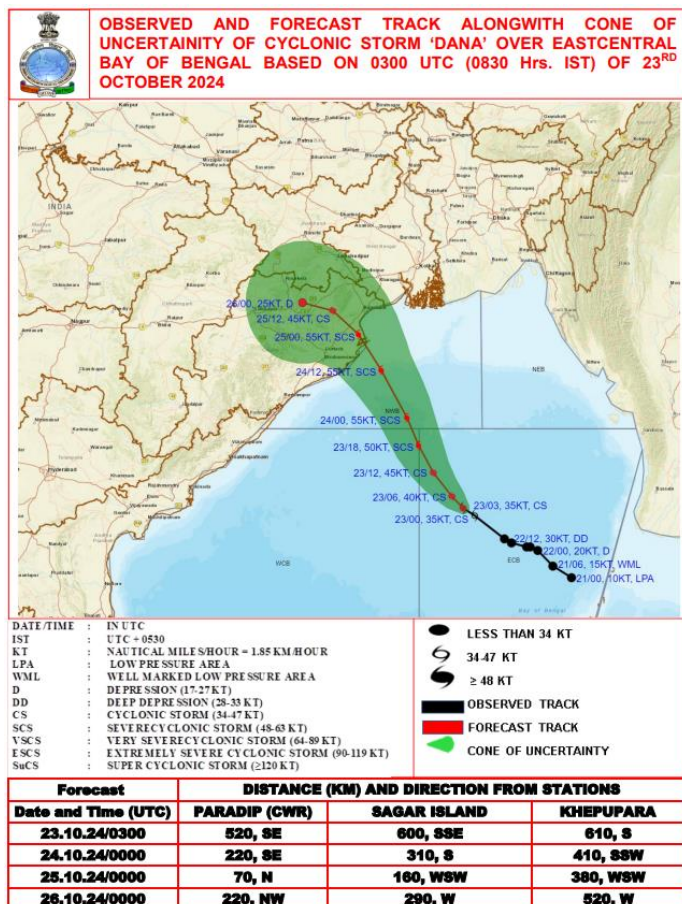
The Bangladesh Meteorological Department’s 5th Special Weather Bulletin¹, as of 13:30 BTS, 23 October, reports that Cyclonic Storm 'Dana' is located over the East-Central Bay of Bengal, approximately 665 km West-Southwest of Chattogram Port, 600 km West-Southwest of Cox’s Bazar Port, 640 km South-Southeast of Mongla Port and 595 km South-Southeast of Payra Port. The storm is moving in a West-Northwest direction and is likely to intensify further, with maximum sustained wind speeds reaching 62 km/h, and rising to 88 km/h in gusts/squalls. All maritime ports have hoisted Signal No 3.

The Indian Meteorological Department indicates that it is very likely to cross the North Odisha and West Bengal coasts between Puri and Sagar Island around 18:00 BTS on 24 October to 00:00 BTS on 25 October, as a severe cyclonic storm with a wind speed of 100-110 km/h and gusting at 120 km/h (Figure 1). The satellite models Ventusky and Zoom Earth have also shown the 100-120 km/h wind gusts associated with the cyclonic storm along the Indian coast (Figure 2).

Both the European Centre for Medium-Range Weather Forecasts (ECMWF) and the Global Forecast System (GFS) have provided a similar forecast for the cyclone’s track (Figure 3).

Despite the forecast of a minimum impact in Bangladesh, the estimated daily rainfall data for Cox’s Bazar district, as per the BMD-RIMES INSTANT Portal from 10:00 BTS, 23 October suggests that the area may experience moderate to strong wind gusts (above 60 km/h) from 23 to 25 October which may cause some damage/destruction in the Rohingya camps. Rainfall, however, is expected to remain minimal, with no significant accumulation across most sub-districts (Figure 4).

Figure 1: Forecasted track of Cyclone ‘Dana’ by Indian Meteorological Department



¹ BMD’s Special Weather Bulletin NO. 5 -23.10.2024

Figure 2: Wind gust forecast model by Ventusky and Zoom

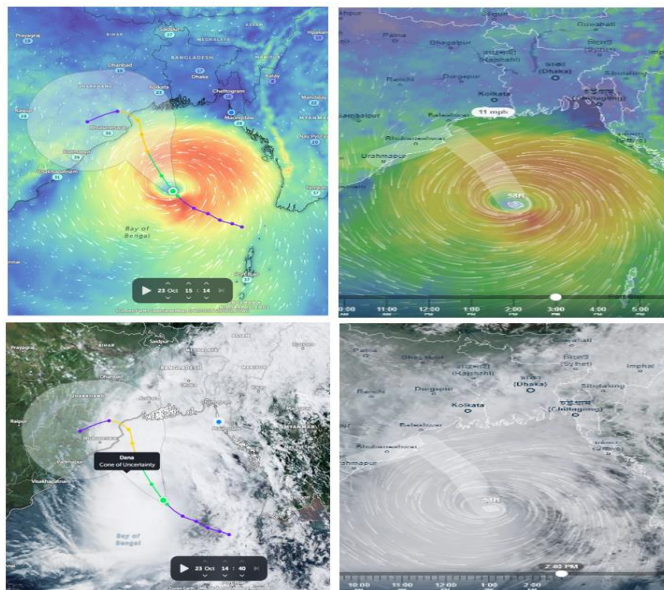
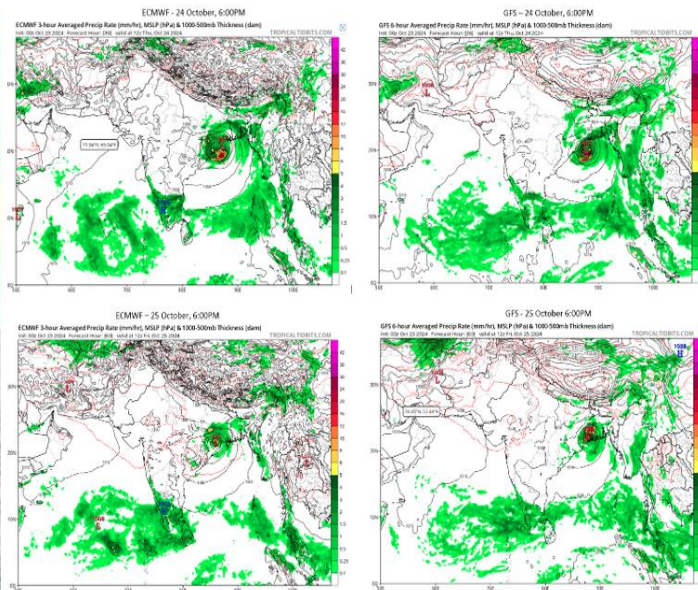


Figure 3: Forecasted cyclone track by ECMWF & GFS



Considering the vulnerability of the Rohingya camps, the ISCG advises that Sectors, EPR WG members, and relevant agencies **carry out emergency preparedness actions**, including **timely dissemination of early warning messages, alerts, advisories, and tie down shelters especially prior to the gusty winds.**

Importantly, the **most vulnerable should be relocated to safe places** to reduce the potential for negative consequences, significant damage, and loss of life. Actions shall be carried out closely with Sector Lead agencies and camp DMCs.

Figure 4: 5-day rainfall and wind gust forecast in Cox's Bazar

5-day Rainfall Wind-Gust Forecast in Cox's Bazar District as of 23 October 2024

Source: [Integrated Forecast Dissemination Portal \(INSTANT\) \(rimes.int\)](https://www.rimes.int/)

Rainfall Forecast

Sub-District	23 Oct	24 Oct	25 Oct	26 Oct	27 Oct
CXB Sadar	0mm	0mm	0mm	0mm	0mm
Ukhiya	5mm	0mm	0mm	0mm	0mm
Teknaf	3mm	3mm	0mm	0mm	0mm
Ramu	0mm	0mm	0mm	0mm	0mm
Maheshkhali	0mm	0mm	0mm	0mm	0mm
Chakaria	0mm	0mm	0mm	0mm	0mm
Pekua	0mm	0mm	0mm	0mm	0mm
Kutubdia	0mm	0mm	0mm	0mm	0mm

Rain Thresholds

- Daily accumulated precipitation < 22mm
 - 22mm <= Daily accumulated precipitation < 48mm
 - 48mm <= Daily accumulated precipitation < 88mm
 - Daily accumulated precipitation >= 88mm
- NB. Click on the map to know detail information

Wind-Gust Forecast

Sub-District	23 Oct	24 Oct	25 Oct	26 Oct	27 Oct
CXB Sadar	45kph	56kph	45kph	17kph	21kph
Ukhiya	65kph	66kph	42kph	22kph	23kph
Teknaf	66kph	68kph	42kph	22kph	23kph
Ramu	58kph	61kph	45kph	18kph	23kph
Maheshkhali	55kph	67kph	47kph	24kph	21kph
Chakaria	45kph	56kph	45kph	17kph	21kph
Pekua	27kph	48kph	38kph	14kph	15kph
Kutubdia	37kph	61kph	46kph	22kph	20kph

Wind Gust Thresholds

- Hourly gust < 40km/h
 - 40km/h <= Hourly gust < 60km/h
 - 60km/h <= Hourly gust < 80km/h
 - Hourly gust >= 80km/h
- NB. Click on the map to know detail information

For harmonized preparedness messages, the ISCG advises using the [Cyclone Preparedness Field Discussion Guide](#) approved by the RRRC. This guidebook is being widely disseminated as a reference for EPR messages in the Rohingya refugee camps.