

30 September 2024

KEY MESSAGES:

- **Favorable weather is forecasted** to extend across Cox’s Bazar District this week, with minimal rainfall averaging below 22 mm/day and gusty wind below 40 km/hr.
- However, **intense to very intense atmospheric convection is likely** from 1 October which may result in heavy rainfall in Ukhiya and Teknaf.
- **Teknaf may experience higher accumulated precipitation estimated above 160 mm** on 2 October.

Generally, Cox's Bazar District will experience favorable weather with light to moderate rain showers below 22mm/day from 30 September to 6 October, as forecasted by the [Bangladesh Meteorological Department](#)¹. However, scattered low to medium clouds with intense to very intense atmospheric convection are imminent in the south and

northeast Bay of Bengal, off the Bangladesh coast. As a result, scattered low to moderate showers are likely, with a heavy downpour forecasted in the Teknaf and Ukhiya areas from 1 October.

With the continuous favorable weather, an accumulated five-day rainfall threshold is expected below 150 mm. However, high precipitation is estimated on 2 October at above 160 mm in Teknaf and at 100 mm in Ukhiya (Figure 1). The highest daily spatial average rainfall is expected to be 41 mm in Teknaf on 1 October and 31 mm in Cox's Bazar Sadar (Figure 2)

Figure 1: Forecasted 7 days accumulated rainfall threshold.

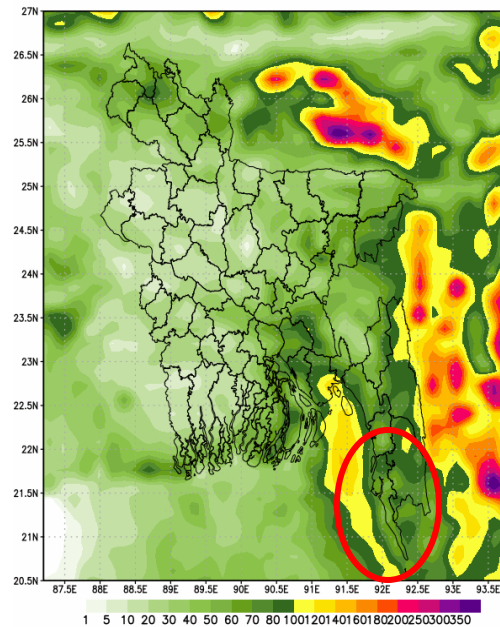
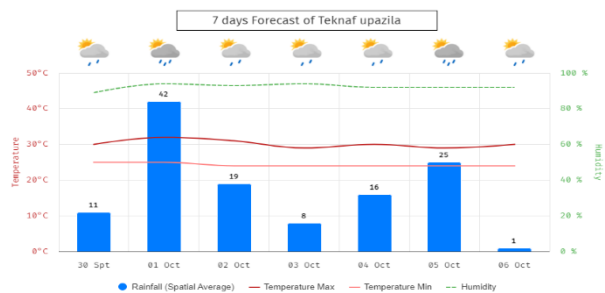
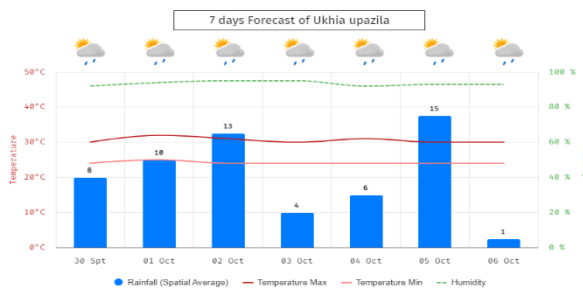
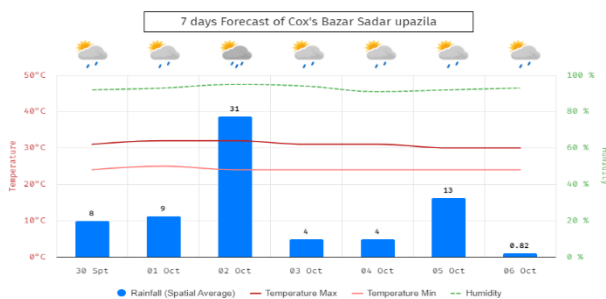


Figure 2: Seven days daily average rainfall forecast.



¹ [BMD Weather Forecast](#)

Considering the vulnerability of the Rohingya camps, the ISCG advises that Sectors, EPR WG members, and relevant agencies **carry out emergency preparedness actions, including timely dissemination of early warning messages, alerts, and advisories, especially during the onset of heavy downpours.** Importantly, the **most vulnerable should be relocated to safe places** to reduce the potential for negative consequences, significant damage, and loss of life. Actions shall be carried out closely with Sector Lead agencies and camp DMCs.

As previously advised by the ISCG, the high-risk and highly susceptible landslide locations in the Rohingya refugee camps should be prioritized for readiness and preparedness actions. In addition to preparedness in moderately susceptible locations, areas frequently affected by slope failure incidents since the monsoon period should be prioritized, such as **Camps 3, 7, 8W, 9, 10, 11, 12, 13, 16, 18, 19, 20, 20 Ext.** Other areas that need attention with slope failure incidents reported are **Camps 1W, 1E, 9, 2E, 26 and KRC** (Figure 3).

On the other hand, the low-lying areas that have been frequently flooded should also be prioritized for flood preparedness actions, such as **Camps 1W, 3, 20 and 20 Ext.** Additional areas that have experienced flooding include **Camps 4, 8W, 18, 19, 22, 26 and 27** (Figure 4).

Figure 3: Landslide Risk Map at camps

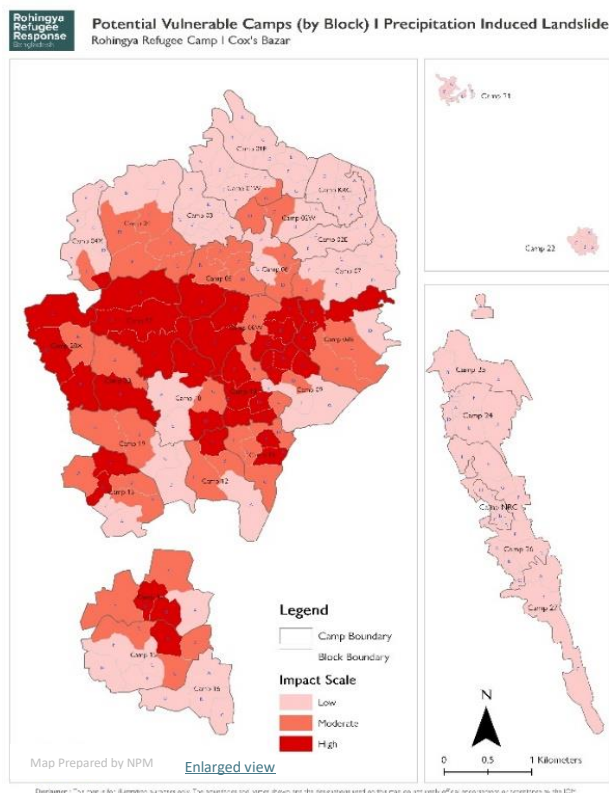
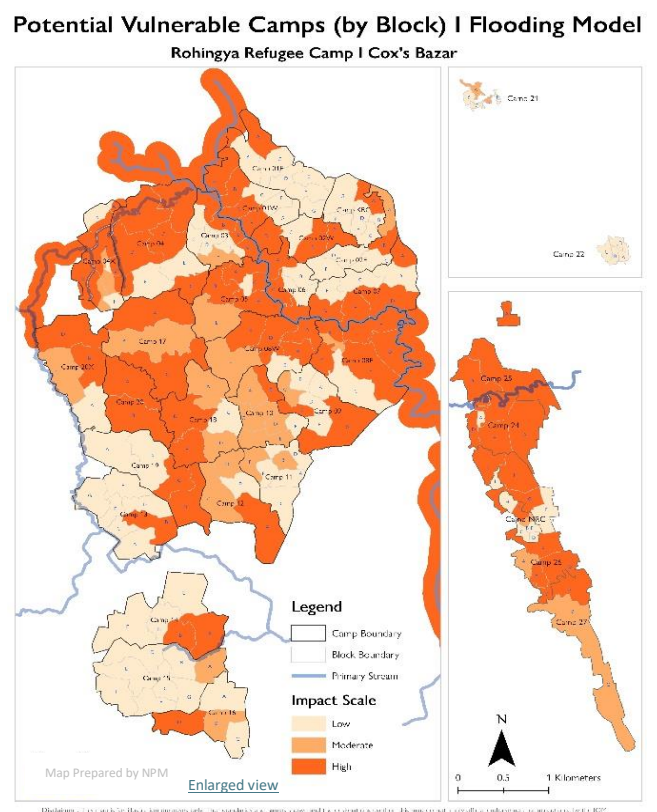


Figure 4: Flood high-risk areas



For harmonized preparedness messages, the ISCG advises consistently using the [Guidebook for Multi-Hazard Risk Communication and Community Engagement in Camp Settlement](#) approved by the RRRC. This guidebook is being widely disseminated as a reference for EPR messages in the Rohingya refugee camps.