

26 September 2024

**KEY MESSAGES:**

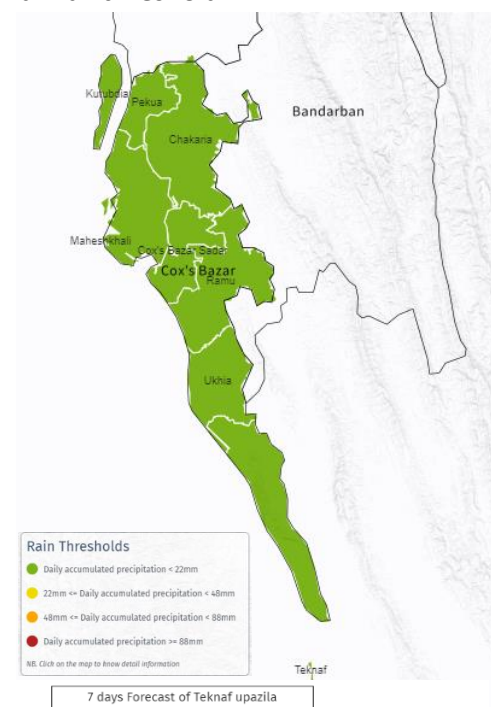
- **Sustained sunny weather** across Cox’s Bazar District, with minimum rainfall averaging below 22 mm/day and gusty wind below 40 km/hr.
- **A low-pressure area is likely to form** over the Bay of Bengal around 1 October, which may increase rainfall in Ukhiya and Teknaf.
- **Teknaf may experience higher average daily rainfall** during the onset of the fresh downpour starting from 1 October.

Favorable weather with light to moderate rain showers below 22mm/day will continue from 26 September to 30 September, as indicated in the [Bangladesh Meteorological Department's](#) weather forecast<sup>1</sup>. However, there is likelihood of a moderate to intense atmospheric convection that may form a low-pressure area on 1 October, passing quickly over the

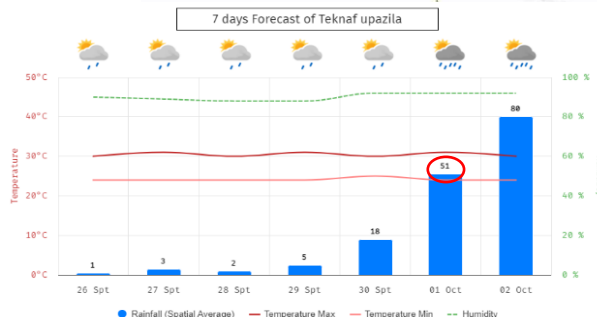
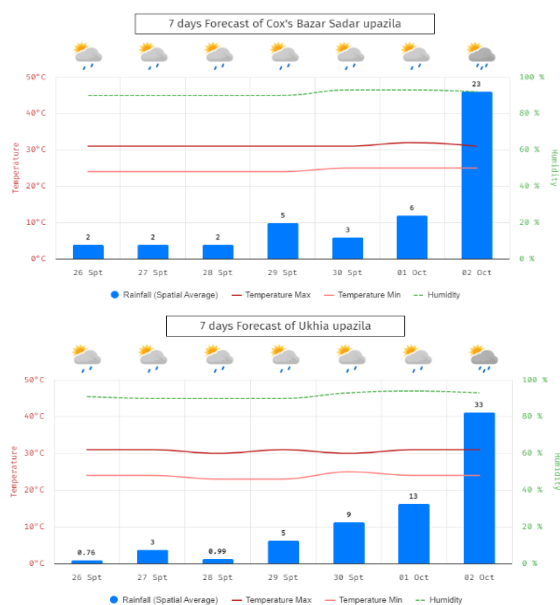
Bay of Bengal, as captured by the European Centre for Medium-Range Weather Forecasts (ECMWF). As a result, there may be scattered low to moderate showers across Cox’s Bazar, with likely heavy downpour episodes in Teknaf.

With the continuous favorable weather, an accumulated rainfall threshold is expected below 22 mm/day (Figure 1). The forecasted low-pressure area may influence the increase of daily precipitation in Teknaf to be above 22 mm/day on 1 October, and across Cox's Bazar District from 2 October (Figure 2).

**Figure 1: Forecasted 7 days accumulated rainfall threshold.**



**Figure 2: Seven days daily average rainfall forecast.**



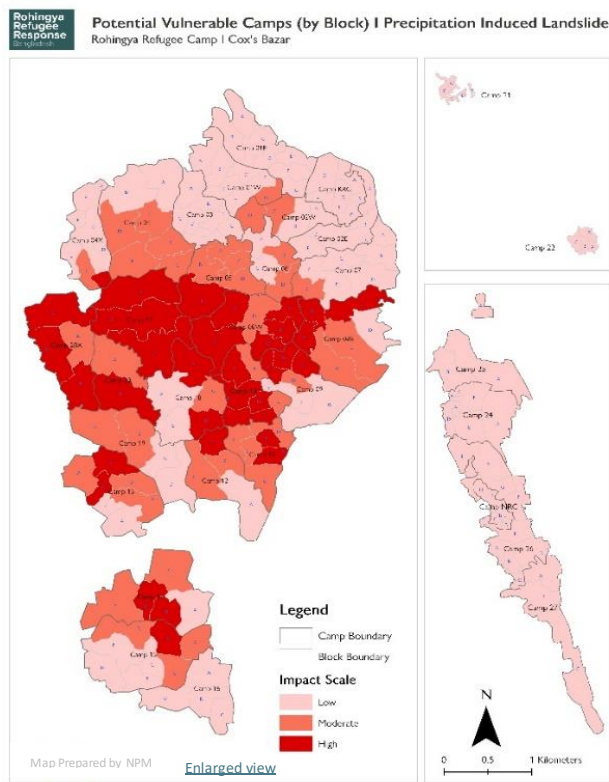
<sup>1</sup> [BMD Weather Forecast.pdf](#)

Considering the vulnerability of the Rohingya camps, the ISCG advises that Sectors, EPR WG members, and relevant agencies **carry out emergency preparedness actions, including timely dissemination of early warning messages, alerts, and advisories, especially during the onset of heavy downpours.** Importantly, the **most vulnerable should be relocated to safe places** to reduce the potential for negative consequences, significant damage, and loss of life. Actions shall be carried out closely with Sector Lead agencies and camp DMCs.

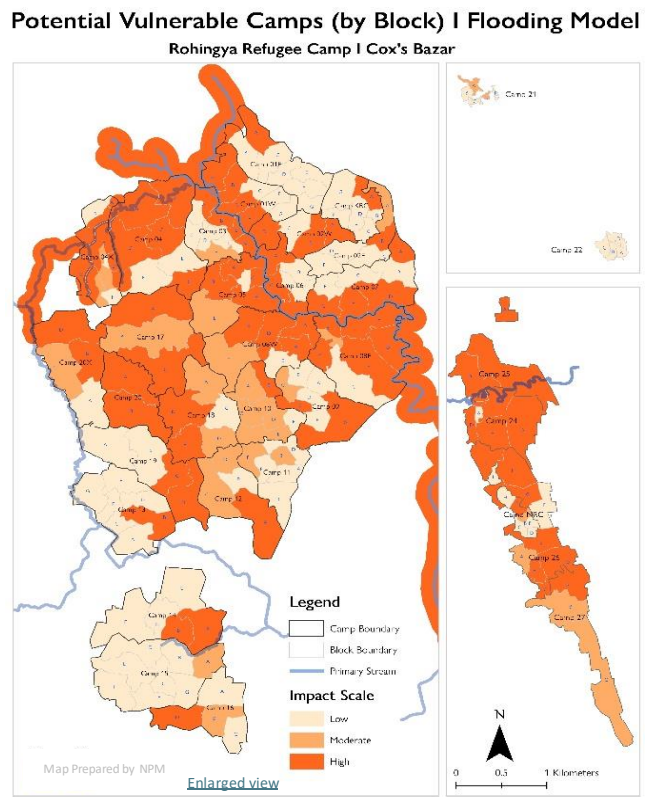
As previously advised by the ISCG, the high-risk and highly susceptible landslide locations in the Rohingya refugee camps should be prioritized for readiness and preparedness actions. In addition to preparedness in moderately susceptible locations, areas frequently affected by slope failure incidents since the monsoon period should be prioritized, such as **Camps 3, 7, 8W, 9, 11, 12, 13, 16, 18, 19, 20, 20 Ext.** Other areas that need attention with slope failure incidents reported are **Camps 1W, 1E, 9, 2E, 26 and KRC** (Figure 3).

On the other hand, the low-lying areas that have been frequently flooded should also be prioritized for flood preparedness actions, such as **Camps 1W, 3, 20 and 20 Ext.** Additional areas that have experienced flooding include **Camps 4, 8W, 18, 19, 22, 26 and 27** (Figure 4).

**Figure 3: Landslide Risk Map at camps**



**Figure 4: Flood high-risk areas**



For harmonized preparedness messages, the ISCG advises consistently using the [Guidebook for Multi-Hazard Risk Communication and Community Engagement in Camp Settlement](#) approved by the RRRC. This guidebook is being widely disseminated as a reference for EPR messages in the Rohingya refugee camps.