

22 September 2024

**KEY MESSAGES:**

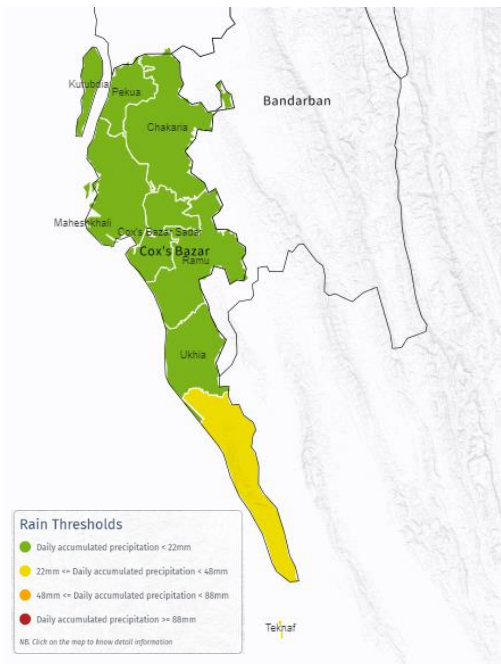
- Favorable weather was sustained across Cox’s Bazar District, with the minimum rainfall averaging below 22 mm/day and gusty wind below 60 km/hr.
- A low-pressure area is likely to form over the northwest and adjoining west-central Bay of Bengal around 23 September, which may result in increased rainfall in the Ukhiya and Teknaf areas.
- Teknaf may experience an accumulated rainfall threshold between 22 to 44 mm/day on 24 September.

The favorable weather with an average rainfall below 22mm/day will continue from 22 to 28 September. However, as forecasted, a low-pressure area will likely form on 23 September, passing quickly over the Bay of Bengal as indicated in the [Bangladesh Meteorological Department’s](#) weather forecast<sup>1</sup>. As a result, there may be scattered low to medium clouds with

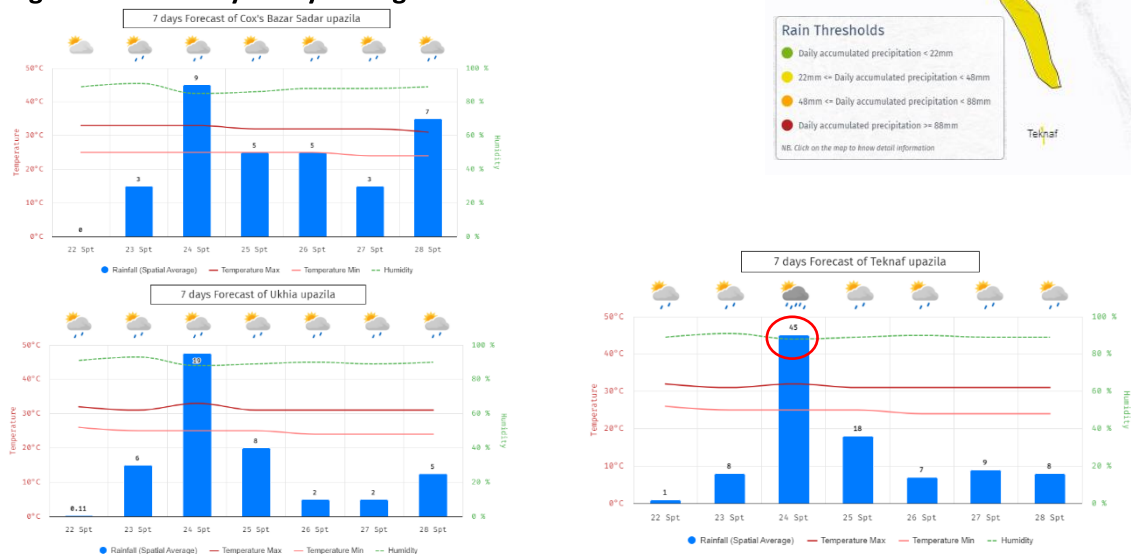
intense to very intense convection at the north Bay of Bengal, Rakhine Myanmar coast, west-central and south area of the Bay of Bengal.

With the continuous favorable weather, light and moderate showers are expected for seven days with an accumulated rainfall threshold of 22 mm/day from today to 28 September (Figure 1). The forecasted low-pressure area may influence the increase of the daily precipitation in Ukhiya and Teknaf to be above 22 mm/day, while across Cox's Bazar District, it is expected to be sunny with a below-rain average of 10 mm/day (Figure 2).

**Figure 1: Forecasted 7 days accumulated rainfall threshold.**



**Figure 2: Seven days daily average rainfall forecast.**



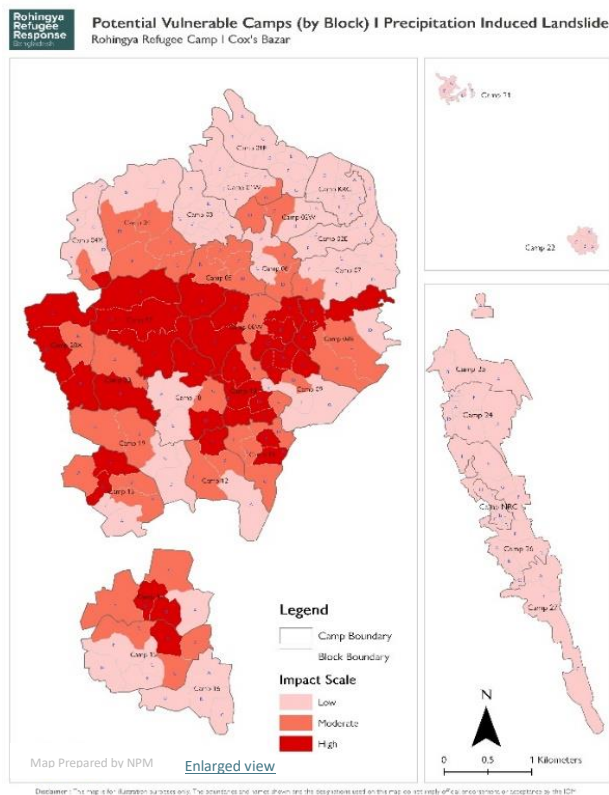
<sup>1</sup> [BMD Weather Forecast.pdf](#)

Considering the vulnerability of the Rohingya camps, the ISCG advises that Sectors, EPR WG members, and relevant agencies **carry out emergency preparedness actions**, including **timely dissemination of early warning messages, alerts, and advisories**, especially **during the onset of heavy downpours**. Importantly, the **most vulnerable should be relocated to safe places** to reduce the potential for negative consequences, significant damage, and loss of life. Actions shall be carried out closely with Sector Lead agencies and camp DMCs.

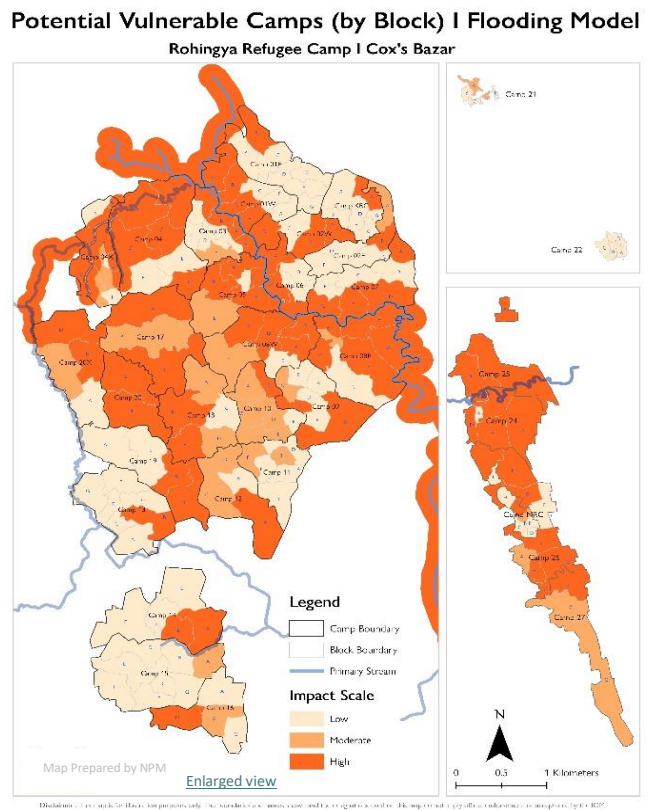
As previously advised by the ISCG, the high-risk and highly susceptible landslide locations in the Rohingya refugee camps should be prioritized for readiness and preparedness actions. In addition to preparedness in moderately susceptible locations, areas frequently affected by slope failure incidents since the monsoon period should be prioritized, such as **Camps 3, 7, 8W, 9, 11, 12, 13, 16, 18, 19, 20, 20 Ext.** Other areas that need attention with slope failure incidents reported are **Camps 1W, 1E, 9, 2E, 26 and KRC** (Figure 3).

On the other hand, the low-lying areas that have been frequently flooded should also be prioritized for flood preparedness actions, such as **Camps 1W, 3, 20 and 20 Ext.** Additional areas that have experienced flooding include **Camps 4, 8W, 18, 19, 22, 26 and 27** (Figure 4).

**Figure 3: Landslide Risk Map at camps**



**Figure 4: Flood high-risk areas**



For harmonized preparedness messages, the ISCG advises consistently using the [Guidebook for Multi-Hazard Risk Communication and Community Engagement in Camp Settlement](#) approved by the RRRC. This guidebook is being widely disseminated as a reference for EPR messages in the Rohingya refugee camps.