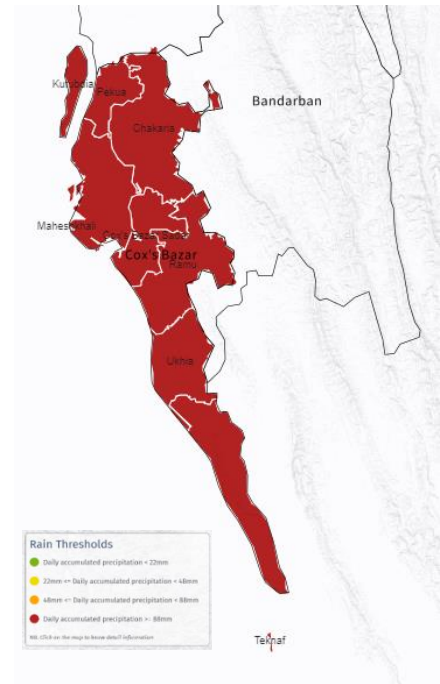


12 September 2024

**KEY MESSAGES:**

- A low-pressure area is likely to form over coastal Bangladesh and the adjoining North Bay of Bengal during the next 24 hours due to upper air cyclonic circulation over Southeast Bangladesh and the nearby region at lower and middle tropospheric levels.
- Sustained intense and heavy downpour from 12 to 14 September is expected.
- Across the Cox’s Bazar district, the accumulated rainfall will be over 500 mm/day by 14 September.
- In Teknaf, gusty winds are forecasted between 60 - 80 kph, while other parts of Cox’s Bazar district are estimated to have a lower threshold of 40 - 60 kph.

**Figure 1: Seven days daily rainfall forecast threshold.**



The [Bangladesh Meteorological Department](#) released a weather forecast mentioning the likelihood of a low-pressure area forming over the coastal regions of Bangladesh and adjoining North Bay in the next 24 hours<sup>1</sup>. Thereafter, it will likely move slowly west-northwestwards and concentrate into a depression over coastal West Bengal and adjoining Northwest Bay of Bengal during the subsequent 48 hours. With this, a heavy rainfall warning has been released<sup>2</sup>, anticipating the potential for landslides and flooding.

Consequently, a flash flood alert has also been released, informing the likely scenario of accumulated high rains of over 500 mm within 72 hours from 13 September to 14 September (*Figures 1 and 2*). Meanwhile, Cox’s Bazar Sadar and other parts of the district will have gusty wind from 40 kph to 60 kph, while Teknaf is expected to experience wind speeds between 60 kph to 80 kph.

**Figure 2: Accumulated rains, alerting flash floods.**

Accumulated Rainfall of Cox's Bazar Sadar (mm)				Accumulated Rainfall of Ukhia (mm)			
Duration	2024-09-12	2024-09-13	2024-09-14	Duration	2024-09-12	2024-09-13	2024-09-14
24 Hours	287.87		151.41	24 Hours	242.11		181.91
48 Hours	242.96	499.68	439.28	48 Hours	184.90	368.26	424.02
72 Hours	279.55	530.83	651.09	72 Hours	232.69	427.01	550.17

Accumulated Rainfall of Teknaf (mm)			
Duration	2024-09-12	2024-09-13	2024-09-14
24 Hours	282.59		181.91
48 Hours	228.79	427.36	464.50
72 Hours	286.39	511.38	609.27

<sup>1</sup> [BMD Weather Forecast.pdf](#)

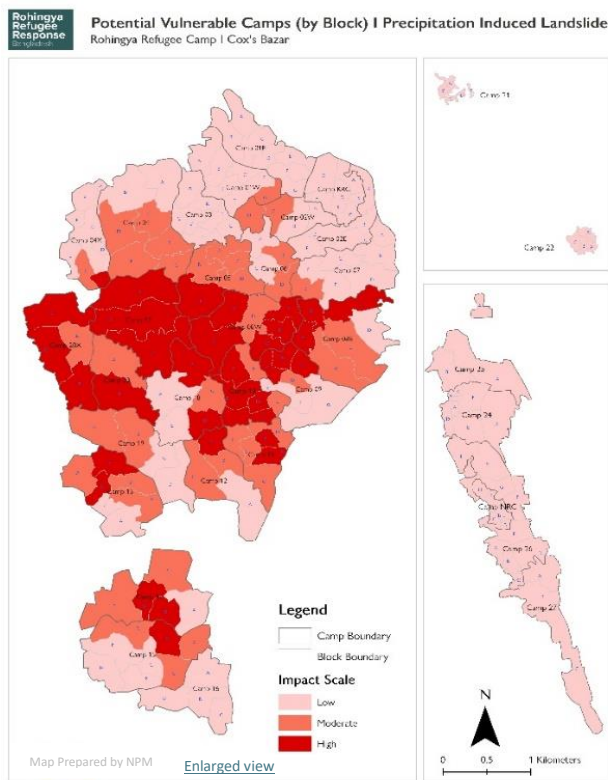
<sup>2</sup> [BM Heavy Rainfall Warning.pdf](#)

Considering the vulnerability to adverse weather of the Rohingya camps, the ISCG advises that Sectors, EPR WG members, and relevant agencies **carry out emergency preparedness actions, including timely dissemination of early warning messages, alerts, and advisories.** Importantly, **the most vulnerable people should be relocated to safe places** to reduce the potential for negative consequences, significant damage, and loss of life. Actions shall be carried out closely with Sector Lead agencies and camp DMCs.

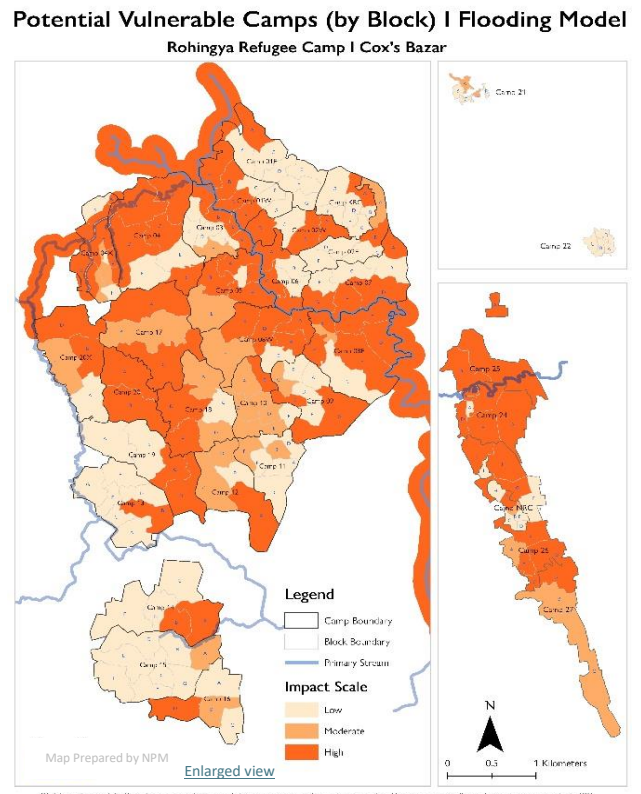
As previously advised by the ISCG, the high-risk and highly susceptible landslide locations in the Rohingya refugee camps should be prioritized for readiness and preparedness actions. In addition to preparedness in moderately susceptible locations, areas frequently affected by slope failure incidents since the monsoon period should be prioritized, such as **Camps 3, 7, 8W, 9, 11, 12, 13, 16, 18, 19, 20 and 20 ext.** Other areas that need attention with slope failure incidents reported are **Camps 1W, 1E, 9, 2E, 26 and KRC** (Figure 3).

On the other hand, the low-lying areas that have been frequently flooded should also be prioritized for flood preparedness actions, such as **Camps 1W, 3, 20 and 20 ext.** Additional areas that have experienced flooding are **Camps 4, 8W, 18, 19, 22, 26 and 27** (Figure 4).

**Figure 3: Landslide Risk Map at camps**



**Figure 4: Flood high-risk areas**



For harmonized preparedness messaging, the ISCG advises consistently utilizing the [Guidebook for Multi-Hazard Risk Communication and Community Engagement in Camp Settlement](#) approved by the RRRC. This guidebook is being widely disseminated as a reference for EPR messages in the Rohingya refugee camps.