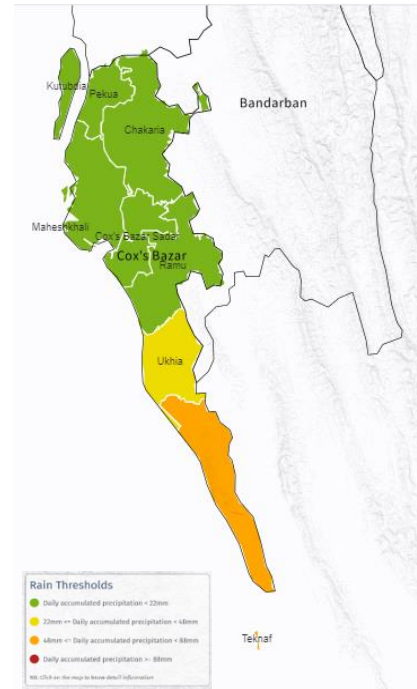


08 September 2024

KEY MESSAGES:

- A well-marked low pressure will likely intensify into a depression over the northwest Bay of Bengal, resulting in isolated rain in Cox’s Bazar Sadar. However, overall weather will be favorable, with cumulative rain below the 22 mm/day threshold from 08 September to 10 September 2024.
- Imminent of fresh heavy downpour episode from 11 September 2024.
- The Teknaf area will receive higher precipitation than other parts of the district.
- Gusty wind is forecasted between 40 to 60 kph in Cox’s Bazar coastal belt.

Figure 1: Seven days daily rainfall forecast threshold.

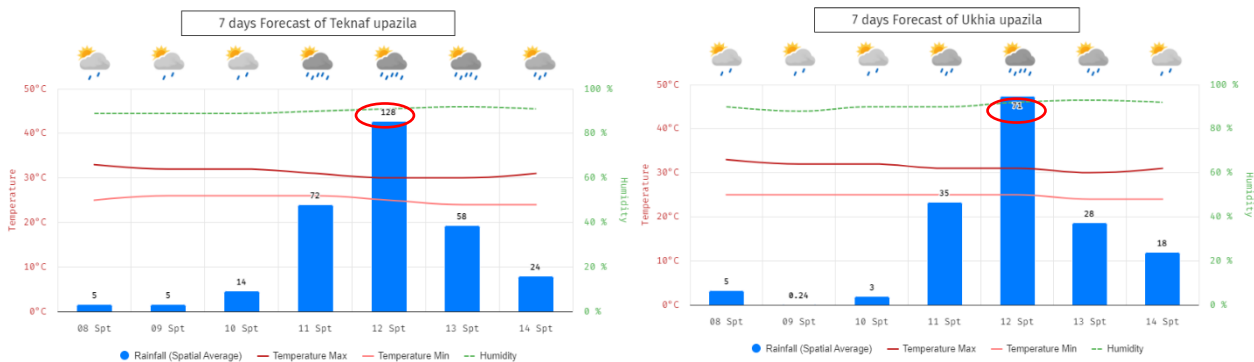


On 08 September 2024, the [Bangladesh Meteorological Department](#) released a new special weather bulletin advising to keep hoisting local signal number 3 due to squally weather caused by an intensified well-marked low-pressure area into a depression over Westcentral Bay and adjoining Northwest Bay of Bengal, approximately 670 kilometers west-southwest of Cox’s Bazar port¹. However, the overall forecasted weather remains favorable from 08 September to 10 September, with still light (1-10 mm/day) and moderate rain (11-22 mm/day)².

Heavy downpours are expected from 11 September, with an estimated cumulative rainfall threshold in Teknaf areas from 44 mm/day to 88 mm/day, which will intensify to over 88 mm/day on 12 September. Meanwhile, Cox’s Bazar Sadar and other parts of the district will have lesser rains, expected to be below the 48 mm/day threshold, but they may be higher in the Ukhia areas, estimated at not less than 70 mm/day (Figure 1).

Consequently, the [BMD INSTANT Portal estimated the](#) daily rainfall spatial average below 10mm/day, confirming favorable weather from 08 September to 10 September. Sustained rainfall thereafter from 11 September onwards, with estimated highest estimated at 128 mm/day in Teknaf and 71 mm/day in Ukhia (Figure 2).

Figure 2: Daily rainfall average forecast.



¹ [Special Weather Bulletin.pdf](#)

² [BMD Weather Forecast.pdf](#)

Considering the vulnerabilities of the Rohingya camps, the ISCG is advising that Sectors, EPR WG members, and relevant agencies **carry out emergency preparedness actions all the time, including timely dissemination of early warning messages, alerts, and advisories**, in order to reduce the potential for negative consequences, significant damage, and loss of life. Actions shall be carried out closely with Sector Lead agencies and camp DMCs.

As previously advised by the ISCG, the high-risk and high-susceptible landslide locations in the Rohingya Refugee Camps should be prioritized for readiness and preparedness actions. In addition to preparedness in moderately susceptible locations, areas frequently affected by slope failure incidents since the monsoon period should be prioritized, such as **Camps 03, 07, 08W, 09, 11, 12,13,16,18,19,20,20ext**. Other areas that need attention with slope failure incidents reported are camps **01W, 1E, 9, 2E, 26, and KRC** (Figure 3).

On the other hand, the low-lying areas that have been frequently flooded should also be prioritized for flood preparedness actions, such as **Camps 01W, 03, 20, and 20 ext**. Other areas that were also flooded were **Camps, 04, 08W, 18,19, 22, 26 & 27** (Figure 4).

Figure 3: Landslide Risk Map at camps

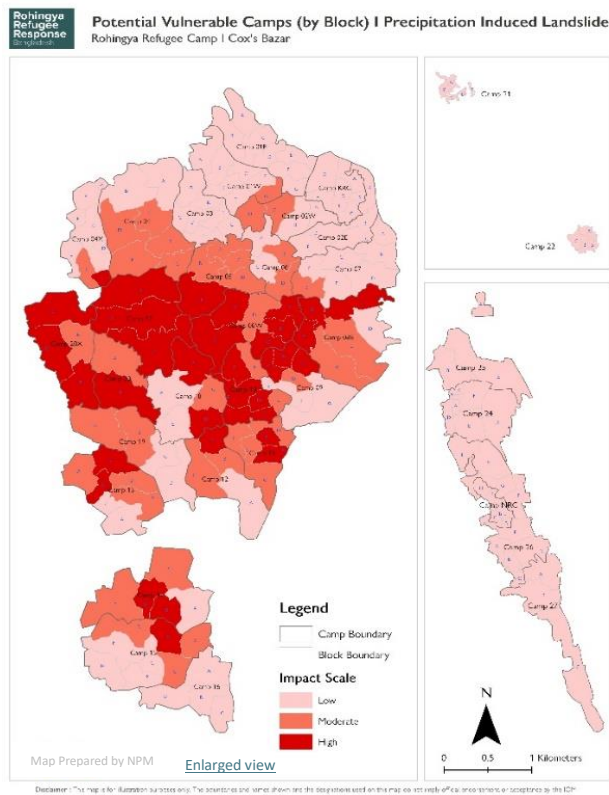
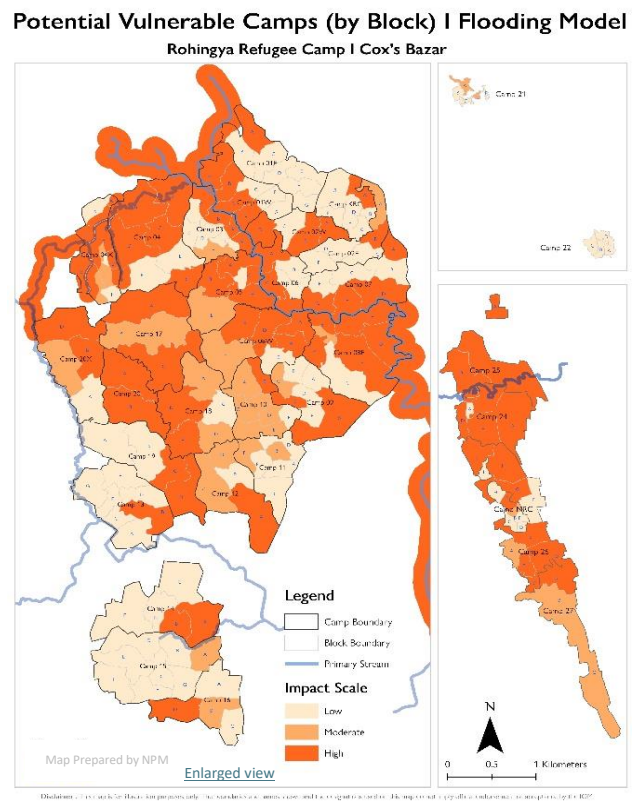


Figure 4: Flood high-risk areas



For harmonized preparedness messages, the ISCG advises consistently using the [Guidebook for Multi-Hazard Risk Communication and Community Engagement in Camp Settlement](#) approved by the RRRC. This guidebook is being widely disseminated as a reference for EPR messages in the Rohingya Refugee Camps. Below are the excerpts on landslide and flood preparedness and response messaging for dissemination.