

5 September 2024

KEY MESSAGES:

- A cyclonic circulation lies over Coastal Andhra Pradesh and the adjoining west-central Bay of Bengal in middle tropospheric levels. Under its influence, a **low-pressure area (LPA) has formed** over Westcentral Bay and adjoining Northwest Bay.
- Monsoon is active across Bangladesh and moderate over North Bay.
- Fresh heavy downpour episode is forecasted to start on 10 September

Despite the formation of the low-pressure area in the westcentral Bay and adjoining North Bay, the [Bangladesh Meteorological Department](#) forecasted favorable sunny weather across Cox’s Bazar district from 05 September to 09 September 2024¹. However, given the looming low-pressure area, there is a likelihood of sporadic heavy rainfall in isolated areas.

Overall, light (1-10 mm/day) to moderate (11-22 mm/day) rains are expected.

Consequently, the estimated cumulative rainfall is below the 22 mm/day threshold (green), with projected isolated rains not over 10 mm in Cox’s Bazar Sadar on 6 September and 7 September 2024 (Figure 1). Also, the gusty wind is expected to be below 40 kph from 05 to 09 September 2024, with the likelihood of increasing during the onset of a new downpour period on 10 September 2024.

Likewise, the [BMD INSTANT Portal](#) reflected daily rainfall spatial average way below 10mm/day, confirming favorable weather for the next five days, from 05 September to 09 September. Meanwhile, a new episode of heavy down is expected from 10 September onwards (Figure 2).

Figure 1: Seven days daily rainfall forecast threshold.

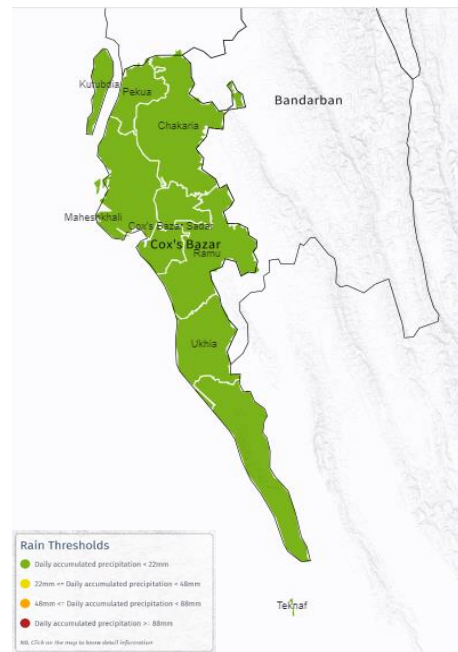
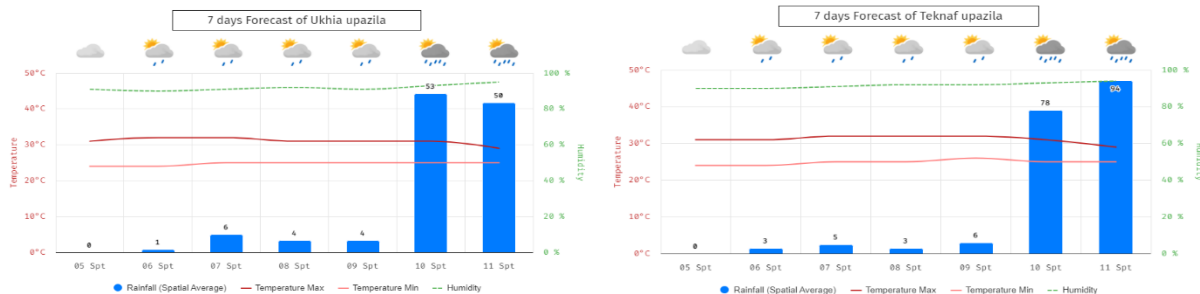


Figure 2: Daily rainfall average forecast.



¹ [BMD Weather Forecast.pdf](#)

Considering the vulnerabilities of the Rohingya camps, the ISCG is advising that Sectors, EPR WG members, and relevant agencies carry out emergency preparedness actions all the time, including timely dissemination of early warning messages, alerts, and advisories, in order to reduce the potential for negative consequences, significant damage, and loss of life. Actions shall be carried out closely with Sector Lead agencies and camp DMCs.

As previously advised by the ISCG, the high-risk and high-susceptible landslide locations in the Rohingya Refugee Camps should be prioritized for readiness and preparedness actions. In addition to preparedness in moderately susceptible locations, areas frequently affected by slope failure incidents since the monsoon period should be prioritized, such as Camps 03, 07, 08W, 09, 11, 12, 13, 16, 18, 19, 20, 20ext. Other areas that need attention with slope failure incidents reported are camps 01W, 1E, 9, 2E, 26, and KRC (Figure 3).

On the other hand, the low-lying areas that have been frequently flooded should also be prioritized for flood preparedness actions, such as Camps 01W, 03, 20, and 20 ext. Other areas that were also flooded were Camps, 04, 08W, 18, 19, 22, 26 & 27 (Figure 4).

Figure 3: Landslide Risk Map at camps

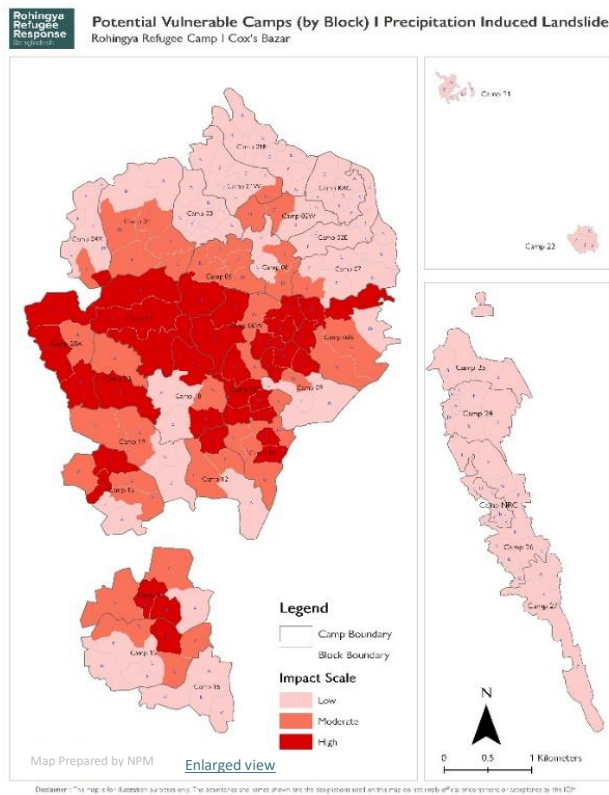
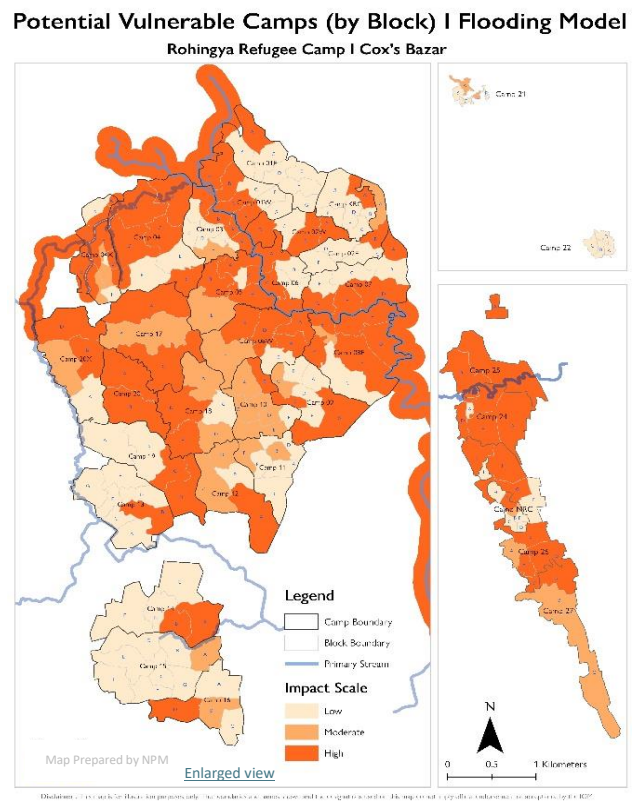


Figure 4: Flood high-risk areas



For harmonized preparedness messages, the ISCG advises consistently using the [Guidebook for Multi-Hazard Risk Communication and Community Engagement in Camp Settlement](#) approved by the RRRC. This guidebook is being widely disseminated as a reference for EPR messages in the Rohingya Refugee Camps. Below are the excerpts on landslide and flood preparedness and response messaging for dissemination.