



BULLETIN

NUTRITION SECTOR COX'S BAZAR, BANGLADESH

QUARTER 01

MARCH, 2024

ISSUE: 05

CONTENTS

#PAGE

Programme Update	1
Funding Update 2024	1
PIN, Target and Reached	1
Sector Highlights	1
Partners' Capacity Assessment	3
Success Story	
• GK	4
• SHED	4
• Concern	5

SECTOR HIGHLIGHTS

- The 2024 Joint Response Plan (JRP) has been published, requesting USD 44.6 million for Nutrition - targeting a total of 392,791 people in the camps and host communities of Cox's Bazar.
- The Nutrition Sector (NS), with the support of the Global Nutrition Cluster (GNC), conducted a comprehensive Partners' Capacity Assessment on 26-29 February 2024 assessing the organisation's areas of greatest strength as well as the areas where it may require development or improvement.
- All the nutrition appealing and implementing partners participated on the 13th of March SA & EAP Regional Nutrition Coordination Consultation Meeting for the purpose of sharing knowledge and experiences. During the meeting, Cox's Bazar Nutrition Sector made a presentation on GBV Safety Audit Assessment, which also addressed the queries from other participants.
- The Nutrition Sector has reviewed the programme implementation of the JRP 2023. All the indicators have been successfully met, reaching the targets. The key contributing factors to this achievement include consistent growth monitoring and promotion, early detection of malnutrition, and effectiveness of the Vitamin A supplementation/deworming and malnutrition screening campaign and the blanket supplementary feeding programme.

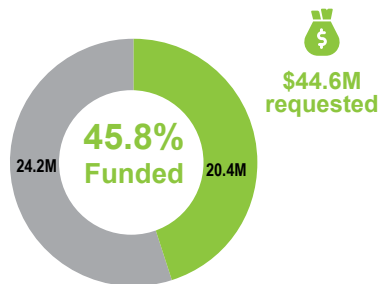
NUTRITION PROGRAMME UPDATE

	2024 TARGET	PROGRESS (Jan-Mar)
SAM	12,200	2,539 (21% of target) Cure rate 90.68%
MAM	U5- 59,400 PLW- 3,500	U5- 10,590 (18% of target) Cure rate 98.45% PLW- 769 (22% of target)
IYCF	86,100	53,788 (62% of target)
BSFP	U5- 144,600 PLW- 40,300	U5- 138,881* (96% of target) PLW- 39,925 (99% of target)
IFA	PLW- 33,600 Adolescent- 99,000	PLW- 5,697 (17% of target) Adolescent- 55,252 (56% of target)
GMP	154,400	156,843 (102% of target)

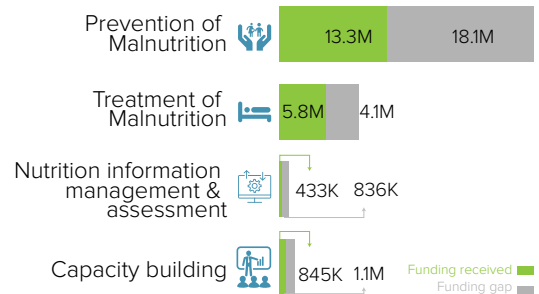
*This figure includes 82,787 beneficiaries of NSEP

FUNDING UPDATE AS OF APRIL 2024

Overall Funding Status



Funding Status by Activity



Note: Prevention and treatment of malnutrition is the most critical priority needs where USD 22.2M are still needed.

2024 JRP PIN, TARGET AND REACHED (JAN- MAR)

	Children 0-59m	Adolescent girls 10-19 yrs	Pregnant women
468K People in need			
326K Refugee	171,567	110,027	44,746
142K Host Community	71,126	53,368	17,055
393K People targeted			
294K Refugee	154,411	99,024	40,272
99K Host Community	49,788	37,358	11,938
319K People reached			
252K Refugee	156,843	55,252	39,925
67K Host Community	66,293	-	306

NS PARTNERS' CAPACITY ASSESSMENT

The Nutrition Sector (NS), with the support of the Global Nutrition Cluster (GNC), conducted a comprehensive Partners' Capacity Assessment on 26-29 February 2024. The objectives of the assessment are:

- to reflect on the organisation's areas of greatest strength as well as the areas where it may require development or improvement, and
- identify the priority areas that the organisation can work on to further improve operational effectiveness.



The individual capacity assessment tool has facilitated a comprehensive review of the six partner organisations across various dimensions. The emphasis is given in three different aspects:

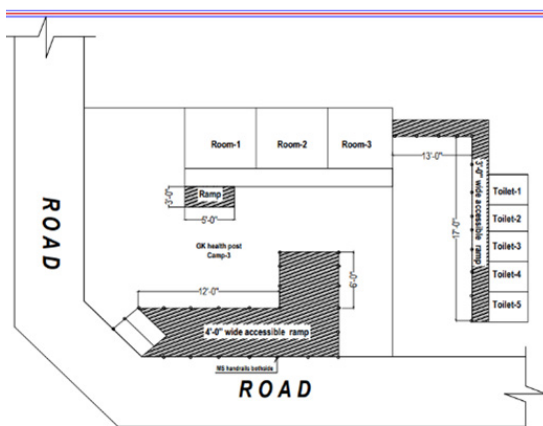
- 1) organisational capacity,
- 2) nutrition in emergencies (NiE), and
- 3) coordination and information management.

Action Against Hunger (ACF) is advised to update policies, enhance staff training, and strengthen fundraising strategies while striving for gender balance and aligning interventions with the updated guidelines in Cox's Bazar. Concern Worldwide is commended for its strong local network but urged to enhance global networking and adopt the WHO guidelines, particularly in CMAM leadership and reporting. Society for Health Extension Development (SHED) is praised for its commitment to diversity and inclusion but urged to update gender policies and scale up the SBCC strategies while reinforcing leadership and resource mobilisation efforts. Gonoshasthaya Kendra (GK) shows promises in prioritising strategic planning and gender equity, with a focus on emergency preparedness and response protocols. World Vision International (WVI) acknowledges the need to enhance networking, collaboration and gender equity while committing to improving nutrition initiatives and advocacy efforts in Cox's Bazar. Save the Children demonstrates strong organisational capacity at the national level, but requires improvements in Cox's Bazar, particularly in emphasising nutrition and conducting focused evaluations. Overall, the assessments provide valuable insights for organisational growth and optimisation across the spectrum of organisational capacity, nutrition in emergencies, and coordination and information management, thus fostering a collaborative approach to addressing humanitarian challenges effectively.

ENABLING ACCESSIBILITY FOR PERSONS WITH DISABILITIES (PWDs)

Camp 3 Site 1 was one of the Integrated Nutrition Facilities (INFs) of Camp 3, taken over by Gonoshasthaya Kendra (GK) in the middle of the year 2023. After taking over from the outgoing partner, GK envisioned making the centre friendly for persons with disabilities (PwDs). Therefore, with the collaboration of Handicap International (HI), GK assessed the nutrition facility and identified the reasonable accommodations to be made in terms of ensuring accessibility for persons with disabilities. Improving accessibility for PwDs would result in better health and nutrition outcome of the persons concerned along with better social integration and inclusiveness of comprehensive nutrition services.

After the assessment, the infrastructure was designed by including ramps, foot braille and handrails with pathways to different service points of the facility as well as accessible toilets. The installation as per the new layout was initiated on 2 March 2024, and was completed by 9 March 2024. It was a great effort from HI, through which GK's vision of creating an inclusive nutrition centre became a reality. The centre stood as a shining example of what could be achieved when compassion, determination and inclusivity came together with collaboration.



SUCCESS STORY OF JISNA

Jisna, aged 11 months, a MAM child without medical complications, was referred by a community volunteer on 28 November 2023 to the Integrated Nutrition Facility of Camp 2W, implemented by Gonoshasthaya Kendra (GK) and supported by UNCHR and WFP. Her parents lived in the Rohingya Camp 2W. During anthropometric measurement, the measurer found WHZ as $<-2SD$, MUAC as 11.7 cm, and no oedema. Based on the results, the child was admitted to the TSFP. After collecting medical history from the caregiver and conducting a physical examination, the nurse gave instructions to the caregiver on how to feed RUSF to the child at home. She also referred the child to the IYCF corner, where the caregiver received IYCF counselling on childcare, complementary feeding, and continued breastfeeding.

The nurse closely monitored the child's situation, and the beneficiary showed an improvement in nutritional status during her service-receiving period. The beneficiary's treatment was successful, and she was discharged on 7 February 2024. At the time of discharge, Jisna's weight was 7.1 kg, with a height of 67.2 cm, and an MUAC of 12.7 cm. The WHZ was greater than $-1 SD$, and there were no signs of oedema or medical complications. The average weight gain was 3.16 gm/kg/day, and the total length of stay was 71 days. The caregiver of Jisna was grateful for the support, provided by GK Nutrition Centre, and expressed her willingness to share her experiences with the wider Rohingya/FDMN community.



The child after recovery. Photo: GK/2023

NOOR SABA ACHIEVED SUCCESS IN RE-LACTATION

Ismot Ara lived with her parents in the Rohingya Camp 11. She was born on 2 November 2023. However, her mother's physical condition was not so well throughout the pregnancy period due to her severely anaemic condition. Consequently, even after numerous efforts, her mother passed away on 17 November 2023, just 15 days after the birth of Ismot Ara, and she became motherless. In this situation the family faced huge challenges with the newborn baby, which worsened when Ismot Ara's father was blaming the newborn child for her mother's untimely demise. Amidst this chaos, a ray of hope and compassion emerged. Ismat Ara's maternal aunt (Noor Saba) was residing in another block of the same camp with her own family, consisting of seven members. She decided to take full responsibility of the infant. Soon after, Ismot Ara became severely ill. It was found that her aunt initially fed Ismat Ara a mixture of rice powder and water, alongside formula milk, leading to the child falling severely ill.



Ismot Ara with her Aunt Noor during admission. Photo: SHED/2024



Ismot Ara during her follow-up visit. Photo: SHED/2024

Upon arrival at the INF, it was observed that the aunt did that due to unavailability of breastmilk, as she breastfed her last child one year ago. The IYCF

counsellor concluded that she could be a foster mother although she had discontinued breastfeeding almost a year ago. Then the counsellor started supporting her to initiate breastfeeding to Ismot Ara and counselled her on positioning and attachment. She was very determined, and her determination finally paid off on the third day when Ismot Ara started receiving breastmilk slowly.

Ismot Ara was currently gaining weight steadily albeit slowly due to her extremely low birth weight. She last visited the nutrition facility on 11 March 2024 at four months of age with a weight of 3.4 kg. She was clinically in a good condition. Her aunt expressed gratitude towards SHED for implementing the programme.

NUTRITION INTEGRATION: AN UNVEILING MIRACLE OF TRANSFORMATION

Mina was a 10-month-old baby, living with her mother in Nayapara registered camp. The block majhi (community leader) noticed her deteriorating health and referred her to Concern Worldwide community nutrition workers. After an assessment, the child was diagnosed with severe acute malnutrition, and was enrolled in the Outpatient Therapeutic Programme (OTP) at the Integrated Nutrition Facility (INF), supported by Concern Worldwide, on 17 July 2023. On admission, her mid-upper arm circumference (MUAC) was 82 mm, weight 4.7 kg, and height 61.1 cm (Z score: <-2SD). The child received IYCF counselling support and completed EPI vaccination (BCG, MR), Vit-A supplementations, and amoxicillin. With this, the volunteers paid frequent follow-ups to track her health and nutrition condition, guiding to do necessary matters accordingly. Despite initial progress, illness (fever, diarrhoea, and cough) led to slow improvement of MUAC and weight, prompting her to visit inpatient care at the Stabilisation Centre.



Before treatment. Photo: Concern/2024



After treatment. Photo: Concern/2024

Following discharge from the Stabilisation Centre after suffering a period of illness and upon recovery, the beneficiary resumed OTP services. A home visit confirmed proper feeding, clean environment, and improved child condition.

The baby transitioned from OTP to TSFP successfully, bringing joy to her mother, Monira. Now eligible for BSFP, the child was receiving continued support under this component.

Monira expressed her happiness with a big smile, *“Thanks to the incredible support from Concern Worldwide, my child has recovered, and she thrives again. I’m grateful beyond words for their unwavering care and dedication.”*

Abbreviation

BSFP	Blanket Supplementary Feeding Program
EAP	East Asia and Pacific
EPI	Expanded Program on Immunization
FDMN	Forcibly Displaced Myanmar Nationals'
GMP	Growth Monitoring and Promotion
IFA	Iron and Folic Acid
INF	Integrated Nutrition Facility
IYCF	Infant and Young Child Feeding
JRP	Joint Response Plan
MAM	Moderate Acute Malnutrition
MUAC	Mid-Upper Arm Circumference
NSEP	Nutrition Sensitive E-Voucher Programme
PLW	Pregnant and Lactating Women
RUSF	Ready-to-use Supplementary Food
SA	South Asia
SAM	Severe Acute Malnutrition
SBCC	Social and Behaviour Change Communication
SD	Standard Deviation
TSFP	Targeted Supplementary Feeding Program
U5	Children Under 5 years
Vit-A	Vitamin A
WHO	World Health Organization
WHZ	Weight for Height Z-score

Nutrition Sector Contacts

Sector Coordinator

Kibrom Tesfaselassie

✉ ktesfaselassie@unicef.org

☎ +880 1701 208902

Information Management Officer

Mohd Mostakim Ali

✉ mmoali@unicef.org

☎ +880 1824 016708

UNV Nutrition Officer

Nafisa Habib Purba

✉ npurba@unicef.org

☎ +880 1880 376658

About Nutrition Sector (NS)

The Nutrition Sector was established in 2017 during the Rohingya refugee influx in Cox's Bazar, with the goal to provide coordinated nutrition interventions. To ensure effective delivery of nutrition services, the Sector collaborates with 09 partners, including the Government of Bangladesh in 2024. This collaboration allows the Sector to operate at the forefront of nutritional interventions. The Sector has a Strategic Advisory Group that advocates for strategic priorities and supports contingency plans. Currently, the Sector comprises three technical working groups, namely, the Infant and Young Child in Emergency Working Group, the Community Management of Acute Malnutrition Working Group, the Assessment, and Information Management Working Group. These working groups guarantee compliance with national and international standards.

This quarterly bulletin for the Nutrition Sector in Cox's Bazar in 2024 showcases the sector's achievements, updates, and emergency responses etc. The bulletin highlights the sector's success in strengthening humanitarian nutrition coordination, which has led to a predictable and accountable response. In addition, it captures the high-level brainstorming workshop that was held to enhance the sector's capabilities to address potential nutrition issues. Additionally, the bulletin features survey findings and success stories that illustrate the sector's outstanding work. The sector's commitment to cutting-edge humanitarian responses is evident in this bulletin, which doubles as a testament to its unwavering dedication. Consequently, the Sector has been able to provide effective nutritional interventions to those in need.