

28 May 2024

Background

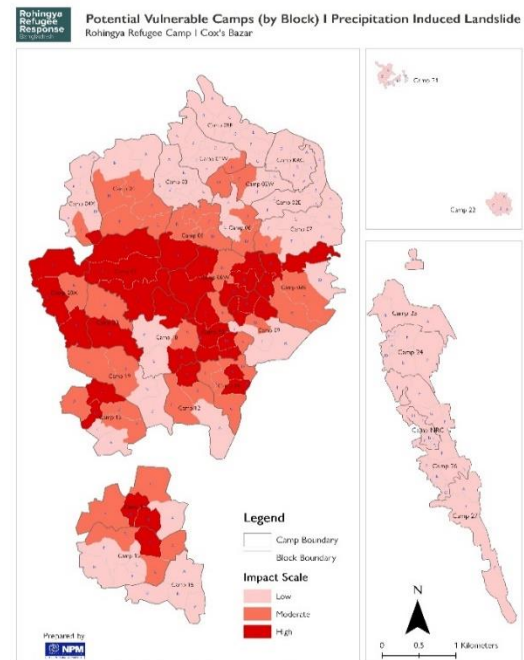
On 26 May 2024, around 8:30 PM BST, the cyclone 'REMAL' began making landfall in the Sagar Island area of West Bengal. The storm continued moving northeastward and weakened into a land-based depression, bringing gradual precipitation. On 27 May 2024, at 5:30 PM BST¹, the BMD had issued a warning due to the influence of deep depression about the potential for heavy rainfall (44-88mm/24hrs) to very heavy rainfall (≥ 89 mm/24hrs) with a risk of landslides in the hilly regions of the Chattogram division, including the Cox's Bazar district, until 5:30 PM on 28 May 2024.

On 27 May 2024, at 12:30 PM BST, the BMD/RIMES INSTANT portal² published a rainfall-induced landslide alert for the Cox's Bazar region. The alert indicated a maximum level of risk over the next 3 days, with the Ukhiya and Teknaf areas showing the highest levels of rainfall forecast, exceeding 88mm, and a high risk of landslides. According to the [BMD's Landslide Warning portal](#), Cox's Bazar is expected to accumulate more than **345mm** of rainfall over the next 5 days due to the impact of the severe cyclonic storm with the likelihood of high landslide risks³

Risk Analysis of camp and host community context

The Need and Population Monitoring (NPM) analysis, which utilizes the NASA 2019 landslide risk model with the highest accuracy for the Rohingya camps, has identified specific block-level landslide risk maps. The Kutupalong mega camps are showing a high susceptibility to landslide risks in the following areas: Camp 4x (H), Camp 5 (E), Camp 8E (A, B, E), Camp 8W (E, F), Camp 9 (A, B, C), Camp 10 (A,C, D, E), Camp 11 (A, B), Camp 12 (D), Camp 13 (E, F), Camp 14 (B,D), Camp 15 (B), Camp 18 (A, D), Camp 20 (B), Camp 20X (A, C, D).

In addition, the analysis has identified moderately susceptible landslide-risk areas across all the camps. However, the remaining areas within the camps are classified as having a low susceptibility to landslide risks, according to the NPM map.



For the host community, the in-depth scientific analysis of BMD's warning by FAO has identified several highly vulnerable areas in Cox's Bazar, Ramu, Ukhiya, and Teknaf.

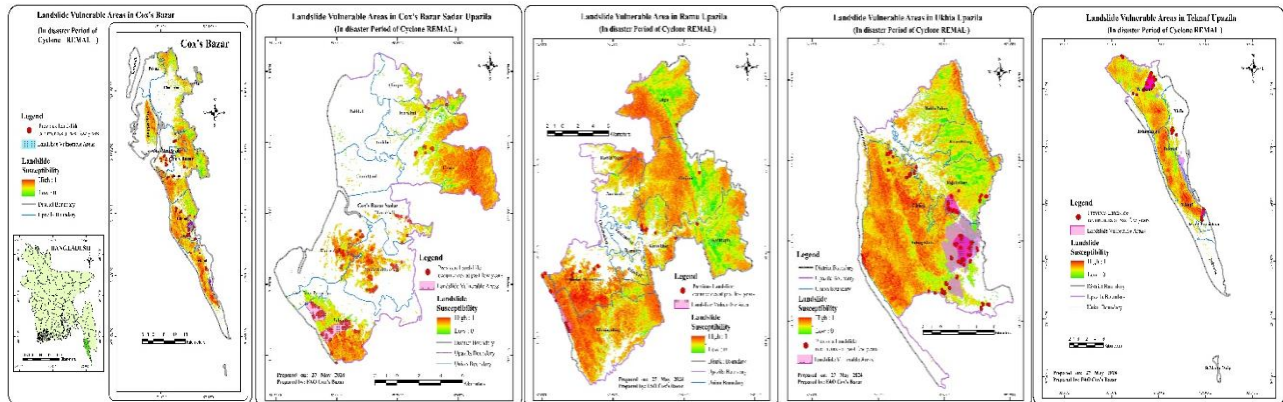
1. In Cox's Bazar Sadar, the following areas are highly susceptible to landslides: Abdul Huq Ghona, Islampur, Halima Para, Light House Para, Boiddaghona, Ghona Para from Wards 7 and 9, Siddik Hajir Ghona, Badsha Ghona, Chondrima Math, Jhirjhiri Para, Purbo Lar Para, Dhokkin Dik Kul, Ghona Para, Dokkhin Haji Para, Footkhali, and Goyam Toli Para from Ward 1, 2, and 3 of Jhilongja.
2. In Ramu, the Amtolichara and Marine drive areas from Himchari are highly susceptible to landslides.

¹ [BMD's HEAVY RAINFALL WARNING 27.05.2024.pdf](#)

² [BMD/RIMES INSTANT PORTAL SPECIAL BULLETIN BANGLADESH SEVERE WEATHER SITUATION UPDATE](#)

³ [For more technical details with pre-landslide triggers threshold, please visit Multi-Hazard Response Plan \(MHRP\)](#)

3. In Ukhiya, the landslide-susceptible areas include Foliyapara and Rajapalong Union of the host community.
4. In Teknaf, the landslide-prone areas include Tulatoli Monir Ghona, Horikhola, Andari Chora, Dakaitta Ghona, Joarikhola Hindu Para, Lamba Ghona, Raturikhola Chakma Para, and Doinga Kata from Whykong Union, Naitongpara and Puran Pollanpara from Teknaf Sadar.



[Enlarged view of all maps.](#)

Key Advisories

Based on the identified high-risk landslide areas, it is strongly advised that people exercise caution and take necessary precautionary safety measures when visiting these locations. Residents living in the high-risk landslide zones should avoid unnecessary activities on hills and hill slopes and take appropriate safety precautions.

The ISCG is also referring to the [Guidebook for Multi-Hazard Risk Communication and Community Engagement in Camp Settlement](#) which has been approved by the RRRC. This guidebook is being widely disseminated for the Rohingya refugee camps.

Additionally, for audiovisual materials on landslide preparedness and response, please refer to the [Cyclone preparedness and response - CWC materials](#) provided by BBC Media Action.

Considering the vulnerabilities of the Rohingya communities, the ISCG EPR Unit is suggesting the Sectors and EPR WG members to engage with preparedness actions, primarily closely collaborating with the Sector Lead Agencies, and camp DMCs.