

2024 JOINT RESPONSE PLAN ROHINGYA HUMANITARIAN CRISIS

JANUARY - DECEMBER 2024

KEY FIGURES 2024

1.55M PEOPLE IN NEED

50.7% Women & Girls  49.3% Men & Boys

Host communities
544k



Rohingya refugees/FDMNs*
1M

*Forcibly Displaced Myanmar Nationals

1.35M PEOPLE TARGETED

51.8% Women & Girls  48.2% Men & Boys

Host communities
346k



Rohingya refugees/FDMNs
1M

USD 852.4M TOTAL REQUIREMENTS



**This includes 56 appealing partners and 94 implementing partners (of the appealing partners, 33 are implementing activities under other projects).



Strategic Objective 1

Work towards the sustainable and voluntary repatriation of Rohingya refugees/FDMNs to Myanmar.

Facilitate early, voluntary, and sustainable repatriation and reintegration of the Rohingya refugees/FDMNs to Myanmar, and towards that, provide learning opportunities as well as build their portable skills and capacities in sectors available in Rakhine State in Myanmar and following the Skill Development Framework.



Strategic Objective 2

Strengthen the protection of Rohingya refugee/FDMN women, men, girls, and boys.

In close cooperation with the Government of Bangladesh and affected populations, protect individuals and communities, and contribute to promote basic needs and well-being of Rohingya refugees/FDMNs.



Strategic Objective 3

Deliver life-saving assistance to populations in need.

Maintain and rationalize services and assistance to ensure equal access for affected populations in need of humanitarian assistance in Cox's Bazar and Bhasan Char. In close cooperation with the Government of Bangladesh and affected populations, enhance preparedness and contingency plans for disaster responses at the Upazila level.



Strategic Objective 4

Foster the well-being of host communities.

In close cooperation with the Government of Bangladesh and affected populations, and in the spirit of mitigating the effects of hosting a large number of Rohingyas on the host communities in Cox's Bazar District, facilitate equitable access to quality services for communities; strengthen public service infrastructure and delivery through system and capacity strengthening; support sustainable and improved livelihoods for host communities; and rehabilitate the environment and ecosystem.



Strategic Objective 5

Strengthen disaster risk management and combat the effects of climate change.

In coordination with the Government of Bangladesh, mitigate the adverse impacts on the environment exacerbated by the Rohingya exodus and their prolonged stay in Bangladesh. This will include efforts to restore ecosystems, promote reforestation, develop waste management plans, and strengthen disaster coordination mechanisms, promote the use of renewable and cleaner energy sources, avoidance of use of plastic materials, packaging and train Rohingya refugees/FDMNs and host communities to respond to the effects of climate change and disaster risks.

TARGETED POPULATION: ROHINGYA REFUGEES/FDMNS AND HOST COMMUNITY IN COX'S BAZAR



931,574

51.3% Women & Girls 48.7% Men & Boys

480,947 Children (<18 yrs)
234,614 girls
246,333 boys

413,995 Adults (18-59 yrs)
227,739 women
186,256 men

36,632 Elderly (60+ yrs)
15,915 women
20,717 men



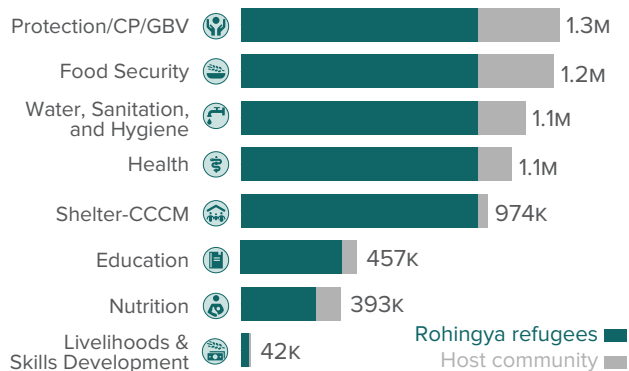
345,972

53.1% Women & Girls 46.9% Men & Boys

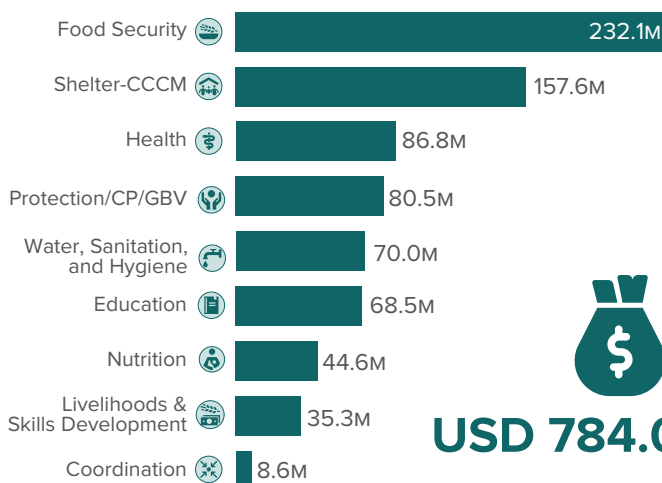
181,877 Children (<18 yrs)
92,234 girls
89,643 boys

149,078 Adults (18-59 yrs)
84,651 women
64,426 men

15,018 Elderly (60+ yrs)
6,901 women
8,117 men



BREAKDOWN OF PRIORITIZED NEEDS (COX'S BAZAR)



USD 784.0M

TARGETED POPULATION: ROHINGYA REFUGEES/FDMNS ON BHASAN CHAR*



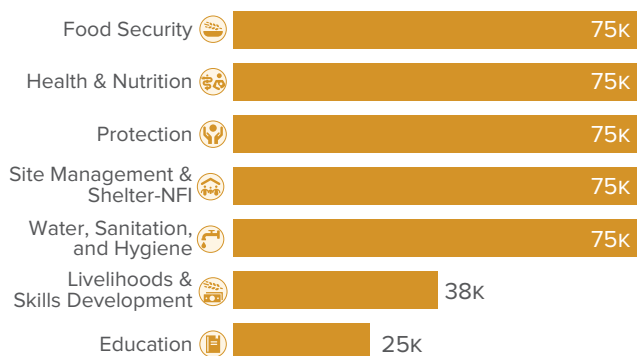
75,000**

51.3% Women & Girls 48.7% Men & Boys

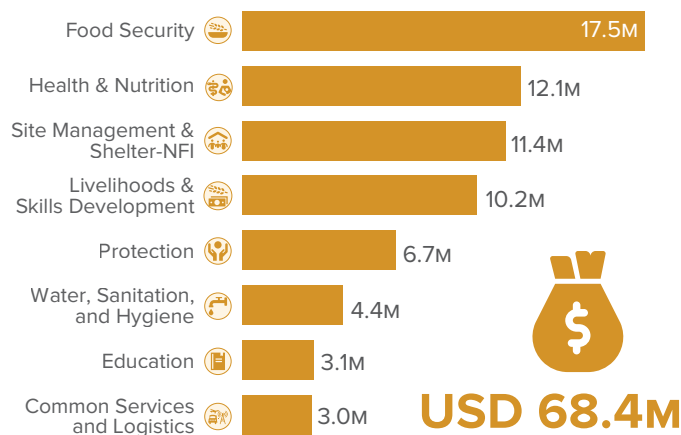
42,165 Children (<18 yrs)
20,863 girls
21,302 boys

31,257 Adults (18-59 yrs)
16,954 women
14,303 men

1,578 Elderly (60+ yrs)
635 women
943 men



BREAKDOWN OF PRIORITIZED NEEDS (BHASAN CHAR)



USD 68.4M

2024 JOINT RESPONSE PLAN APPEALING PARTNERS

AAB, ACF, ACLAB, ACTED, AMAN, BDRCS, BRAC, CARE, Caritas, CBMG, CWW, DRC, EDAS, Educo, FAO, FIVDB, Friendship, GH, GK, GUSS, HAEFA, HEKS, HFHI, HI, HSI, IMPACT, IOM, IRC, IRW, JSUS, MedGlobal, Mukti, Nabolok, NRC, Oxfam, Plan, Prantic, Protyashi, Pulse, PWJ, QC, SCI, Shushilan, SW, TdH, UNDP, UNESCO, UNFPA, UNHCR, UNICEF, UN Women, Uttaran, WFP, WHH, WHO, WVI

* The Bhasan Char Response is led by the Government of Bangladesh, with the support of UNHCR on behalf of the broader humanitarian community. It is coordinated separately from the Sectors in Cox's Bazar.

** The Government of Bangladesh plans on relocating a total of 100,000 Rohingya refugees/FDMNs to Bhasan Char by the end of 2024. This JRP is appealing to support 75,000 Rohingya refugees/FDMNs on the island. Adjustments to the appeal will be made, if required, based on the actual number of Rohingya refugees/FDMNs on Bhasan Char.