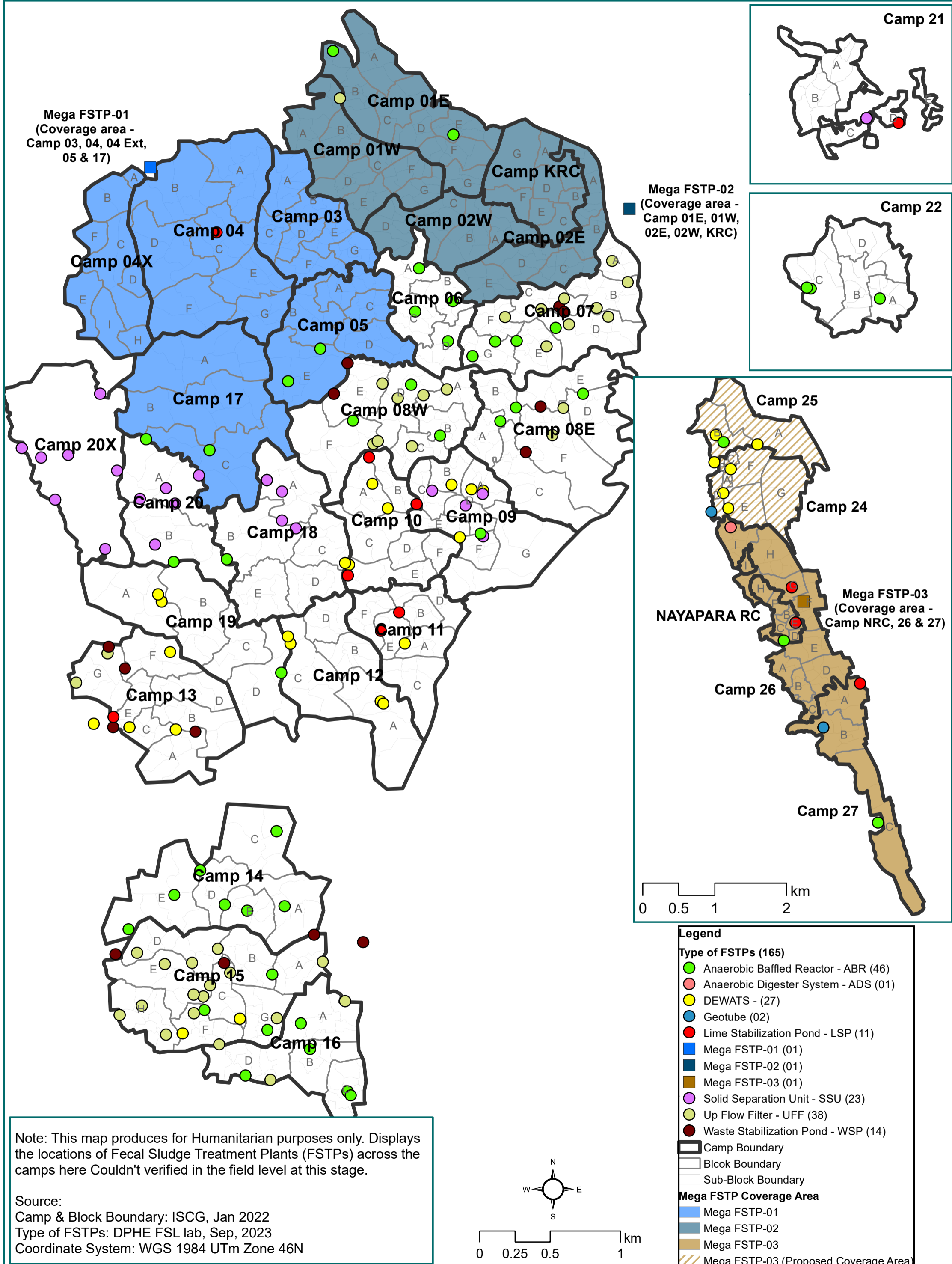


WASH Infrastructure: Fecal Sludge Treatment Plant (FSTP) Location Map (Updated February 11, 2024)



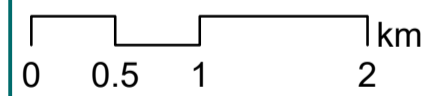
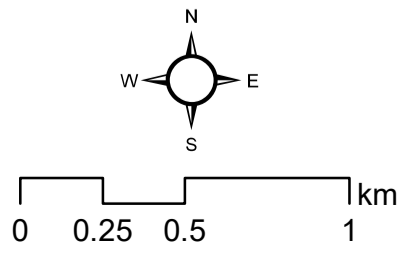
Mega FSTP-01
(Coverage area -
Camp 03, 04, 04 Ext,
05 & 17)

Mega FSTP-02
(Coverage area -
Camp 01E, 01W,
02E, 02W, KRC)

Mega FSTP-03
(Coverage area -
Camp NRC, 26 & 27)

Note: This map produces for Humanitarian purposes only. Displays the locations of Fecal Sludge Treatment Plants (FSTPs) across the camps here Couldn't verified in the field level at this stage.

Source:
Camp & Block Boundary: ISCG, Jan 2022
Type of FSTPs: DPHE FSL lab, Sep, 2023
Coordinate System: WGS 1984 UTM Zone 46N



- Legend**
- Type of FSTPs (165)**
- Anaerobic Baffled Reactor - ABR (46)
 - Anaerobic Digester System - ADS (01)
 - DEWATS - (27)
 - Geotube (02)
 - Lime Stabilization Pond - LSP (11)
 - Mega FSTP-01 (01)
 - Mega FSTP-02 (01)
 - Mega FSTP-03 (01)
 - Solid Separation Unit - SSU (23)
 - Up Flow Filter - UFF (38)
 - Waste Stabilization Pond - WSP (14)
- ▬ Camp Boundary
▬ Block Boundary
▬ Sub-Block Boundary
- Mega FSTP Coverage Area**
- Mega FSTP-01
 - Mega FSTP-02
 - Mega FSTP-03
 - ▨ Mega FSTP-03 (Proposed Coverage Area)