

**1 Kutupalong RC & Camps**  
(25 Programme partners, 44 Implementing partners)

UNHCR-CODEC, UNICEF-BRAC, PIB-BITA, UNHCR-RI, UNHCR-TdH, SCI, SW-BRAC, Caritas, UNICEF-COAST, UNICEF-CODEC, DRC, UNICEF-DSS, UNICEF-GNBD, IOM, IRC, SCI-BITA, SW-TdH, Educo-SKUS, WVI

CARE, DCA, CBM-CDD, Diakonie Katastrophenhilfe, DCA-BNKS, Caritas, DRC, Educo-SKUS, Friendship, IOM-Pulse, IOM, IRC, IRC-Pratyashi, Muslim Hands International, OXFAM, Plan Int.-SKUS, Prantic, SCI, UNHCR-SCI, UNFPA-AAB, UNFPA-BRAC, UNFPA-Mukti CXB, UNFPA-IRC, UNFPA-GUK, UNFPA-Plan Int., UNFPA-DCA, UNHCR-RTMI, UNHCR-RI, UNHCR-BRAC, WVI

HI, HI-CDD, HelpAge-YPSA, HelpAge-RIC, IRC, NRC, OXFAM, Caritas, UNHCR-NGOF, UNHCR-AAB, UNHCR-BRAC, UNHCR-ACTED, UNHCR-BLAST, UNHCR, IOM-YPSA, IOM-BNWL, IOM

**2 Camp 21 (Chakmarkul)**  
(8 Programme Partners, 11 Implementing Partners)

PIB-FIVDB, PIB-YPSA, SCI, SW-BRAC, UNICEF-DSS

CBM-CDD, DCA, UNHCR-BRAC, UNHCR-RTMI, UNHCR-SCI

HI, IRC, NRC, UNHCR, UNHCR-AAB, UNHCR-BLAST, UNHCR-BRAC

**3 Camp 22 (Unchiprang)**  
(10 Programme partners, 14 Implementing partners)

PIB-FIVDB, SCI, SW-BRAC, UNHCR-CODEC, UNICEF-BRAC, UNICEF-DSS

CBM-CDD, IRC, OXFAM, UNFPA-DCA, UNFPA-GUK, UNFPA-IRC, UNFPA-Mukti CXB, UNFPA-Plan Int.

HI, NRC, OXFAM, UNHCR, UNHCR-BRAC

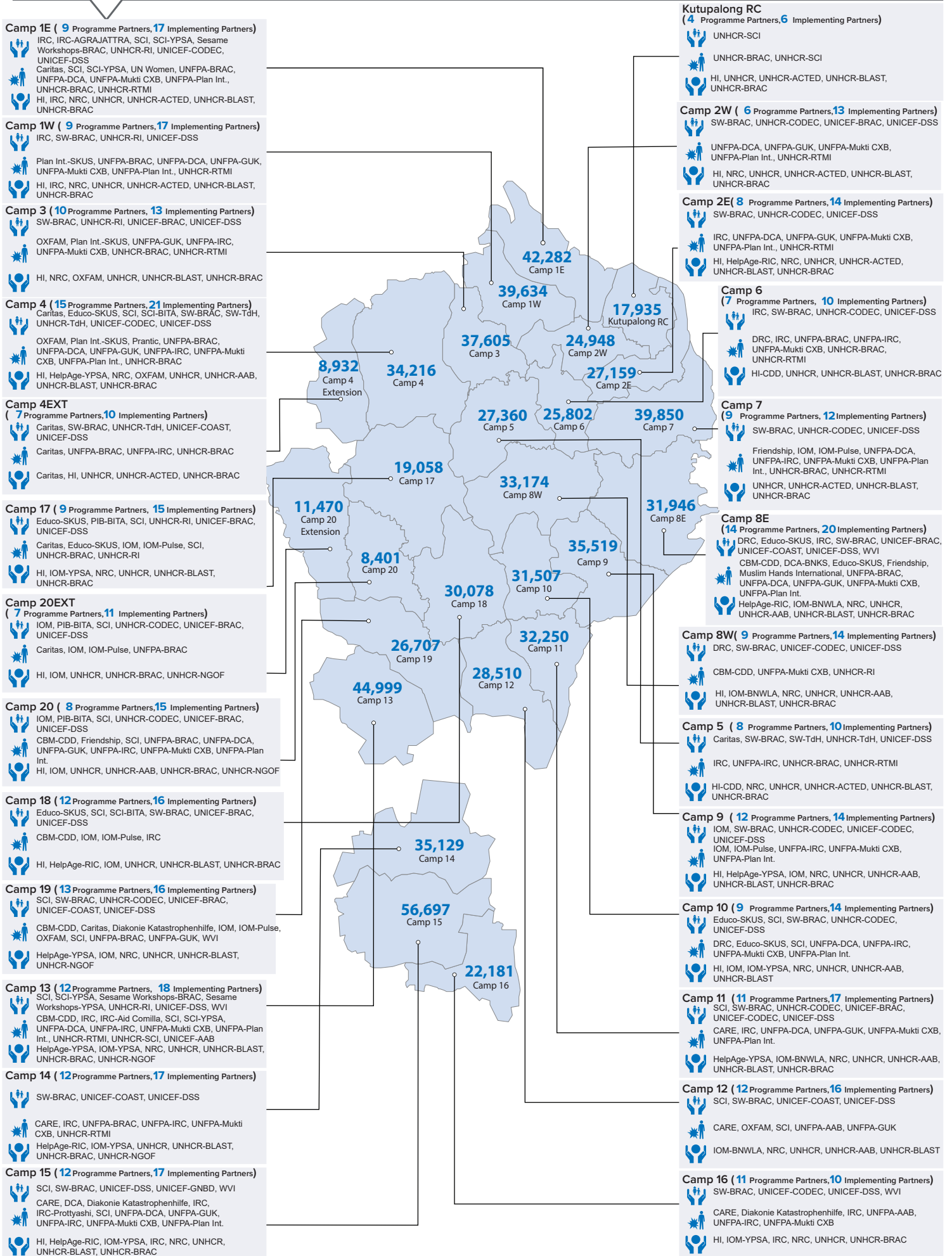
**4 Nayapara RC & Camps 24, 25, 26 and 27**  
(14 Programme partners, 23 Implementing partners)

UNHCR-CODEC, TdH-AGRAJATTRA, ASD, UNHCR-RI, SCI, UNICEF-BRAC, SW-BRAC, UNICEF-CODEC, UNICEF-DSS, PIB-FIVDB, IRC, SW-RI, PIB-YPSA

Friendship, IOM-Pulse, IOM, IRC, SCI, UNHCR-SCI, UNFPA-Mukti CXB, UNFPA-IRC, UNFPA-GUK, UNFPA-Plan Int., UNFPA-DCA, UNHCR-RTMI, UNHCR-RI, UNICEF-BRAC

HI, IRC, NRC, UNHCR-AAB, UNHCR-BRAC, UNHCR, UNHCR-BLAST, IOM-BNWL, IOM





Information in this report is based on protection partner 5W reporting as of August 2023. Numbers in the map represent refugee population per camp as of August 2023.