

2022 JOINT RESPONSE PLAN ROHINGYA HUMANITARIAN CRISIS

JANUARY - DECEMBER 2022

KEY FIGURES 2022

1.46M PEOPLE IN NEED AND TARGETED

49.1%
Men & Boys



50.9%
Women & Girls

Host communities
541K



Rohingya refugees/FDMNs
919K*

*Rohingya refugees/Forcibly Displaced Myanmar Nationals (FDMN) registered under the joint Government-UNHCR registration exercise as of 31 December 2021. This figure does not include a number of persons who are in the process of registration or expected to be registered in 2022, including a number of newborns, who were not able to be registered in 2021 due to the COVID-19 pandemic.

\$881M TOTAL REQUIREMENTS



10
UN agencies

52
International NGOs

74
Bangladeshi NGOs

*This includes 61 appealing partners and 75 implementing partners with 49 partners having the status of both appealing and implementing partners.



Strategic Objective 1

Work towards the sustainable repatriation of Rohingya refugees/FDMNs to Myanmar.

Support Rohingya refugees/FDMNs to build skills and capacities commensurate with livelihood opportunities available in Rakhine State, with a view to facilitating their early voluntary and sustainable repatriation and reintegration in Myanmar society.



Strategic Objective 2

Strengthen the protection of Rohingya refugee/FDMN women, men, girls, and boys.

In close cooperation with the Government of Bangladesh and affected populations, protect individuals and communities, and contribute to an enabling environment respectful of basic rights and well-being of Rohingya refugees/FDMNs.



Strategic Objective 3

Deliver life-saving assistance to populations in need.

Maintain and rationalize services and assistance to ensure equal access for affected populations in need of humanitarian assistance. In close cooperation with the Government of Bangladesh and affected populations, enhance preparedness and contingency plans for disaster responses at the Upazila level.



Strategic Objective 4

Foster the well-being of host communities in Ukhiya and Teknaf Upazilas.

In close cooperation with the Government of Bangladesh and affected populations, and in the spirit of mitigating the effects of hosting a large number of Rohingya on the host communities in Ukhiya and Teknaf, facilitate equitable access to quality services for communities; mitigate potential tensions between the Rohingya and the host communities; strengthen public service infrastructure and delivery through system and capacity strengthening; support sustainable livelihoods for host communities; and rehabilitate the environment and ecosystem.



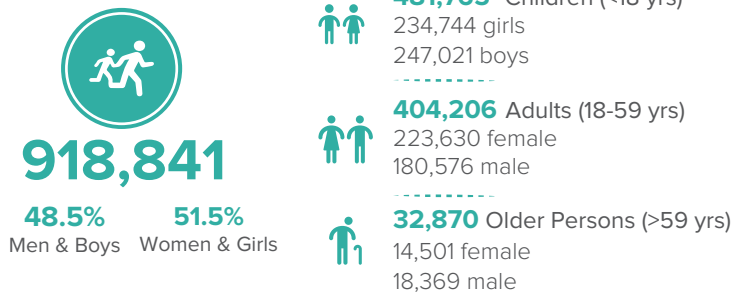
Strategic Objective 5

Strengthen disaster risk management and combat the effects of climate change.

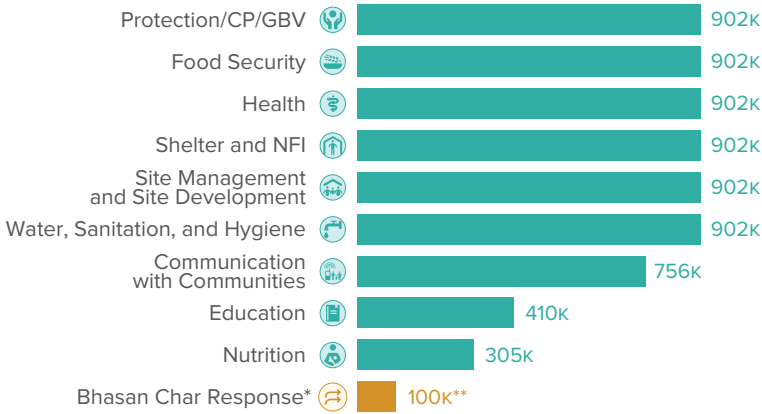
In coordination with the Government of Bangladesh, mitigate the adverse impacts on the environment exacerbated by the Rohingya exodus and their prolonged stay in Bangladesh. This will include efforts to restore ecosystems, promote reforestation, develop waste management plans, and may also require efforts to strengthen disaster coordination mechanisms, promote the use of renewable and cleaner energy sources, and train Rohingya refugees/FDMNs and Bangladeshi first responders to respond to the effects of climate change and disaster risks.

2022 JOINT RESPONSE PLAN OVERVIEW

TARGETED ROHINGYA REFUGEES/FDMNs

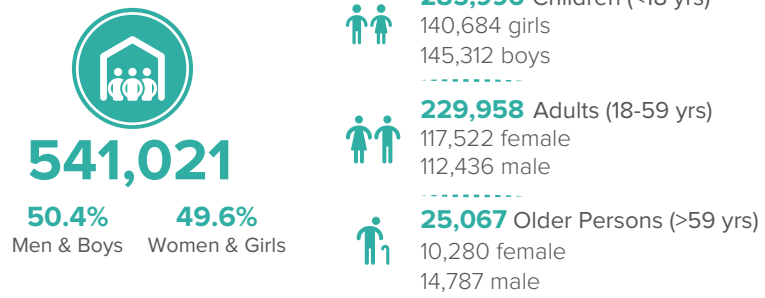


ROHINGYA REFUGEE/FDMN POPULATION TARGETED

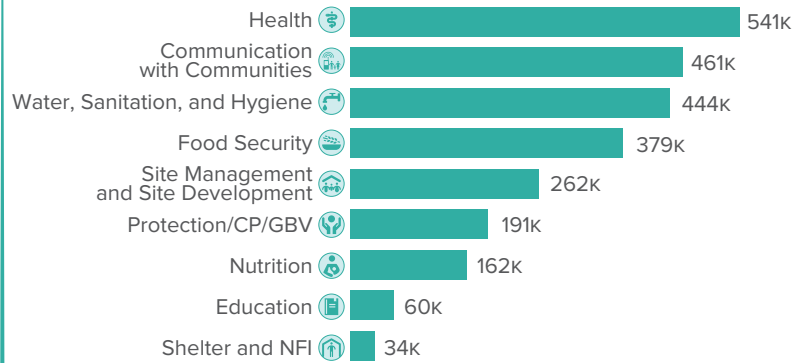


**Voluntary relocations to Bhasan Char will continue to be organized by the Government of Bangladesh, reaching up to 100,000 Rohingya refugees/FDMNs on Bhasan Char by the end of 2022.

TARGETED HOST COMMUNITY IN UKHIYA AND TEKNAF

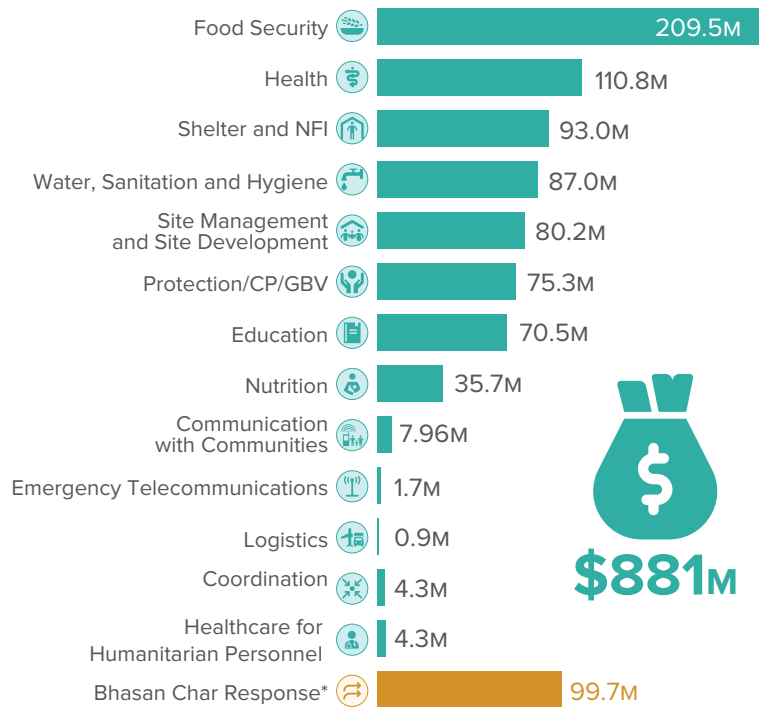


BANGLADESHI HOST COMMUNITY POPULATION TARGETED



Targeted host community population lives in 10 Unions and 1 Municipality of Ukhiya and Teknaf Upazila, St. Martin Union is not included

BREAKDOWN OF PRIORITIZED NEEDS

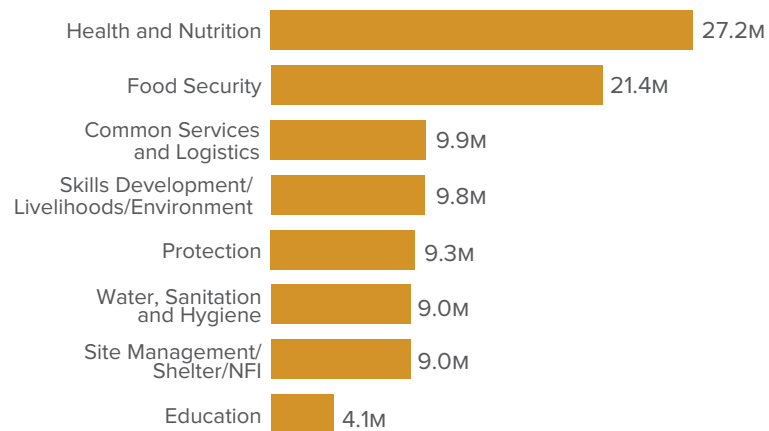


*The Bhasan Char Response is led by the Government of Bangladesh, with the support of UNHCR on behalf of the broader humanitarian community. It is coordinated separately from the Sectors in Cox's Bazar.

BHASAN CHAR RESPONSE KEY FIGURES



BREAKDOWN OF PRIORITIZED NEEDS (BHASAN CHAR)



**Voluntary relocations to Bhasan Char will continue to be organized by the Government of Bangladesh, reaching up to 100,000 Rohingya refugees/FDMNs on Bhasan Char by the end of 2022.

2022 JOINT RESPONSE PLAN APPEALING PARTNERS

ACF, Agrajattra, AMAN, BRAC, CAID, CARE, Caritas, CBM, COAST, COTE, CWW, DCA, DRC, Educo, FAO, FIVDB, GH, GlobalOne, GUSS, HAEFA, HEKS, HelpAge, Helvetas, HI, HMBD, HOPE, ICCO, IOM, IRC, IVY, MdM, MG, MM, MSI, Mukti, Nabolok, NGOF, NRC, Oxfam, PARC, Plan, Prantic, PWJ, RPN, SCI, SI, SKUS, TdH, Tearfund, UN WOMEN, UNDP, UNESCO, UNFPA, UNHCR, UNICEF, VSO, WFP, WHH, WHO, WVI, YPSA