

# CYCLONE MOCHA FLASH APPEAL

## BANGLADESH

MAY - DECEMBER 2023

**779,535** PEOPLE TARGETED

Bangladeshi communities

243k



Rohingya refugees

536k

**USD 42.16m** TOTAL REQUIREMENTS

### TARGETED POPULATION: ROHINGYA REFUGEES AND HOST COMMUNITY IN UKHIYA AND TEKNAF (Rohingya Refugee Response)



**536,124**

55.2% 44.8%

Women & girls Men & boys



**192,890**

49.6% 50.4%

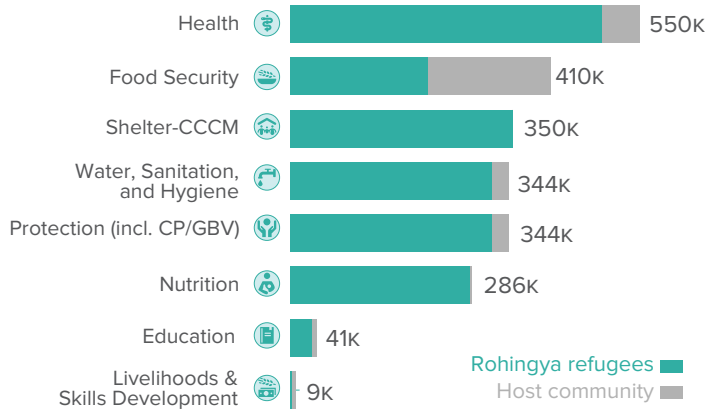
Women & girls Men & boys

**300,924** Children (<18 yrs)  
168,624 girls  
132,300 boys

**98,468** Children (<18 yrs)  
48,056 girls  
50,412 boys

**235,200** Adults (18+ yrs)  
127,400 female  
107,800 male

**94,422** Adults (18+ yrs)  
47,700 female  
46,722 male



### TARGETED POPULATION: BANGLADESHI COMMUNITIES IN TEKNAF (Humanitarian Country Task Team - HCTT)



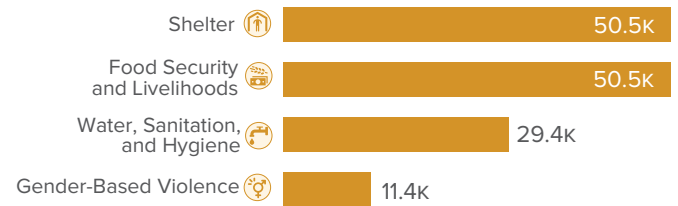
**50,521**

50.0% 50.0%

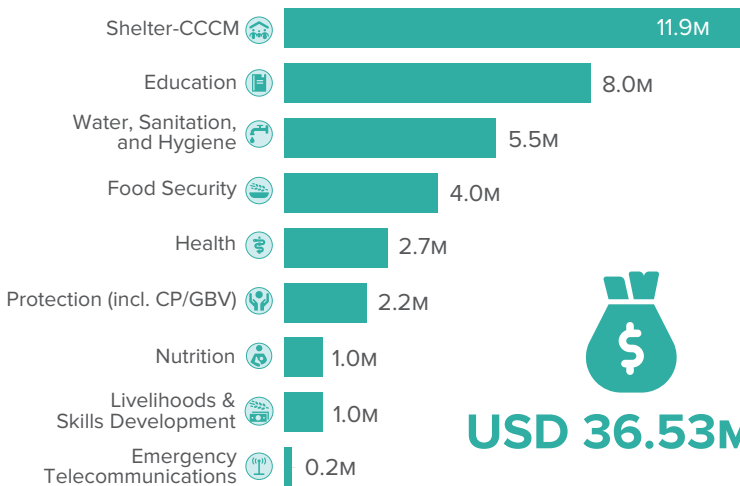
Women & girls Men & boys

**29,495** Children (<18 yrs)  
14,604 girls  
14,891 boys

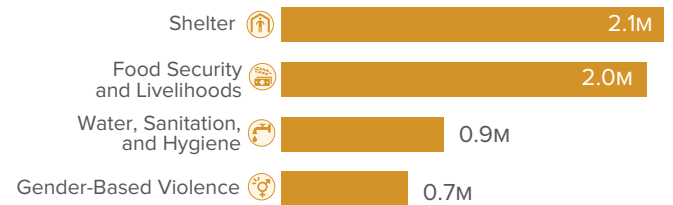
**21,026** Adults (18+ yrs)  
10,621 female  
10,405 male



### PRIORITIZED FUNDING NEEDS (Rohingya Refugee Response)



### PRIORITIZED FUNDING NEEDS (HCTT)



### CYCLONE MOCHA APPEALING PARTNERS

AAB, ACF, Arannayk, BDRCS, BRAC, CAID, CARE, Caritas, CWW, DAE, DF, DLS, DoF, DRC, DSK, ESDO, FAO, Fia, IFRC, IOM, IRB, IRC, NGOF, NRC, Oxfam, Plan, SC, TdH, UNDP, UNFPA, UNHCR, UNICEF, UN Women, WFP, WHO, WVI